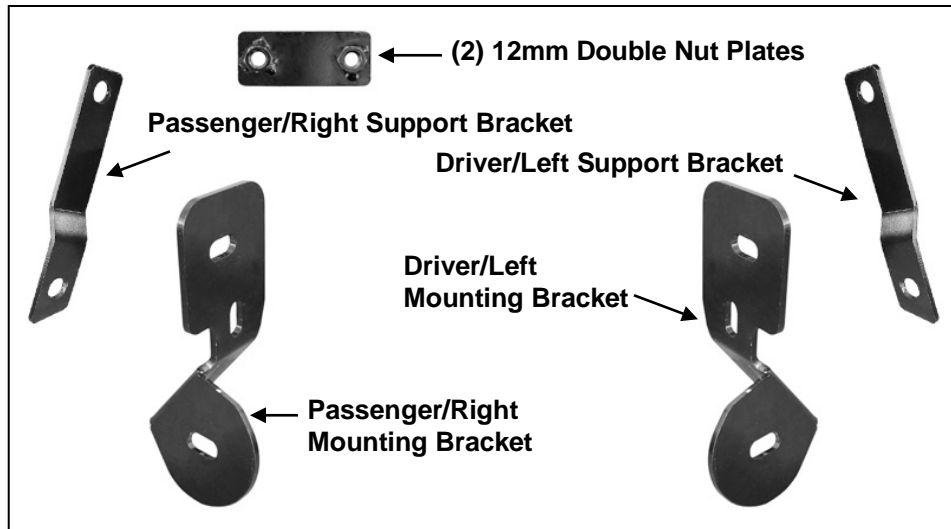


Installation Instructions for Barricade 3" Bull Bar (10-14 Wrangler JK)



PARTS LIST:

1	3" Bull Bar	2	12-1.75 x 40mm Hex bolts
1	Driver/Left Mounting Bracket	2	12-1.75 x 25mm Hex Bolts
1	Passenger/Right Mounting Bracket	4	12mm x 32mm OD x 3mm Flat Washers
1	Driver/Left Support Bracket	4	12mm Lock Washers
1	Passenger/Right Support Bracket	2	10-1.5mm x 25mm Hex bolts
2	12mm Double Nut plates	4	10mm x 24mm x 2.2mm Flat Washers
2	1/2" x 2" Hex Bolts	2	10mm Lock Washers
2	1/2" Lock Washers	2	10mm Hex Nuts
2	1/2" x 1-1/2" OD x 1/8" Large Flat Washers		



PROCEDURE:

- REMOVE CONTENTS FROM BOX. VERIFY ALL PARTS ARE PRESENT. READ INSTRUCTIONS CAREFULLY. CUTTING IS REQUIRED.**
- Remove the plastic splash guard, **(Figure 1)**, from under the front bumper and place it on a clean, stable work surface.
- Starting on the driver side, insert (1) 12mm Double Nut Plate, **(Figure 2A)**, into the opening in the end of the frame crossmember, **(Figure 2B)**. Line up the lower threaded hole in the Nut Plate with the lower hole in the frame. Select the driver side Mounting Bracket. Bolt the Mounting Bracket to the side of the crossmember with (1) 12mm x 25mm Hex Bolt, (1) 12mm Flat Washer and (1) 12mm Lock Washer inserted through the lower hole in the Bracket, crossmember and into the Double Nut Plate, **(Figure 3)**. Leave hardware loose at this time.
- Next, select the driver side Support Bracket, **(Figure 4A)**. Bolt the Support Bracket to the upper hole in the Mounting Bracket with (1) 12mm x 40mm Hex Bolt, (1) 12mm Flat Washer and (1) 12mm Lock Washer inserted through the Support Bracket, the upper hole in the Mounting Bracket, crossmember and into the upper hole in the Nut Plate, **(Figure 4B)**. Snug but do not tighten the hardware at this time.
- Repeat **Steps 3 – 4** for passenger side Mounting Bracket installation.
- With help, position the Bull Bar up to the Mounting Brackets. Use the included (2) 1/2" x 2" Hex Bolts, (2) 1/2" Large Flat Washers and 1/2" Lock Washers to attach the Bull Bar to the Mounting brackets, **(Figure 5)**. Snug but do not tighten at this time.

7. Bolt the forward end of the Support Brackets onto the outside of the tabs on the Bull Bar with the included (2) 10mm x 25mm Hex Bolts, (2) 10mm Lock Washers, (4) 10mm Flat Washers and (2) 10mm Hex Nuts. Snug but do not tighten hardware at this time.
8. Align the Bull Bar properly and only tighten the Bracket hardware securing the Brackets to the frame at this time. Temporarily remove the Bull Bar.
9. Position the splash guard back up to the vehicle and attach with the factory hardware. Estimate the amount of cutting required to clear the Brackets and Bull Bar. Mark the location of the Mounting Brackets onto the back of the splash guard, **(Figures 6 & 7)**. **NOTE:** To maintain the integrity of the plastic Splash Guard, remove only material necessary to clear the Bull Bar and Brackets. Make small cuts and check the fit often before final installation. Reinstall the splash guard with factory hardware.
10. Reinstall the Bull Bar and tighten all hardware.
11. Do periodic inspections to the installation to make sure is secure and tight.

To protect your investment, wax this product after installing. Regular waxing is recommended to add a protective layer over the finish. Do not use any type of polish or wax that may contain abrasives that could damage the finish.

For stainless steel: Aluminum polish may be used to polish small scratches and scuffs on the finish. Mild soap may be used also to clean the Bull Bar.

For gloss black finishes: Mild soap may be used to clean the Bull Bar.

Driver Side Installation Pictured

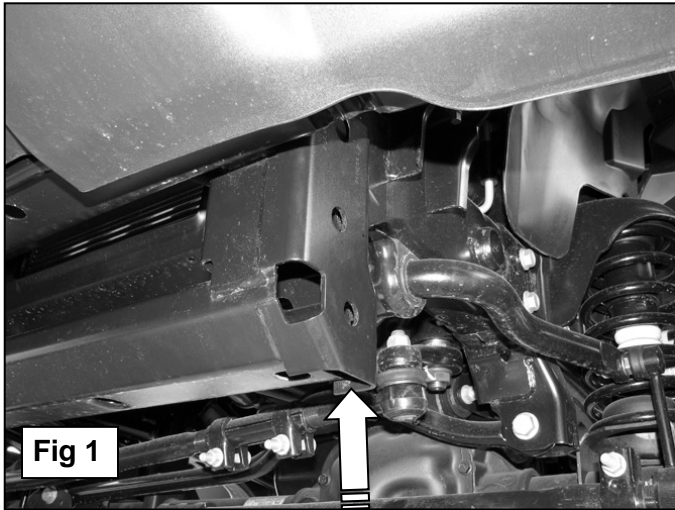


Fig 1

12mm x 25mm Hex Bolt
12mm Lock Washer
12mm Flat Washer

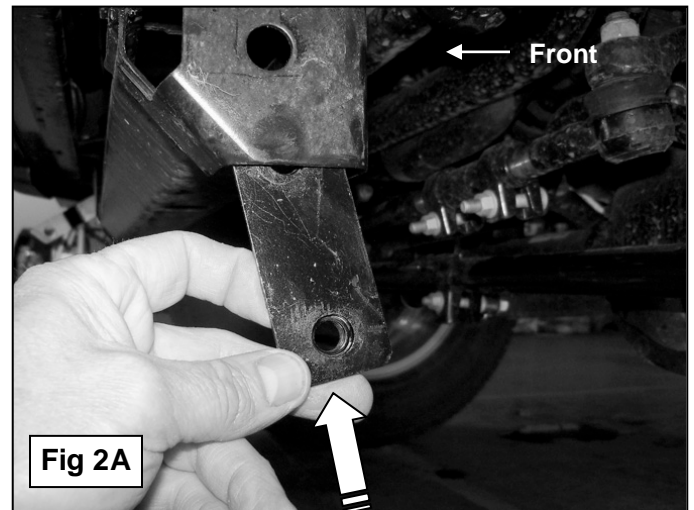


Fig 2A

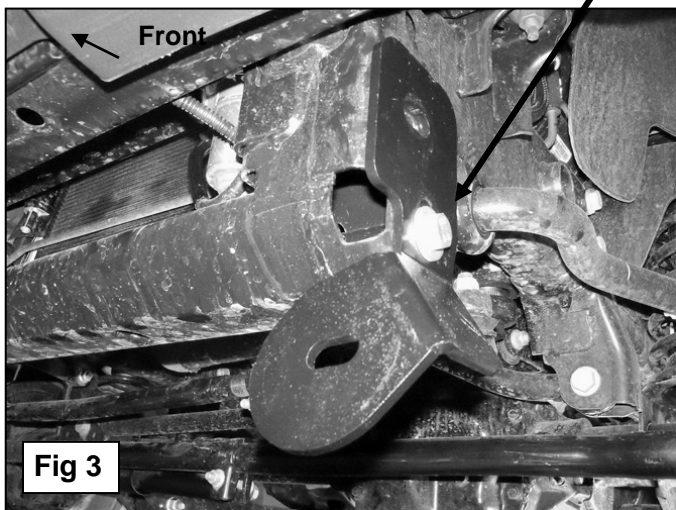


Fig 3

Insert the 12mm Double Nut Plate (2B) into the opening in the bottom of the end of the crossmember with the flat side against the crossmember (Fig 2A) and the hex nuts facing inward (Fig 2B)

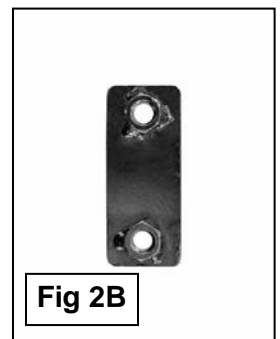


Fig 2B

Driver Side Installation Pictured

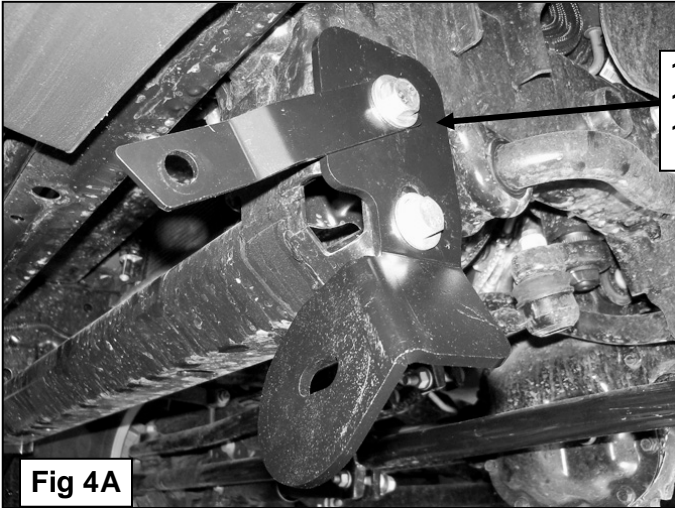


Fig 4A

12mm x 40mm Hex Bolt
12mm Lock Washer
12mm Flat Washer

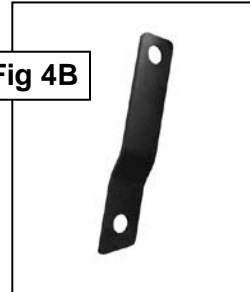


Fig 4B

(1) 10mm x 25mm Hex Bolt
(1) 10mm Lock Washer
(2) 10mm Flat Washers
(1) 10mm Hex Nut

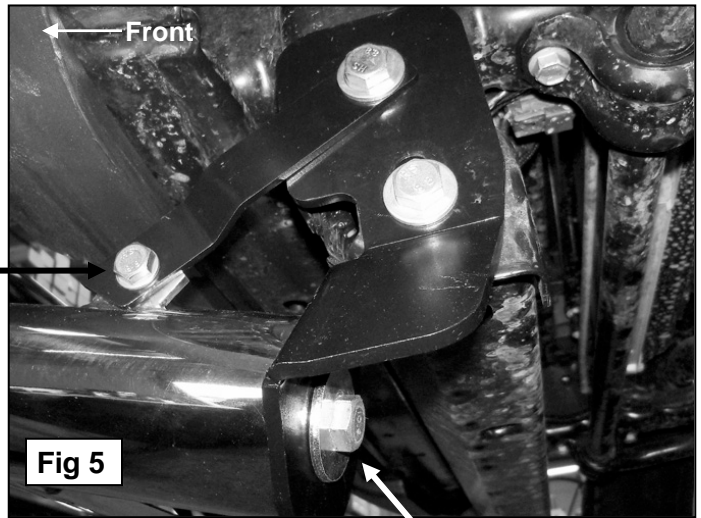


Fig 5

Front

1/2" x 2" Hex Bolt
1/2" Lock Washer
1/2" Large Flat Washer

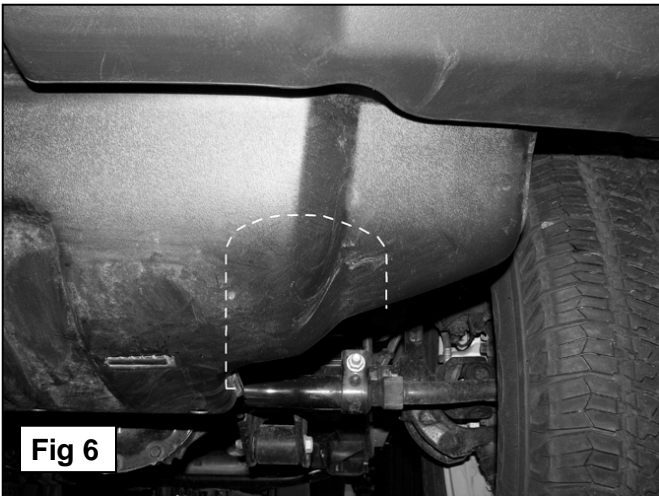


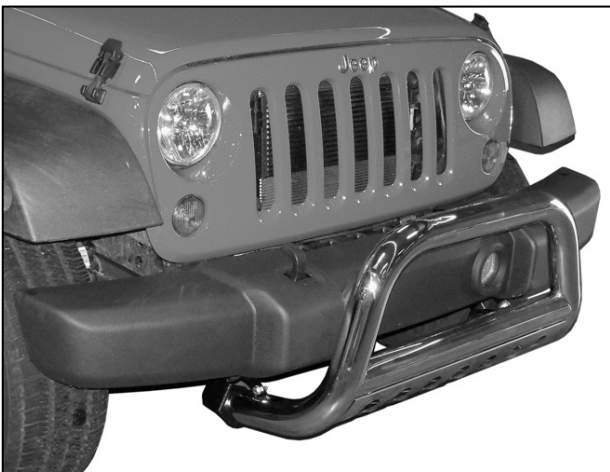
Fig 6

Cut two openings to clear the Mounting Brackets, Support Brackets and Bull Bar



Fig 7

Area to cut from splash guard illustrated for example only.



Installation Complete