

RedRock 4x4 Rock Crawler Rear Bumper w/Tire Carrier - Textured Black (87-06 Wrangler YJ & TJ)

Installation Time: 3+ Hours

Tools Required:

- ✓ Ratchet
- ✓ 18 mm Socket and Wrench
- ✓ 17 mm Socket and Wrench
- ✓ 16 mm Socket and Wrench
- ✓ 13 mm Socket and Wrench
- ✓ Drill
- ✓ 7/16 Drill Bit
- ✓ Ratchet Extensions
- ✓ Lug Nut Wrench and 1/2" Socket

Pre Installation Notes:

- *If your bolts are heavily rusted you may want to spray them down with penetrating fluid a day or so before you take off your old bumper and carrier.*
- *You do not need to drop the gas tank but it makes the installation much easier.*

Installation Instructions:

1. Remove your factory bumper so that you are left with an open area to begin the install.



2. Use the supplied drill template with the notch facing up, mark your holes for drilling. This only needs to be done on 1998 wrangler models if you do not already have holes in the marked spots. All of the other holes should line up already. If you already have the holes you can disregard steps two and three.
3. Using the template, drill two 7/16" holes on both sides of the frame. Note: Make sure you mark the center of the holes and line the template up as straight as possible, this will save time bolting it up.



4. Now you can mount the bumper to the frame using the four backing plates and the 3/8 bolts with lock washers and washers on each bolt. Do not tighten the bolts just yet, leave them loose. Do this with all four sets of holes, two on each side of the frame.



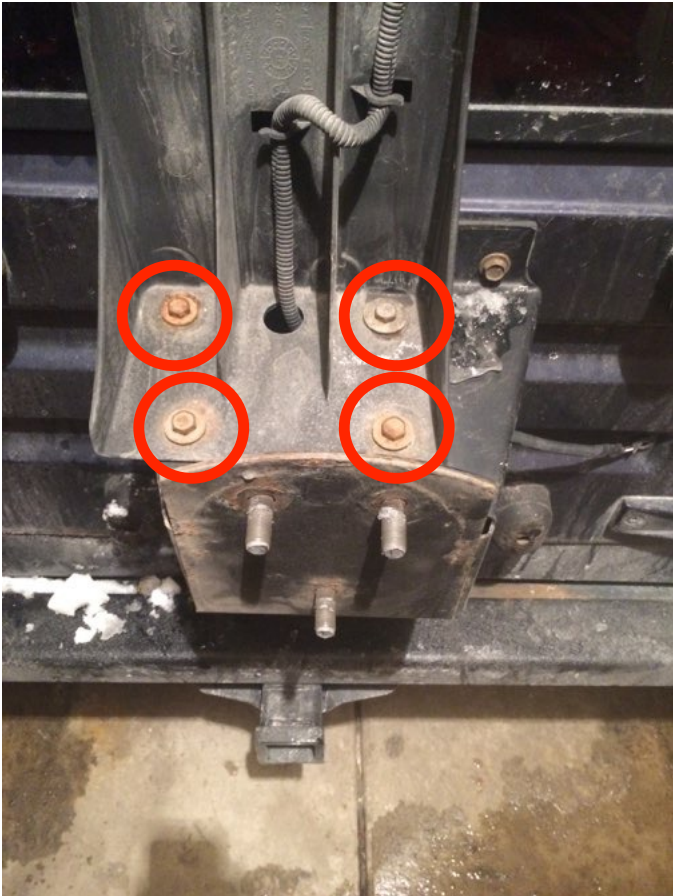
5. You can now take the two 7/16 bolts with a lock washer and a washer on each bolt. You may only use one hole. These bolts will bolt into the bottom of the frame, tighten these ones now. Once you get the bolts in you can snug up all of the other bolts on the bumper. The bumper install is completed and you can start with the carrier.



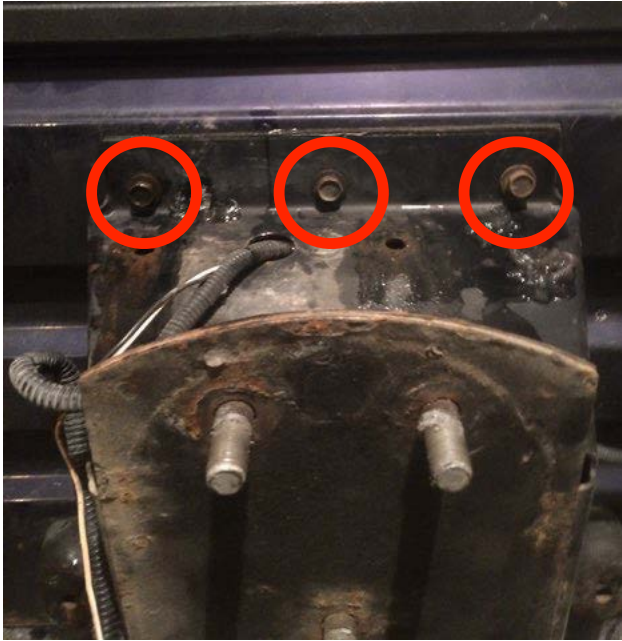


Finished Bumper

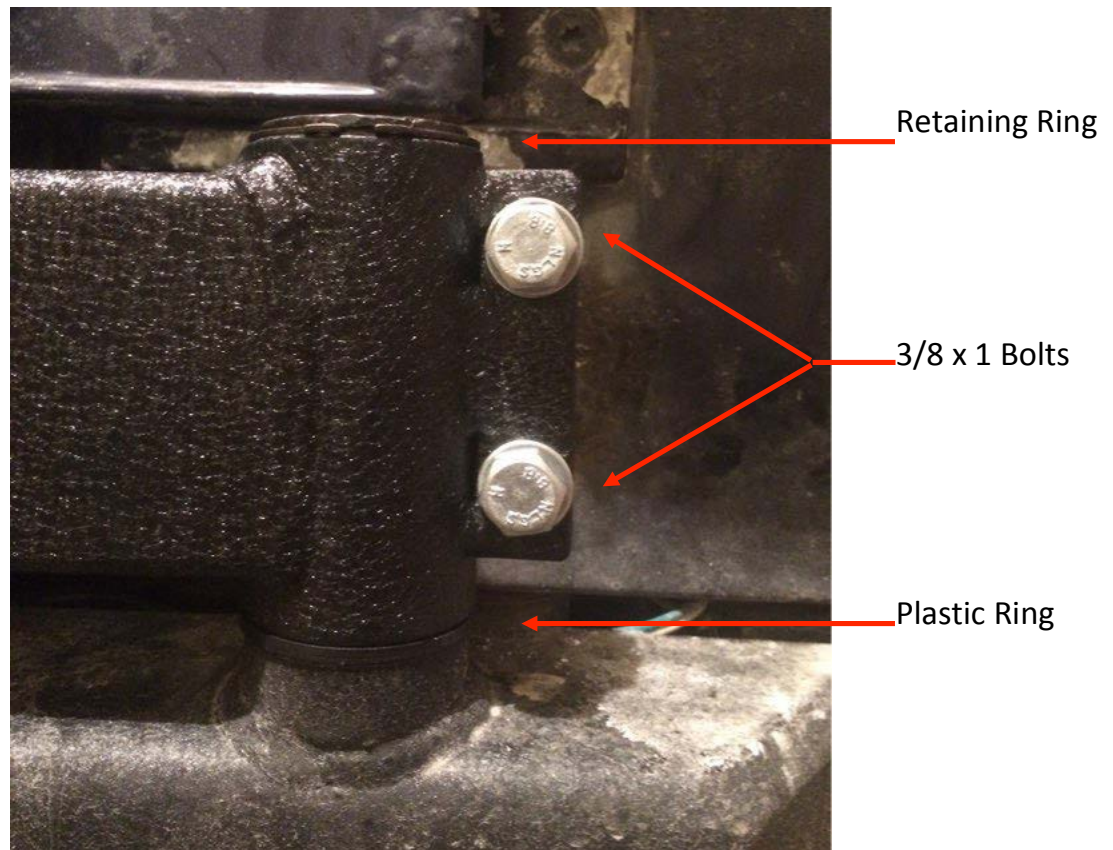
- 6. To start the installation with the tire carrier you must first take off your spare tire using a 1/2 lug nut wrench. Once the spare tire is off take off the stock third brake light. Remove the four 13 mm bolts on the top of the light bracket. (Left) You are now left with the picture on the right. Note: You will have to cut the brake light wires.



7. To remove the stock spare tire carrier you have three 13 mm bolts on the top of the carrier (Left) and two 13 mm bolts on the bottom (Right). Remove these five bolts and your tire carrier will come right off. Note: I put these bolts back in the tailgate so there wasn't any empty holes.



8. Now that you have all of the stock parts off you can get ready to put the Red Rock 4x4 tire carrier on your bumper. The first thing you have to do is put the plastic ring on the post for the tire carrier. Then you can take the tire carrier and slide it on the post. Latch the tire carrier onto the bumper and put two 3/8 x 1 bolts with washers and lock nuts through the two holes on the carrier. Tighten these bolts now. Once the bolts are tight you can put the retaining ring on the top of the post.



9. Put the tire support bar in the top of the carrier and secure with the supplied bolt washers and lock nut. Note: I left my support bar out until I get a full size spare tire.



10. Take the wheel adapter and slide it on top of the tire carrier section. There are two sets of wholes depending on your wheel and tire set up. Find the one that works best for you and tighten down the three 3/8 bolts with washers and nuts.



11. Bolt your spare tire onto your tire carrier and tighten the three lug nuts they give you with the kit. Your installation is now complete.



Extra Installation Notes:

- They supply you with another rubber bumper to put behind your carrier if you have any movement with your carrier and tire.
- The only design flaw I see after using the bumper is that the zirk fitting on the post for the tire carrier is too tall for my tailgate and I already sheared off the zirk fitting. This limits the tailgate from opening all of the way.
- They also supply you with a pin to secure the carrier so the latch cannot pick up by itself. The instructions do not say anything about this but the best place I have found for it is attached to the license plate screw.
- You will need to change your third brake light because with the carrier the stock one will not work.

Installation Instructions written by ExtremeTerrain Customer Joel Garofalo 01.11.2015