



## Barricade Extreme HD Rear Bumper w/ Tire Carrier Installation Instructions (07-15 Wrangler JK)

### Contents

- (1) - Bumper
- (1) - Tire Carrier w/ Hardware

### TOOLS REQUIRED

- 13mm-19mm Sockets
- 13mm-19mm Wrenches
- Allen Key Set (Metric)



**STEP 1** // Remove the rear tire and the (8) 13mm bolts holding the tire carrier to the tailgate.



**STEP 3** // Remove the (4) 15mm bolts securing the rear bumper.



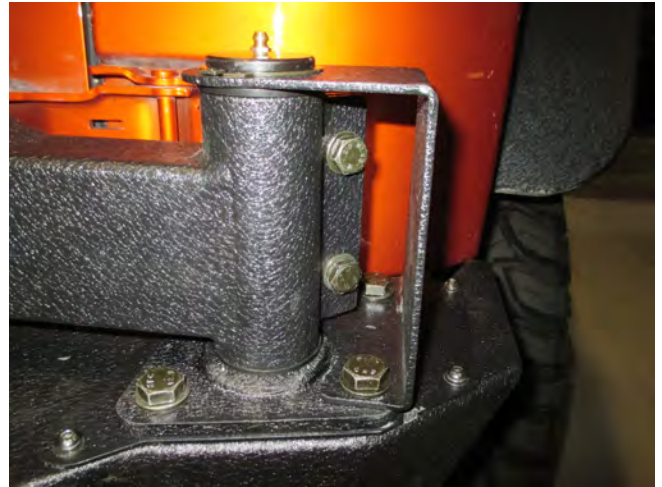
**STEP 2** // Disconnect the third brake light harness, which can be accessed through the rear panel of the tailgate.



**STEP 4** // Next, slide the L-shaped mounting brackets into the frame rails with the nut backing up to the predrilled hole in the frame.



**STEP 5 //** Slide new rear bumper into place, securing the bump but leaving the bolts loose.



**STEP 8 //** Attach supplied bumper plate with allen bolts, then slide the carrier hinge into the bumper. The side with the threaded bolt hole goes up.



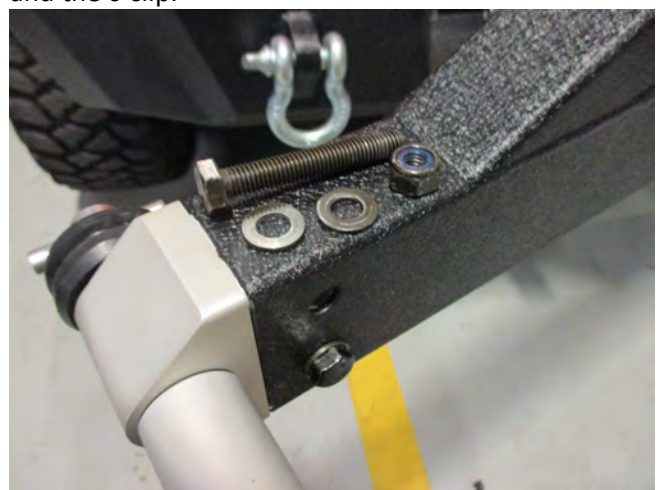
**STEP 6 //** Secure the backing plate, then tighten all bumper bolts that hold the bumper to the frame.



**STEP 9 //** Install carrier arm, first the plastic bushing, then the carrier arm, then another bushing, followed by the bracket to secure the carrier arm to the bracket and the c-clip.



**STEP 7 //** Attach the supplied bumper plate using the supplied allen bolts. Next, attach the latch bracket.



**STEP 10 //** Install the carrier latch.



**STEP 11 //** Install the carrier bump stops.



**STEP 14 //** Subtract a half inch from the previous measurement, and set the carrier to the new measurement. This insures the tire is against the carrier.



**STEP 12 //** Install the rear tire carrier and secure it to the rear swing arm at the desired height using the supplied hardware.



**STEP 15 //** Torque the spare tire lug nuts to the manufactures specified torque spec.



**STEP 13 //** Measure the backspacing of your wheel and tire by placing a straight edge across the tire. Measure from the mounting hub to the straight edge.