

Smittybilt Neoprene Seat Cover Set Front/Rear - Black

Installation Guide for Jeep Wrangler '13-'16 2-Door JK

Installation Time: 1 Hour

Tools Required:

- ✓ Box Cutter/Knife

Installation Instructions:

1. Carefully open the package using a box cutter or knife, make sure to not direct the blade downward into the box (Figure A).

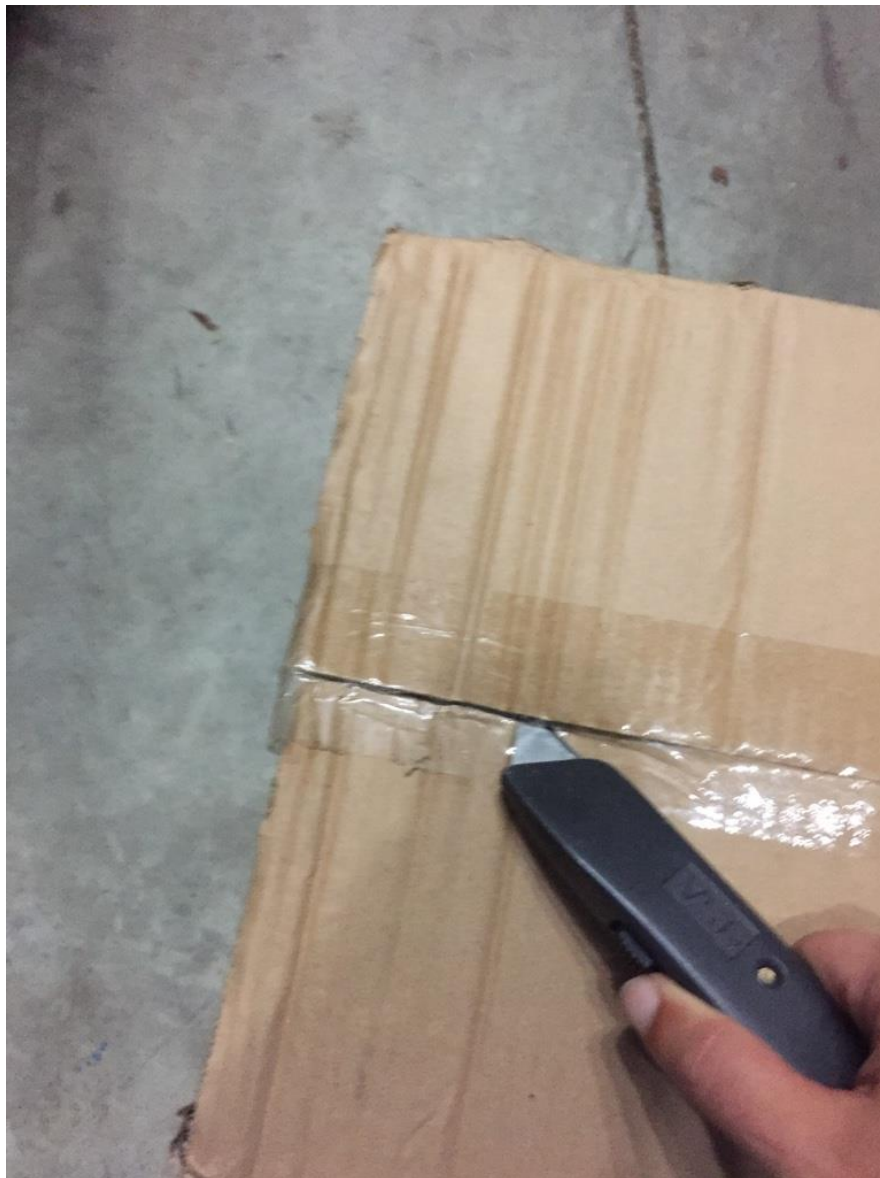


Figure A

2. Ensure that all covers, including headrests, are included (Figure B).



Figure B

3. Remove the front driver's side head rest by pinching in the release buttons and pulling upward on the head rest until both metal prongs are completely detached (Figure C).

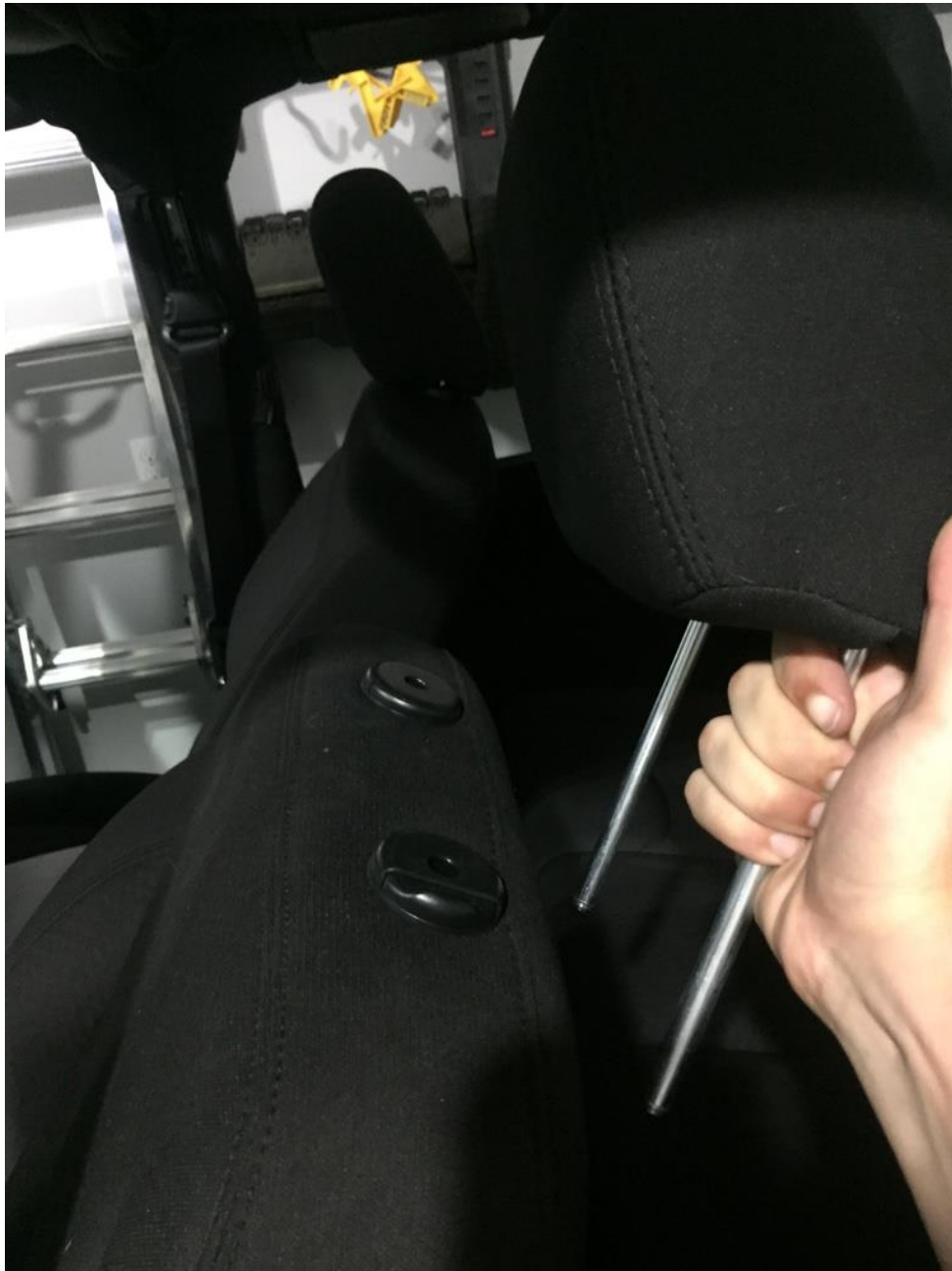


Figure C

4. Slide the neoprene cover over the body of the driver's seat until fully covered (Figure D). Push the Velcro end in between the back cushion and seat cushion and connect the Velcro behind the seat for a snug fit.



Figure D

5. Unclip the two buckles on the neoprene seat cover and slide the neoprene cover over the driver's seat (Figure E).



Figure E

6. Run the two buckles from the front of the seat cushion underneath the seat, avoiding seat hardware, and reattach clips that were inserted between the back cushion and seat cushion. Tighten after reattaching the clips.
7. Slide the neoprene cover over the driver's seat head rest that was removed (Figure F).



Figure F

8. Re-install the head rest by pinching the release buttons in and pushing the two prongs into the holes at the top of the body of the seat until completely re-installed (Figure G).



Figure G

9. Repeat steps 3 through 8 to install the neoprene seat covers on the passenger side.
10. Repeat steps 3 through 8 to install the neoprene seat covers on the rear seat.
11. *Note: When installing the neoprene covers on the rear seat, tumble the seat forward half-way in order to more easily work the extra fabric between the back and seat cushion (Figure H).*



Figure H



Before



After

Installation Instructions Written by ExtremeTerrain Customer J. Sandlin 07/06/2017