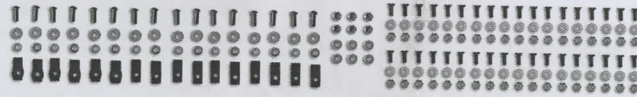
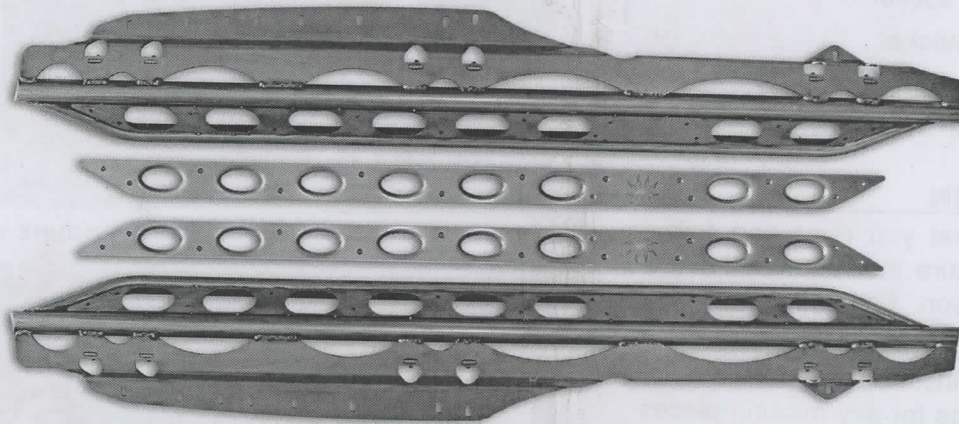


SF
2DR

POISON SPYDER C U S T O M S

JK ROCKER KNOCKERS INSTALLATION



Thank you for purchasing Poison Spyder Rocker Knockers for your Jeep JK. You now own the ultimate in rocker panel protection for your Jeep. If you purchased the Slider option, these have already been welded to the Rocker Knockers and install in the same manner, with the few exceptions noted in the instructions. Installation is fairly simple with the right tools and good mechanical abilities. If you are not confident in your mechanical skills, please seek the help of a professional to perform the installation. Please read through these entire instructions before proceeding with installation.

PARTS LIST

Please check your packages immediately upon arrival to ensure that everything listed is included, and to check for damage during shipping. If anything is missing or damaged, call Poison Spyder at (951) 849-5911 as soon as possible.

- (1) Driver side JK Rocker Klocker
- (1) Pass. side JK Rocker Klocker
- (16) 3/8-16X1 SS button head socket cap screw
- (16) 3/8 flat washer
- (16) 3/8 split lock washer
- (10) 3/8-16 U-nut clip "fat"
- (6) 3/8-16 U-nut clip "skinny"

- (12) 5/16-18 nylon insert lock nut
- (12) 5/16 flat washer

The following items are provided only for Rocker Knockers with Sliders, and vary by model:

- 2-DR 4-DR
- (22) (28) 1/4-20X3/4 SS flat head cap screw
- (22) (28) 1/4-20 nylon insert lock nut
- (22) (28) 1/4 flat washer

TOOLS NEEDED

- 1/2" open end wrench
- 7/16" open end wrench
- 7/32" hex key
- 5/32" hex key
- 1/2" drill motor
- 1/4" drill bit
- 7/16" drill bit
- 9/16" drill bit
- Anti-sieze compound
- Pneumatic or electric cut-off wheel, body saw or reciprocating saw (optional)
- Die grinder with 1/4" bit (optional)
- Touch-up paint (optional)
- Fine point felt tip marker
- Center punch

INSTALLATION INSTRUCTIONS

- Hammer
- Measuring tape
- 1/4" drive ratchet
- 10mm X 1/4" driver socket
- 13mm X 1/4" drive socket
- 7/16" X 1/4" drive socket
- 3" socket extension, 1/4" drive

BEFORE YOU BEGIN

- It is imperative that you read and follow instructions to ensure that you will have a successful installation. Failure to do so may result in an unsatisfactory installation.
- It is the purchaser/installer's responsibility to inspect the package for any missing pieces prior to beginning installation.
- Carefully read the product warranty and hold harmless agreement at the end of this document
- Read through instructions thoroughly before beginning installation.

INSTALL PREPARATION:

1. **Park vehicle on a level surface** and set the emergency brake. You will want to wear eye protection beyond this point in time.
2. **If your Wrangler is a Rubicon edition** or it is equipped with rocker protection or steps, they will now need to be removed. Factory installed rocker protection is held on by:
 - a. 2-DR: four (4) nuts in the pinch weld and two (2) bolts that go into the bottom of the tub.
 - b. 4-DR: six (6) nuts in the pinch weld and three (3) bolts that go into the bottom of the tub.

Using the 1/4" drive, 10mm socket and the 13mm socket remove the hardware that fastens the rocker protection to the Jeep. Do not discard the hardware as you will need it to reinstall the rockers. Remove the factory rocker protection from the Jeep by gently pulling it away from the tub. See figure 1, 2 and 3



FIGURE 1

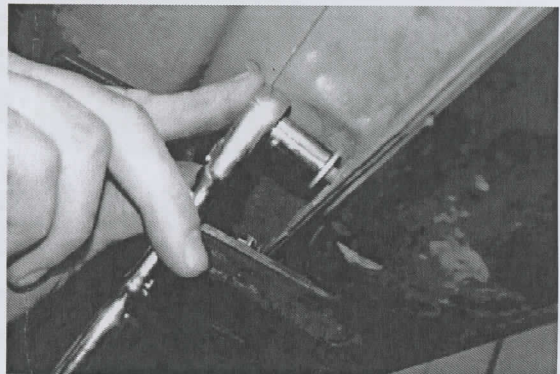


FIGURE 2

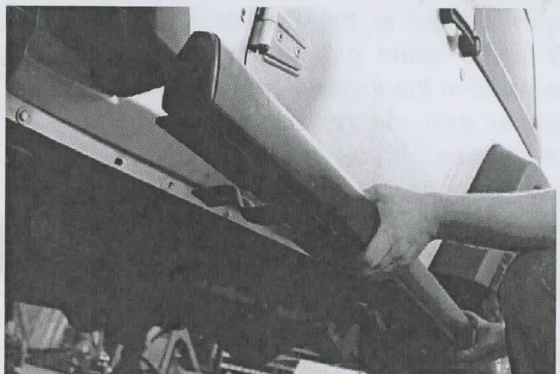


FIGURE 3

3. **Locate and remove the four (4) nut clips** that are located under the Jeep (two on each side). These are what the OEM bolts threaded into. On 4-door models the rear-most bolt threads directly into the tub. Do not attempt to remove this nut insert!

INSTALLATION PROCEDURE

1. **Starting with the drivers side**, use the 7/16" drill bit to open up the existing holes in the pinch weld flange as shown in figure 4. There are four (4) of these holes on a 2-door JK, and six (6) on a 4-door. Use caution when

INSTALLATION INSTRUCTIONS

drilling these holes—the material is thin and a bit this size can catch and distort the metal.

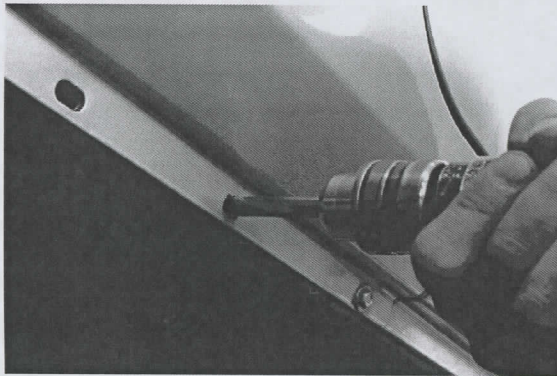


FIGURE 4

2. (2-door models only) Starting from the front of the Jeep, count backward to the fourth hole in the pinch weld flange.

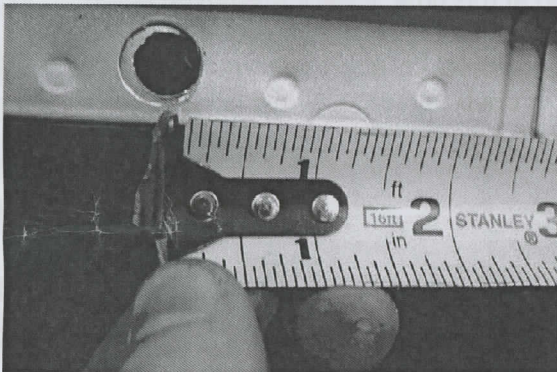


FIGURE 5

From the center line of the fourth hole, measure backward (toward the rear of the Jeep) 11-3/4" and mark a vertical line in the pinch weld flange.

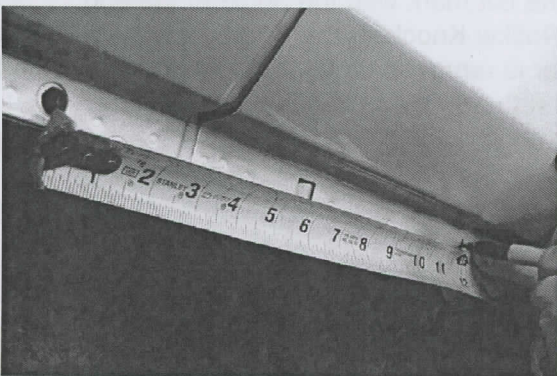


FIGURE 6

From this mark, measure another 4-5/16" toward the rear of the Jeep and make another mark in the pinch weld flange.

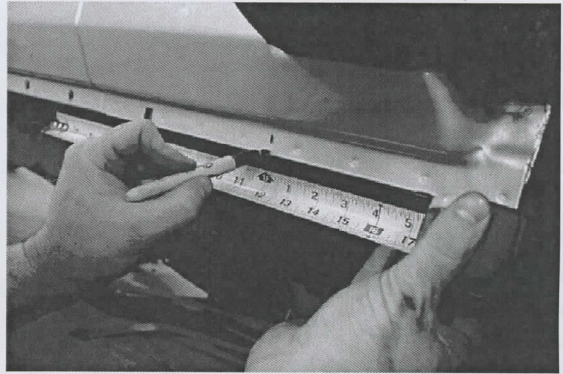


FIGURE 7

Next, measure from the bottom edge of the pinch weld flange, at each vertical mark, and make a horizontal mark 5/16" up from the bottom edge.

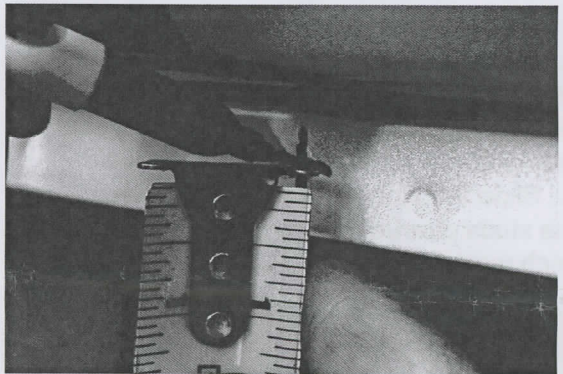


FIGURE 8

You should now have two cross-marks on the pinch weld flange.

3. (2-door models only) Center punch and drill two 1/4" holes through the pinch weld flange, one at each cross-mark made in the previous step.

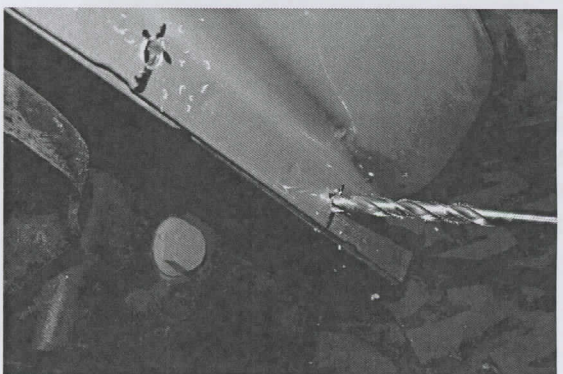


FIGURE 9

Use the 7/16" drill bit to open up the two holes. Use caution when drilling these holes as the material is very thin and a large drill bit

INSTALLATION INSTRUCTIONS

can catch and distort the metal.

5. (Optional) Use the die grinder to elongate the holes in the pinch weld about 1/16" toward the front and back. The holes should now have the appearance of an oval. This step will make it easier to install and remove the Rocker Knockers.
6. If you are installing Rocker Knockers with Sliders, remove the dimpled panel at this time and set aside. For this you will need your 7/16" socket, 3" extension and 1/4" drive ratchet, as well as a 5/32" hex key. As an optional step to achieve a more unique look, you may paint or powder-coat these dimpled panels, in order to provide some additional color to your Jeep.
7. Have a helper assist you for the following steps. Hold the Rocker Klocker up to the rocker area of the Jeep, and carefully align the six (6) mounting studs of the Rocker Klocker with the six holes in the pinch weld seam. Slide the Rocker Klocker into place, with the studs protruding through the holes in the pinch weld flange.



FIGURE 10

8. With your helper applying pressure to the Rocker Klocker against the side of the Jeep, use a fine-tip felt marker to trace the six (6) elongated holes in the Rocker Klocker mounting flange under the Jeep.

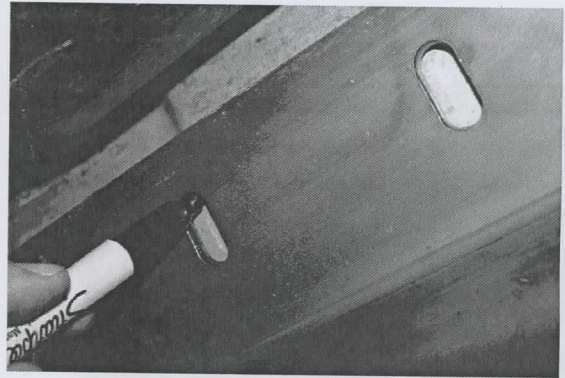


FIGURE 11

9. (Optional) For additional tire clearance at both ends of the Rocker Klocker, you may trim a small corner of the Jeep's body tub at either end of the Rocker Klocker. With the Rocker Klocker installed (it is temporarily installed at this time, it will be removed again before final installation), use a fine-tip felt marker to trace an angled cut mark on the corner of the body tub as shown.

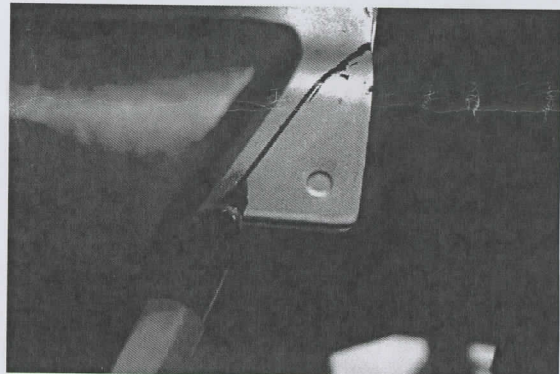


FIGURE 12

Align the cut mark with the angle of the end of the Rocker Klocker tube. After the Rocker Klocker is removed (in later steps), trim the corner with a pneumatic cut-off wheel, body saw or reciprocating saw.

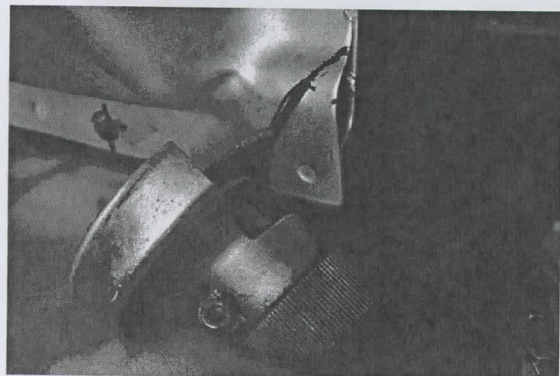


FIGURE 13

Use a file to remove burrs, then apply some aerosol clear coat paint to the cut edge to prevent rust.

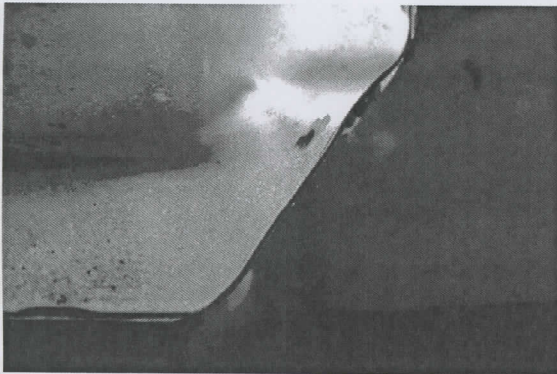


FIGURE 14

- 10. Remove the Rocker Knocker** and set it aside. Center-punch and drill 1/4" holes at each of the ovals you traced into the underside of the Jeep in step 8. Then use the 9/16" drill to open the same holes further.



FIGURE 15

- 11. Use some aerosol clear coat** or paint color of your choice to coat the cut edges of the drilled holes to prevent rust. Do this for the holes made in step 10 as well as those made earlier in the pinch weld flange in step 3.
- 12. Locate the 3/8-16 U-nut clips** that are supplied in the hardware kit. Note that some are flat along their edges while others are bulged. The flat-edged ones are referred to as "skinny" nut clips, while the bulge-edged ones are referred to as "fat" nut clips. For each side you will use three (3) skinny clips and five (5) fat clips. These nut clips will slip into the rectangular holes along the underside of the Jeep as shown in Figure 16, allowing the nut portion of the clip to locate at the round holes you just drilled adjacent to the rectangular holes.

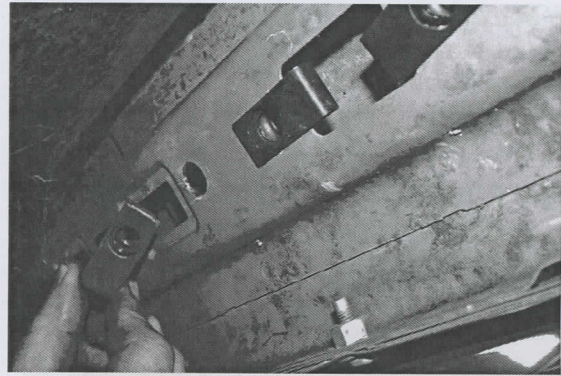


FIGURE 16

- Note that some of the rectangular holes are narrower than others, specifically at the 4th, 5th and 6th bolt locations (counting back from the front of the Jeep). These are where you will use the "skinny" clips, while you will use the "fat" clips in the wider rectangular holes.
- 13. If installing Rocker Knockers** with the optional Slider bar, re-install the dimpled panel that was removed in an earlier step. Used the 1/4-20X3/4 SS flat head cap screws, 1/4 flat washers and 1/4-20 nylon insert lock nuts that were included with the hardware kit. There will be 22 of each of these for 2-door JK's, 28 of each for 4-doors. Use the 1/4" drive ratchet, extension and 7/16" socket, along with the 5/32" hex key, to tighten these fasteners. *CAUTION: hold the screw head stationary with the hex key as you tighten the nut with the ratchet. If you let the bolt head spin it may damage the paint or powder coat.* Tighten these fasteners to 15 ft./lbs.
- 14. Reinstall the Rocker Knocker** onto the Jeep, this time for final installation. Carefully align the studs with the mounting holes in the pinch weld flange, as before. Install a 5/16" flat washer and 5/16-18 nylon insert lock nut onto each of the Rocker Knocker's mounting studs, where they protrude through the pinch weld flange. Only finger-tighten the nuts at this time.
- 15. Insert a 3/8" SS button socket head cap screw** with 3/8" split lock washer and 3/8" flat washer (in that order, under the head of the screw) through each of the eight (8) elongated holes in the Rocker Knocker mounting flange along the underside of the Jeep, and thread into the 3/8-16 U-nut clips previously installed at each location. *Be*

careful not to strip the threads on the nut clips! It is sometimes necessary to "jiggle" the bolt and/or nut clip a little bit to properly align the threads. Only finger-tighten these screws at this time.

- 16. Use the 1/2" box end wrench to tighten the six (6) 5/16-18 lock nuts on the mounting studs that protrude through the pinch weld flange.

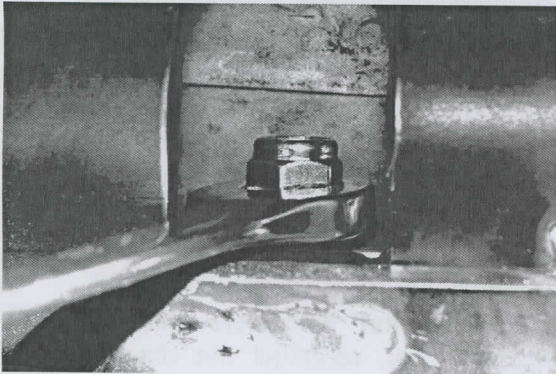


FIGURE 17

- 17. Use the 7/32" hex key to tighten the eight (8) 3/8-16X1 SS button head socket cap screws on the Rocker Knocker mounting flange along the underside of the Jeep.



FIGURE 18

- 18. Repeat the procedure for the passenger side.

WARRANTY

Poison Spyder Customs™ warranties all of the products we sell and distribute for one (1) year from the date of sale. These products will be free from defects in material and workmanship under normal installation, and use. Due to the intended use the powder coat finish is warranted for ninety (90) days. The finish warranty will not cover a product if it has been damaged in any way. Warranty is limited to repair or replacement. Poison Spyder Customs™ does not offer any type of labor or shipping allowance and all warranty claims are subject to inspection by Poison Spyder Customs™.

At the discretion of Poison Spyder Customs™, the products in question can be repaired or replaced when found defective. Prior to any replacement or repair, written authorization must be obtained from Poison Spyder Customs™. Failure to contact us prior to having warranty work preformed will immediately void all applicable warranties; and it is then the sole responsibility of the customer to remit any payment incurred.

The warranty expressed above is the sole warranty of Poison Spyder Customs™, and any other expressed or implied warranties are hereby specifically excluded and disclaimed.

HOLD HARMLESS AGREEMENT

1. In purchasing a Poison Spyder Customs Product™ I release, waive, discharge and covenant not to sue Poison Spyder Customs officers, servants, agents, or employees (hereinafter referred to as Releasees) from any and all liability, claims, demands, actions and causes of action whatsoever arising out of or related to any loss, damage, or injury, including death, that may be sustained by me (or anyone else), any property belonging to me (or anyone else), whether caused by the negligence of the releasees or otherwise, while working on, using or any activity related to this product.
2. I am fully aware of risks and hazards connected with the use of a this product and I elect to voluntarily engage in such use of this product knowing that the use may be hazardous to me and my property. I voluntarily assume full responsibility for any risks of loss, property damage or personal injury, including death,

that may be sustained by me (or anyone else), or any loss or damage to property owned by me (or anyone else), as a result of using this product, whether caused by the negligence of releasees or otherwise.

3. I further agree to indemnify and hold harmless the releasees from any loss, liability, damage or costs, including court cost and attorney fees, that they may incur due to my use of a this product, whether caused by negligence of releasees or otherwise.
4. It is my express intent that this Release and Hold Harmless Agreement shall bind the members of my family and spouse, if I am alive, and my heirs assigns and personal representative, if I am deceased, and shall be deemed as a release, waiver, discharge, and covenant not to sue the above named releasees. I further agree that this Waiver of Liability and Hold Harmless Agreement shall be construed in accordance with the laws of the State of California.

By accepting this product, I acknowledge and represent that I have read the above Waiver and Liability and Hold Harmless Agreement, understand it and accept it voluntarily as my own free act and deed; no oral presentations, statements, or inducements, apart from the foregoing written agreement, have been made; I am at least eighteen (18) years of age and fully competent; and I execute this Release for full, adequate and complete consideration fully intending to be bound by same.

If you do not agree with the preceding Hold Harmless Agreement, you may return the product and receive a full refund. Please, contact a Poison Spyder Customs™ sales representative and they will issue a call tag for the product in question. Once the product has been received by Poison Spyder Customs™ a full refund will be issued.

INSTALLATION INSTRUCTIONS