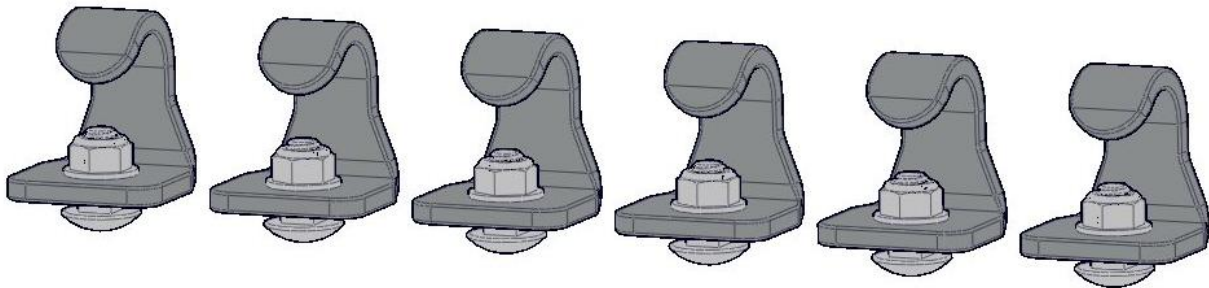




Installation Guide



60222

Kargo Master Safari
Rancho Cordova, CA 95742
800-343-7486
CustomerService@Safari.com

***PLEASE READ ALL INSTRUCTIONS AND WARNINGS PRIOR TO ASSEMBLING,
INSTALLING AND USING THIS PRODUCT***

Warning



Always check for wires, fuel tanks and lines, brake lines and other important vehicle functionality items prior to drilling and installing all products.

Tools Needed

- 1/2" Wrench
-

Table of Contents

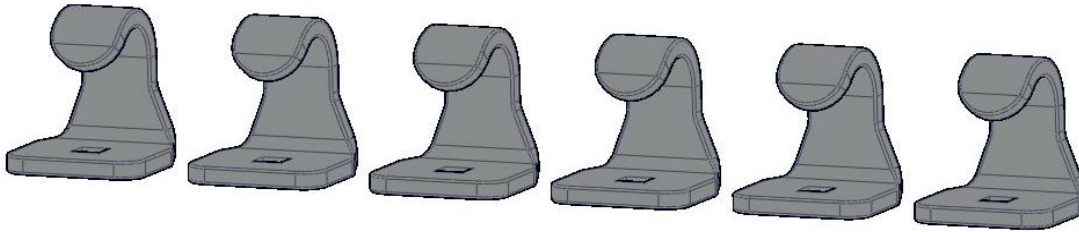
Parts List	3
Hardware List	3
Step 1 Insert Carriage bolt	4
Step 2 Tighten rope hook.....	4

Before You Begin

Be sure to have a platform installed on vehicle. Extrusion is needed to install this part.


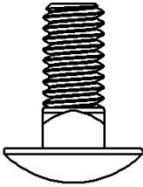
Do not tighten bolts until told to do so.
Snug to allow movement, Yet also stay in place.

Parts List



6x
60222-00-001

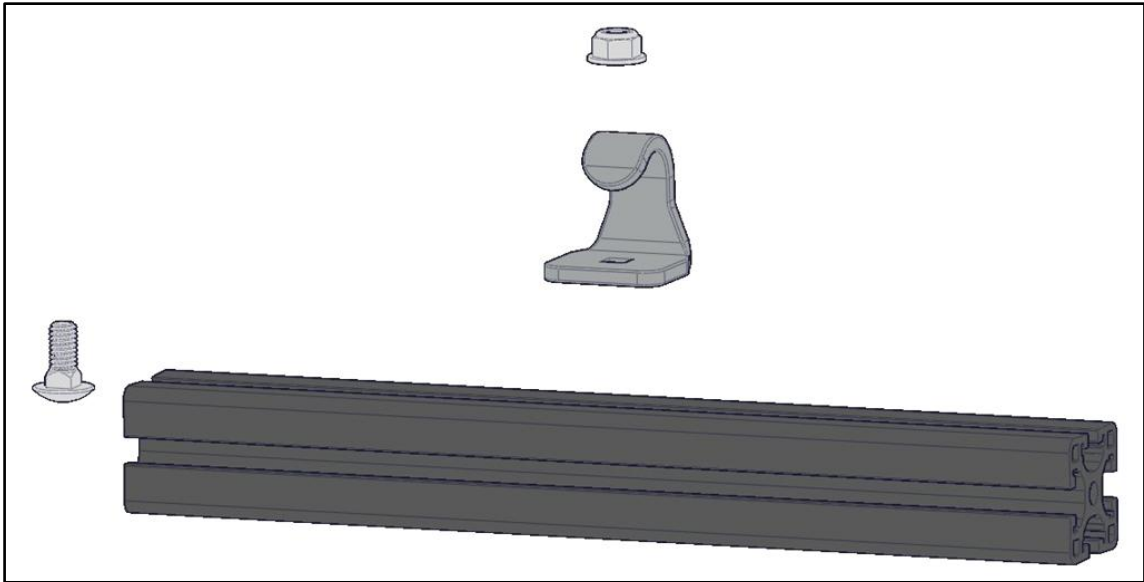
Hardware List

	PART NUMBER	DESCRIPTION	QTY.
	92018A320	5/16-18 Flanged Nyloc Nut	6
	93548A581	5/16-18 x 3/4" Carriage Bolt	6

*Hardware to Scale

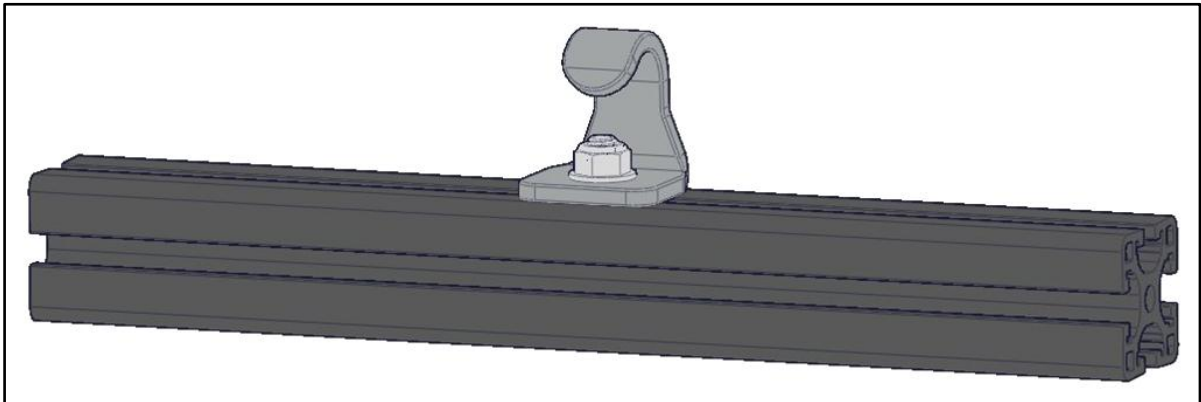
Step 1 - Insert carriage bolt

- Slide carriage bolt into extrusion where the rope hook wants to be positioned.



Step 2 - Tighten hook into place

- Tighten hook to extrusion using the previously installed carriage bolt and a flanged nyloc nut.



Repeat wherever a tie down location is wanted.
TIGHTEN all nuts

Your installation is now complete