

KARGGO MASTER®



KARGGO MASTER®












56000 Hardware List

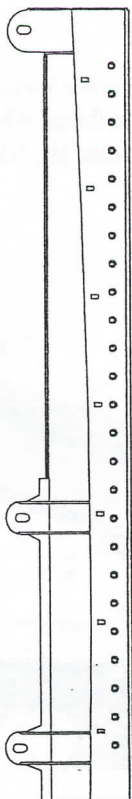
Tools Needed

3/16" Allen Hex 5/16" Allen Hex	M13 Socket and Wrench 1/2" Socket and Wrench
------------------------------------	---

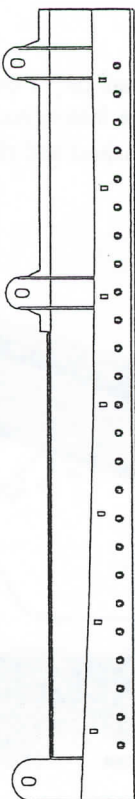
Hardware Pack

(A) QTY - 12 5/16" - 18 x 3/4" Carriage Bolt		(G) QTY - 4 1/2" x 1 1/2" Button Head	
(B) QTY - 38 5/16" Flat Washer		(H) QTY - 4 1/2" Flat Washer	
(C) QTY - 12 5/16" - 18 NYLOC		(I) QTY - 4 1/2" Split Lock Washer	
(D) QTY - 26 5/16" Split Lock Washer			
(E) QTY - 22 5/16" x 7/8" Button Head			
(F) QTY - 4 M8 x 25mm Hex			

56000 Parts List



56000-11 (1x)



56000-21 (1x)



56000-12 (1x)



56000-22 (1x)



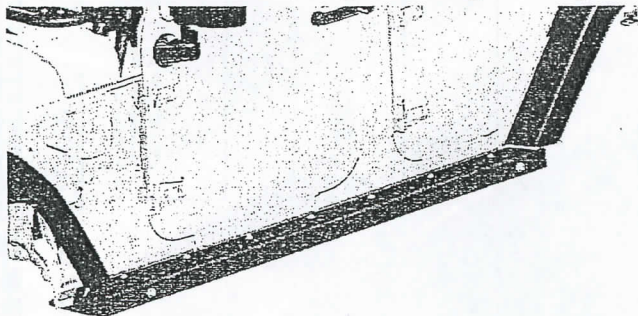
56000-13 (4x)

KARGO MASTER®

SAFARI

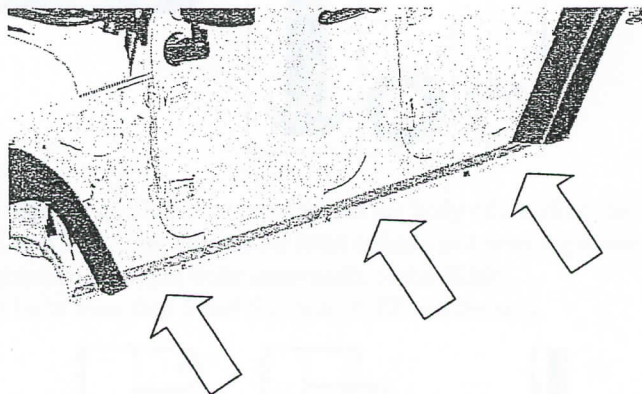
56000 Installation Instructions

**Driver side shown, repeat on passenger side



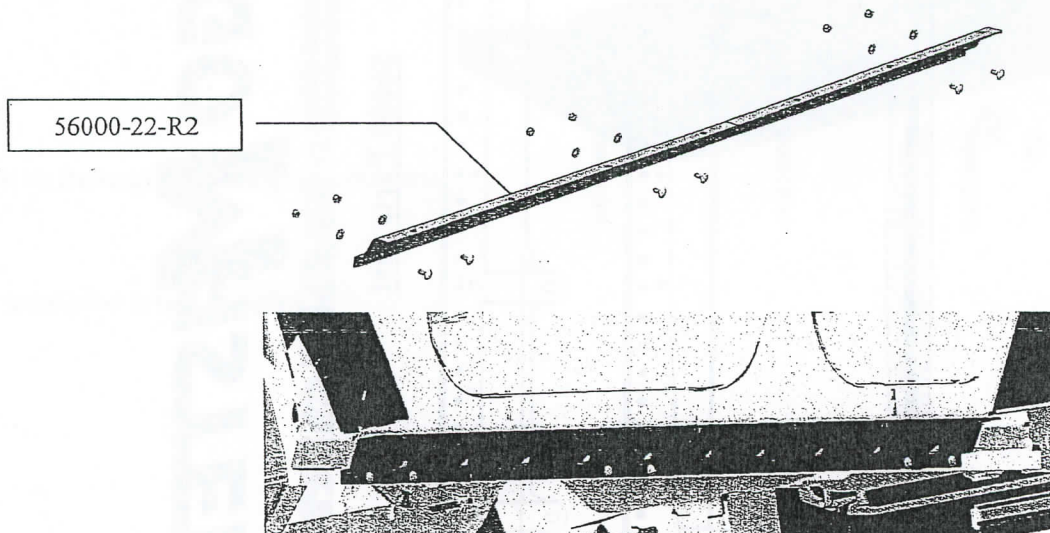
Step 1

- Remove factory rocker guard from JEEP.
- Remove all three body mount bolts.



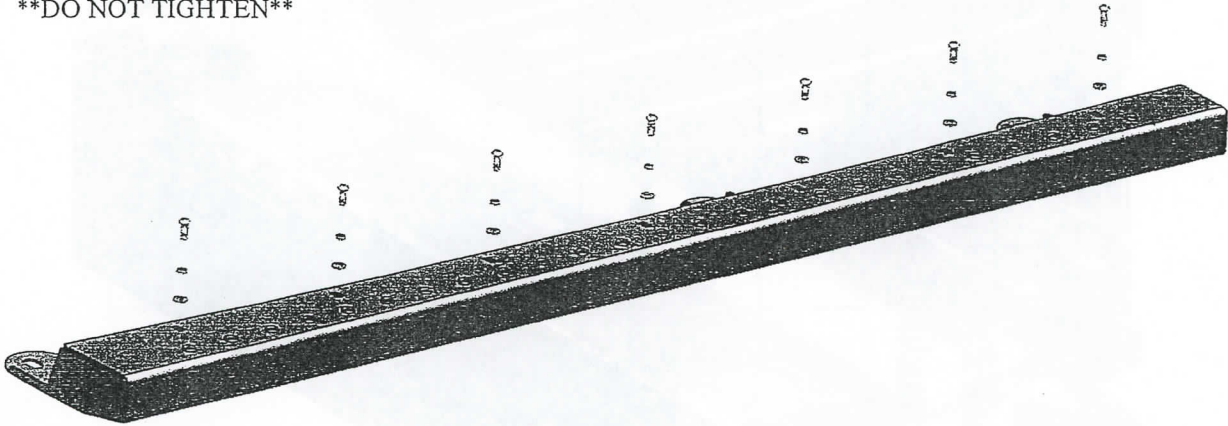
Step 2

- Bolt Inner support (56000-22-R2) to the flange where the factory rocker was removed. Bolt through the square holes in the inner support using six 5/16" carriage bolts, six 5/16" washers and six 5/16" NYLOC nuts.
*TIGHTEN BOLTS



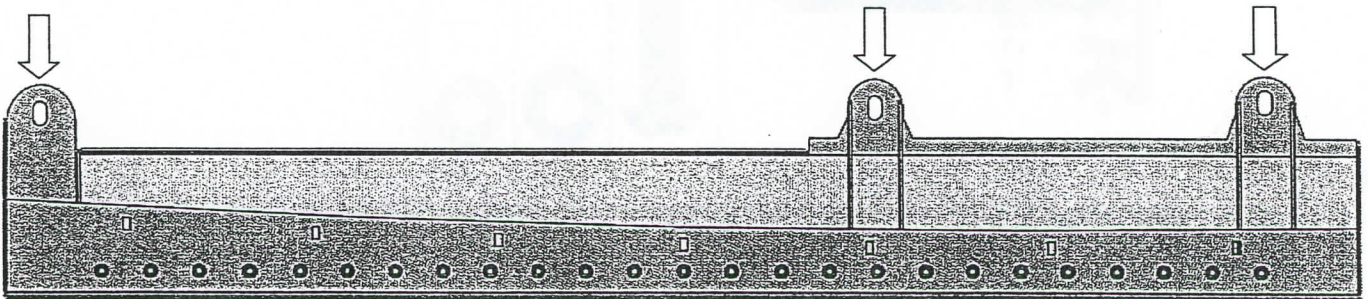
Step 3

- Place large step cover (56000-21-R2) on top of previously installed inner support.
 - Bolt through the slot in the step cover into inner support using seven 5/16" button heads, seven 5/16" lock washers and seven 5/16" flat washers.
- **DO NOT TIGHTEN****



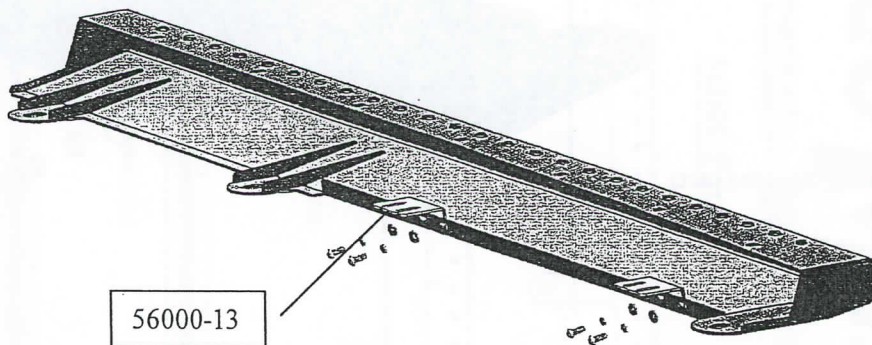
Step 4

- Under the JEEP, reinstall the 3 body mount removed in step 1. Bolt through the slot in the step cover.
- **DO NOT TIGHTEN****



Step 5

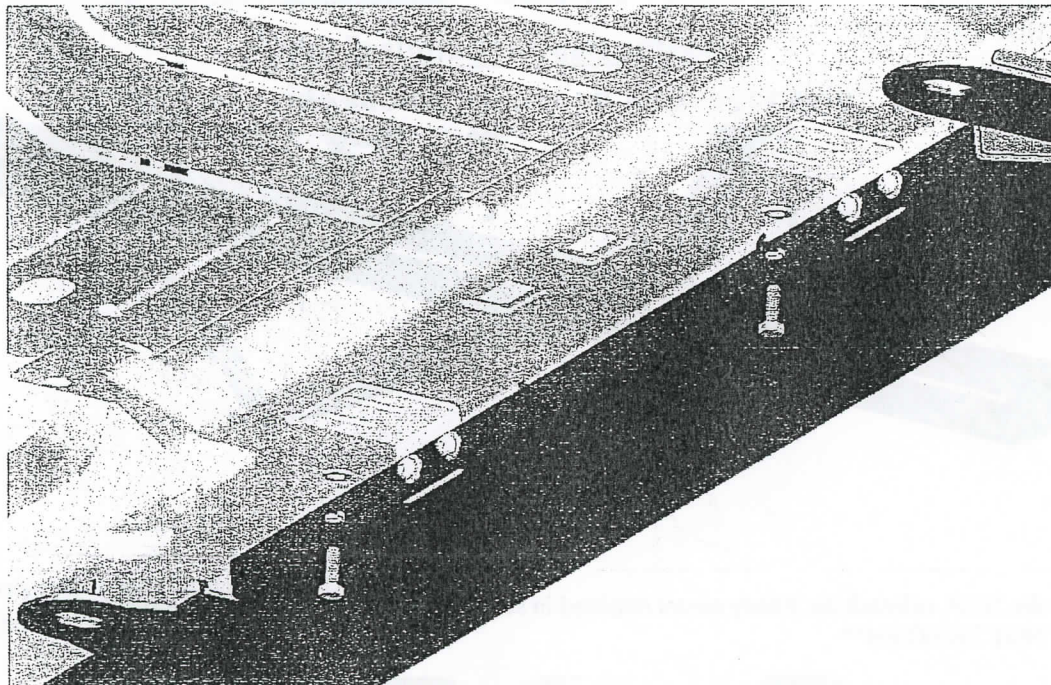
- Back under the JEEP, bolt support brackets (56000-13) to the step cover using four 5/16" button heads, four 5/16" lock washers and four 5/16" flat washers.
- **DO NOT TIGHTEN****



Step 6

- Bolt through previously installed support bracket into the weldnut underneath of JEEP using two M8 bolts, two lock washers and two flat washers.

****DO NOT TIGHTEN****

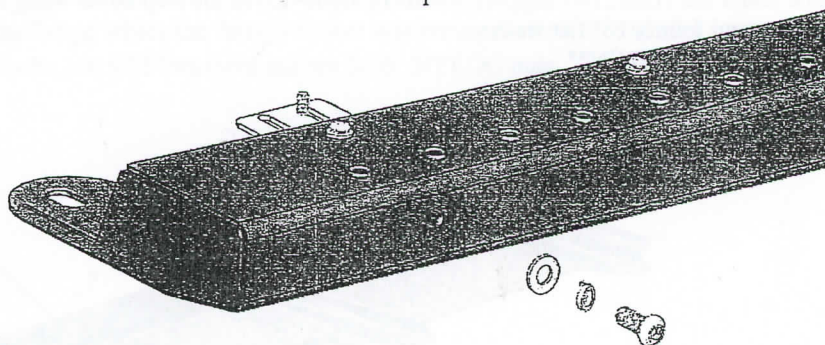


Step 7

- From the outside of the JEEP, align the gap between the step and the body of the JEEP to your liking.
- Tighten button head bolts from step 3 starting with the far most outside and working towards the middle.
- Once the top bolts are tight, tighten body mount bolts underneath of the JEEP.
- Finally, tighten support bracket bolts from step 5 and 6 to both JEEP and the step.

Step 8

- Bolt 1/2" Button head, 1/2" lock washer and 1/2" flat washer to outside of step.



Repeat on Passenger side using mirrored parts.

Your installation is now complete