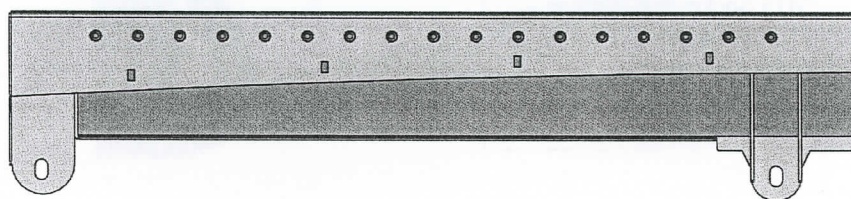


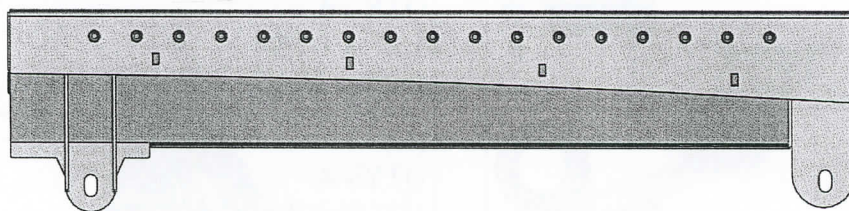
KARGO MASTER®

SAFARI

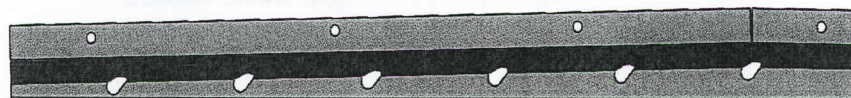
56010 Parts List



56010-11 (1x)



56010-21(1x)



56010-12 (1x)



56010-22(1x)



56000-13 (4x)

KARGO MASTER®

SAFARI

56010 Hardware List

Tools Needed

3/16" Allen Hex
5/16" Allen Hex

M13 Socket and Wrench
1/2" Socket and Wrench

Hardware Pack

(A)
QTY - 8
5/16"-18 x 3/4"
Carriage Bolt



(B)
QTY - 28
5/16" Flat Washer



(C)
QTY - 8
5/16" - 18 NYLOC



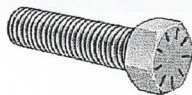
(D)
QTY - 20
5/16" Split Lock Washer



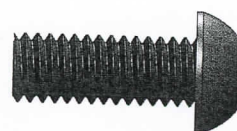
(E)
QTY - 16
5/16" x 7/8"
Button Head



(F)
QTY - 4
M8 x 25mm Hex



(G)
QTY - 4
1/2" x 1 1/2"
Button Head



(H)
QTY - 4
1/2" Flat Washer



(I)
QTY - 4
1/2" Split Lock Washer

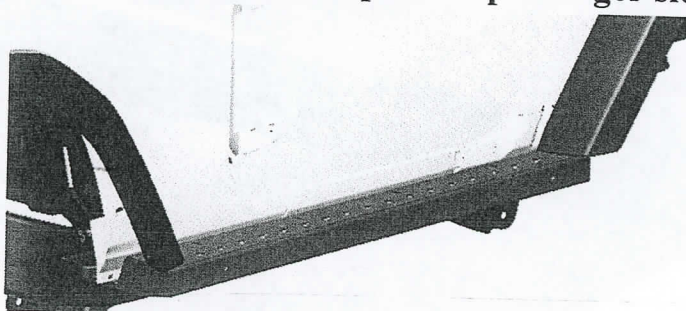


KARGO MASTER[®]

SAFARI

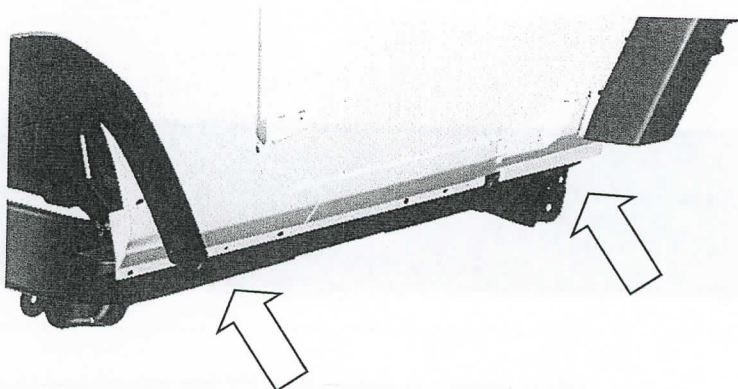
56010 Installation Instructions

****Driver side shown, repeat on passenger side**



Step 1

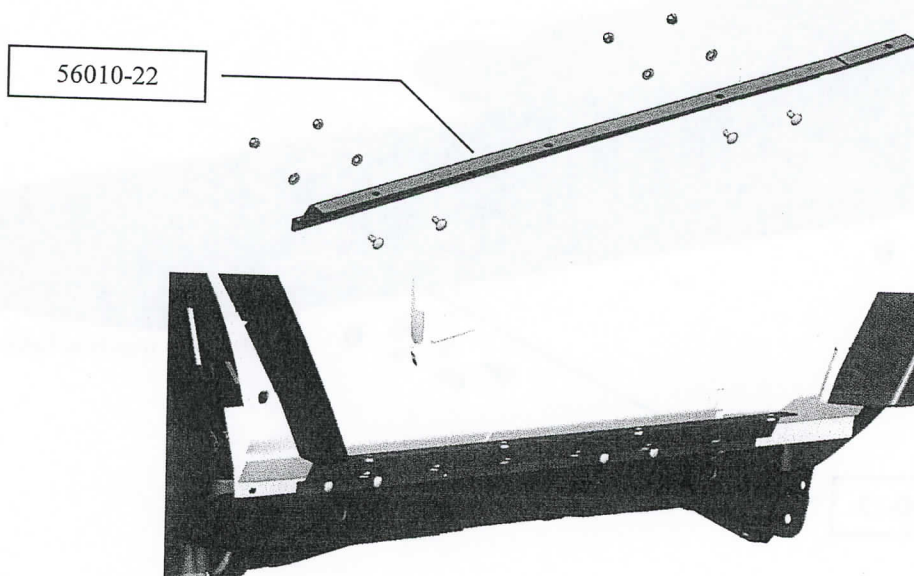
- Remove factory rocker guard from JEEP.
- Remove both body mount bolts.



Step 2

- Bolt inner support (56010-22) to the flange where the factory rocker was removed. Bolt through the square holes in the inner support using four 5/16" carriage bolts, four 5/16" washers and four 5/16" NYLOC nuts.

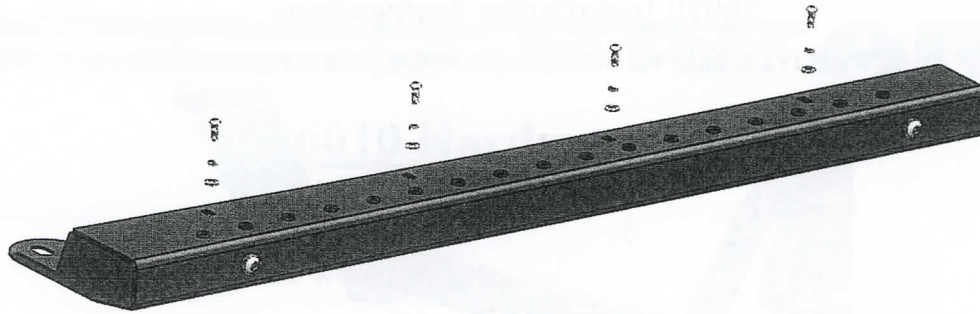
***TIGHTEN BOLTS**



Step 3

- Place large step cover (56010-21) on top of previously installed inner support.
- Bolt through the slots in the step cover into inner support using four 5/16" button heads, four 5/16" lock washers and four 5/16" flat washers.

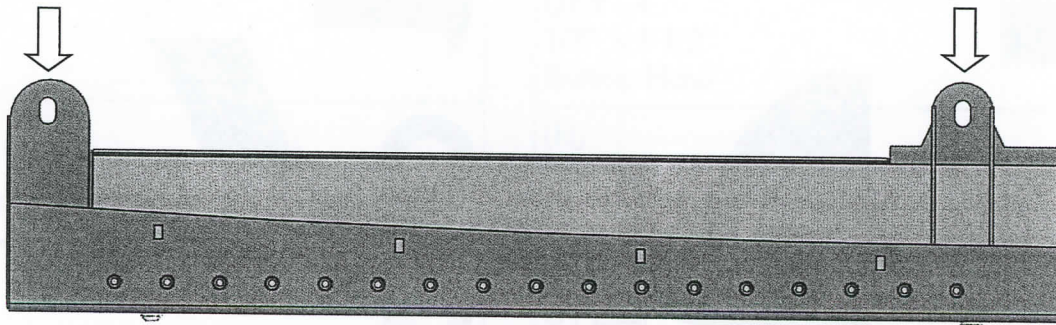
****DO NOT TIGHTEN****



Step 4

- Under the JEEP, reinstall the 2 body mount removed in step 1. Bolt through the slot in the step cover.

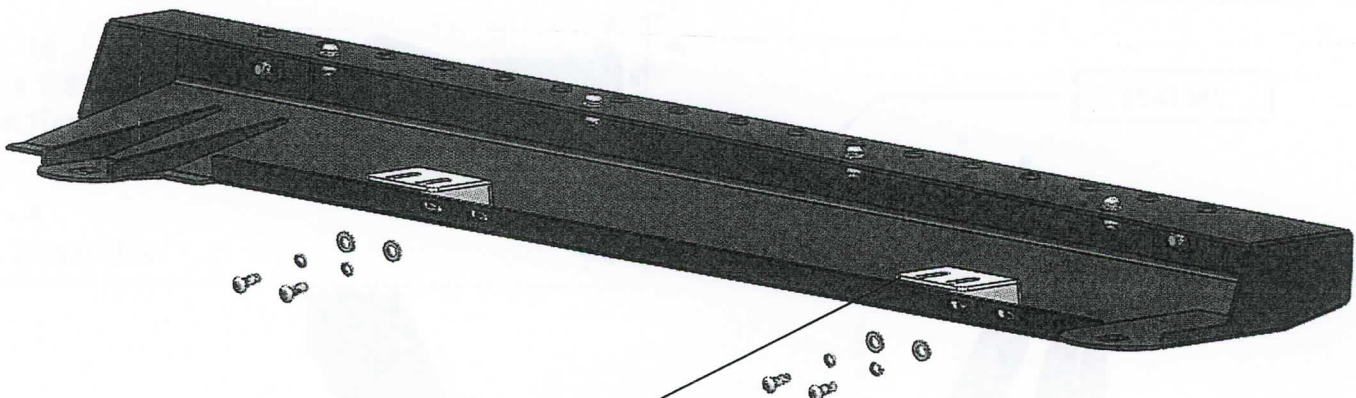
****DO NOT TIGHTEN****



Step 5

- Back under the JEEP, bolt support brackets (56000-13) to the step cover using four 5/16" button heads, four 5/16" lock washers and four 5/16" flat washers.

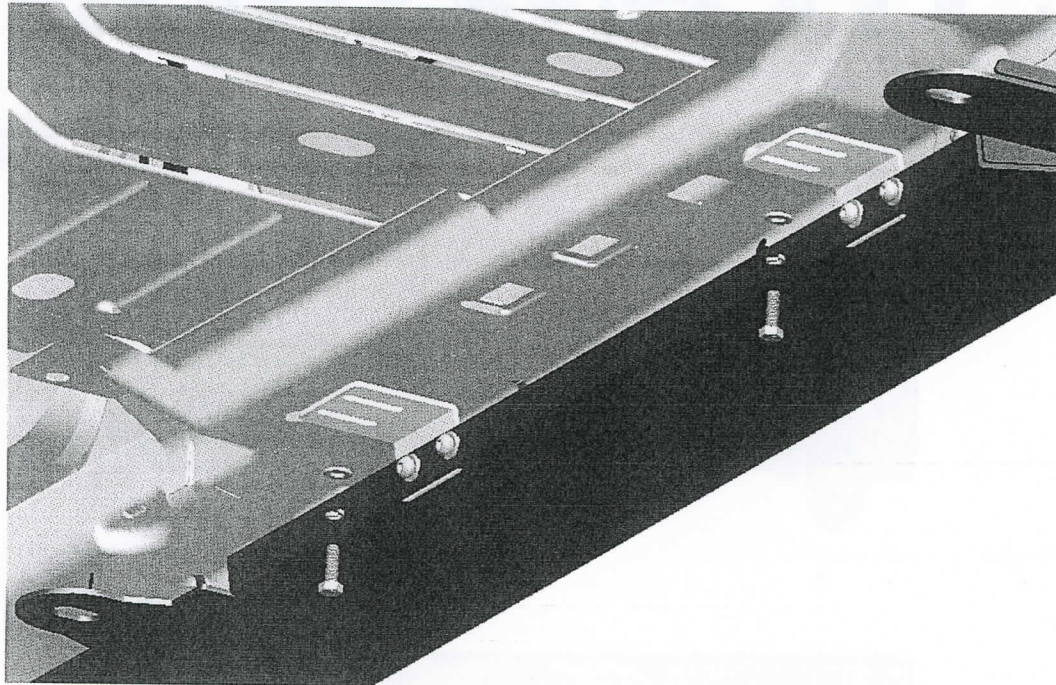
****DO NOT TIGHTEN****



56000-13

Step 6

- Bolt through previously installed support bracket into the weldnut underneath of JEEP using two M8 bolts, two lock washers and two flat washers.
DO NOT TIGHTEN

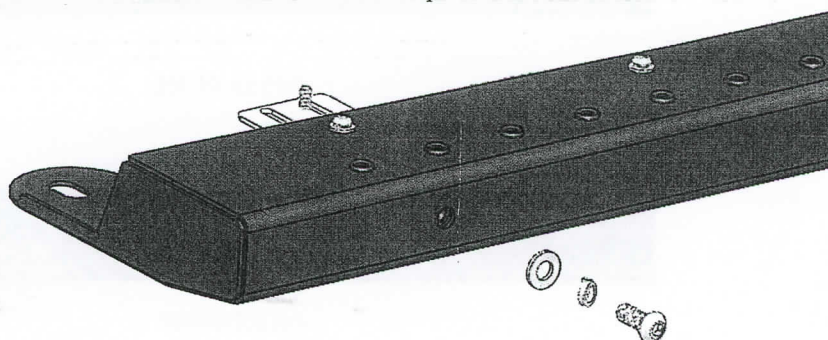


Step 7

- From the outside of the JEEP, align the gap between the step and the body of the JEEP to your liking.
- Tighten button head bolts from step 3 starting with the far most outside and working towards the middle.
- Once the top bolts are tight, tighten body mount bolts underneath of the JEEP.
- Finally, tighten support bracket bolts from step 5 and 6 to both JEEP and the step.

Step 8

- Bolt 1/2" Button head, 1/2" lock washer and 1/2" flat washer to outside of step.
- Repeat at both ends



Repeat on Passenger side using mirrored parts.

Your installation is now complete

