



Front Bumper W/ LED Fog Lights & Optional Flood Lights

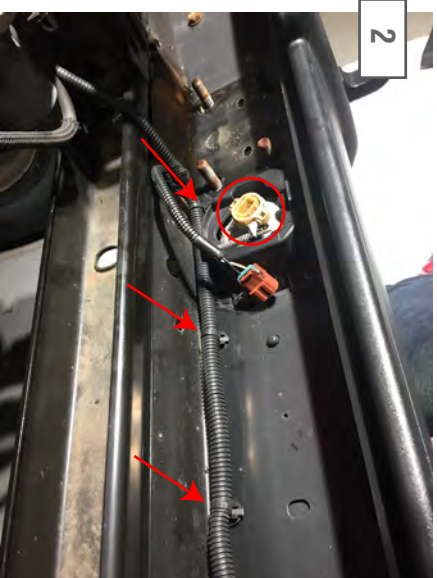
Jeep Wrangler JK (2007-2017)

Tools Required:

Basic Hand Tools



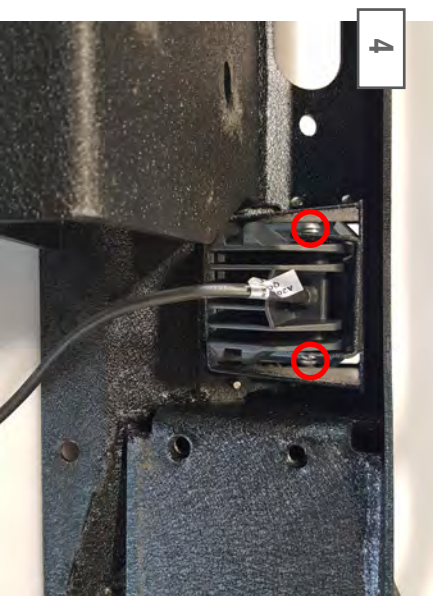
Remove the (6) plastic push pins securing the factory splash shield to the vehicle. (4) Across the front edge, (2) on the rear edge.



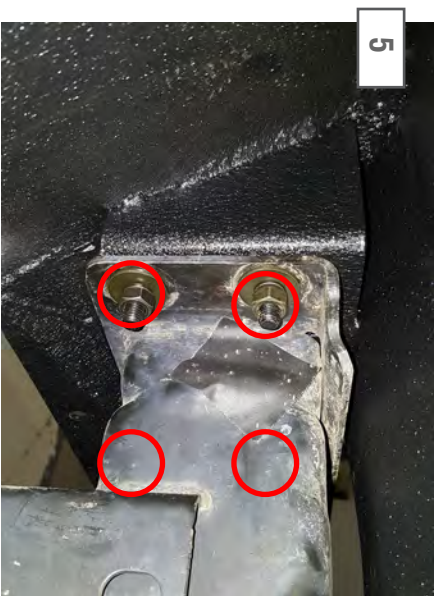
From under the vehicle, remove the factory fog light connectors and free the fog light wiring loom from the bumper.



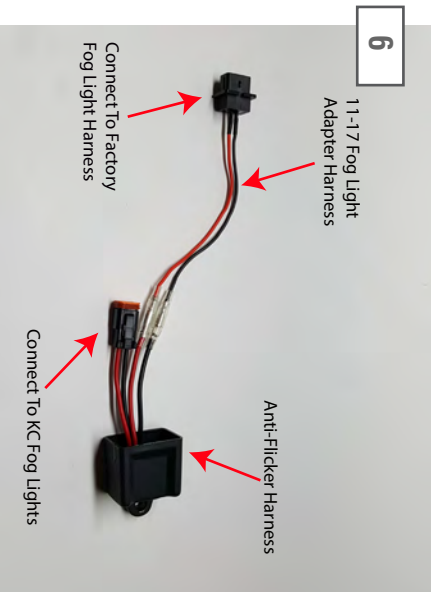
From under the vehicle, access and remove the (8) 18mm nuts securing the factory bumper to the vehicle.



Install the (2) LED Fog Lights to the middle slots of the bumper using the (4) M6 allen bolts, and lock washers.



Install the bumper by using the (4) M10 nuts, (4) M10 x 25mm bolts, (8) lock washers, and (8) flat washers to the vehicle. Torque to 40 lb ft.



Connect the anti-flicker harness to the correct vehicle fog light adapter harness. Connect the fog light adapter harness to the factory fog light wiring harness. Connect the KC fog light to the anti-flicker harness.



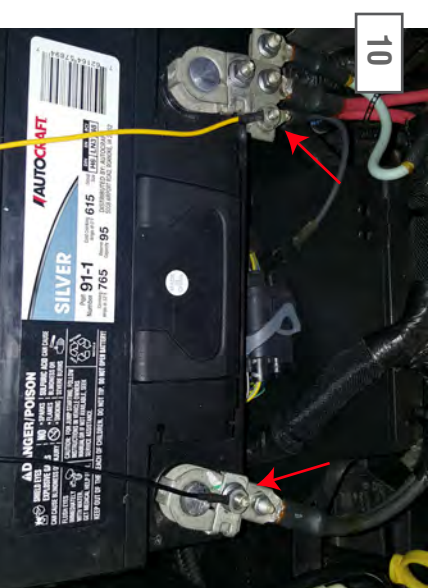
Test and adjust fog lights at desired.



Optional Flood Light Installation:
Install the (2) LED Flood Lights using the hardware provided in the light packaging to the outer slots of the bumper. If choosing not to use the LED lighting, the bumper will include a bolt on mesh cover, if optional Flood lights are not used. Secure the cover to the bumper using the provide (2) M6x1.0x20mm bolts and flat washers.



Optional Flood Light Wiring:
Connect the (2) LED Flood Lights (outer lights) into the supplied harness. Zip tie any excess wire away from moving and/or hot engine components.



Optional Floodlight Wiring:
Install the yellow 12 + volt wire to the positive battery terminal. Connect the black ground wire to the negative battery terminal. Secure any extra wire out of the way.



Optional Floodlight Wiring:
Route the on/off switch to the interior of the vehicle. Mount the switch in the desired location. Zip tie any extra loose wiring out of the way.



12

Optional Skid Plate Installation:

Install the skid plate to the bumper using the supplied (9) M8 x 1.25 x 25mm button head bolts, nuts, and washers. **Note: Long extension may be required for inner nuts.



13

Optional Skid Plate Installation:

Install the skid plate to the chassis using the supplied (2) M8 x 1.25 x 40mm hex head bolts, lock washers, large washers, and nuts.

Contents:

- (1) - Front Bumper
- (2) - KC LED Fog Lights
- (2) - Anti Flicker Harnesses
- (2) - 07-10 Fog Light Adapter Harnesses
- (2) - 11-17 Fog Light Adapter Harnesses
- ** (2) - Optional KC LED Flood Lights
- ** (1) - Optional Flood Light Harness

Bumper Hardware:

- (4) - M10 x 1.5 x 25mm Bolts
- (8) - 10mm Flat Washers
- (8) - 10mm Lock Washers
- (4) - M10 Nuts
- (9) - M8 x 1.25 x 25 Button Head Bolts
- (18) - 8mm Flat Washers
- (9) - 8mm Lock Washers
- (9) - M8 Nuts
- (4) - M6 x 1.0 16mm Button Head Screws
- (24) - M6 x 1.0 12mm Button Head Screws
- (28) - 6mm Flat Washers
- (28) - 6mm Lock Washers
- (1) - Allen Wrench

Optional Skid Plate Hardware:

- (2) - M8 x 1.25 40mm Hex Head Bolts
- (9) - M8 x 1.25 25mm Button Head Screws
- (11) - 8mm Lock washers
- (18) - 8mm Flat Washers
- (11) - M8 Hex Nuts
- (4) - 8mm Large Washers
- (1) - Allen Wrench

Trouble Shooting:

If the LED light stops working at any time begin by checking the fuse. If the fuse is blown, check the switch wiring. Make sure it matches the diagram on the back of the switch. The colors may not always be the same as pictured. If the light still doesn't work, ensure the plug is seated all the way, they are a tight connection.