



www.skyjacker.com

## 2007- 2016 Jeep Wrangler JK 2 Door / 4 Door 3.5"- 4" Suspension Lift Installation Instructions

### Required Tools List:

- Safety Glasses
- Metric / Standard Wrenches & Sockets
- Drill & Assorted Drill Bits
- Floor Jack
- Jack Stands
- Measuring Tape
- Torque Wrench



Before beginning the installation, read these instructions & the enclosed driver's WARNING NOTICE thoroughly & completely. Also affix the WARNING decal in the passenger compartment in clear view of all occupants. Please refer to the Parts List to insure that all parts & hardware are received prior to disassembly of the vehicle. If any parts are found to be missing, contact SKYJACKER® Customer Service at 318-388-0816 to obtain the needed items. If you have any questions or reservations about installing this product, contact SKYJACKER® Technical Assistance at 318-388-0816.

Make sure you park the vehicle on a level concrete or asphalt surface. Many times a vehicle is not level (side-to-side) from the factory, but usually not noticed until a lift kit has been installed which makes the difference more visible. Using a measuring tape, measure the front & rear (both sides) from the ground up to the center of the fender opening above the axle. Record this information below for future reference.

Driver Side Front: \_\_\_\_\_

Passenger Side Front: \_\_\_\_\_

Driver Side Rear: \_\_\_\_\_

Passenger Side Rear: \_\_\_\_\_

### Important Notes:

- The draglink must be adjusted to center the steering wheel before the vehicle is driven. Failure to do so will cause computer errors, odd handling characteristics, & poor performance.
- Cam bolts are included with this lift system for front & rear axle adjustment. For vehicles with 5" or more inches of lift, a replacement rear driveshaft may be required. Please contact Skyjacker Customer Service for more information at 318-388-0816.
- If larger tires (10% more than the OEM diameter) are installed, speedometer recalibration will be necessary. Contact your local Jeep dealer or an authorized dealer for details.
- After installation, a qualified alignment facility is required to re-align the vehicle to the OEM specifications.

## Component Box Breakdown:

**Part #: JK350BPBSR / JK350BPH / JK350BPHSR / JK350BPM / JK350BPMSR / JK350BPN / JK350BPNSR / JK40BPBSR / JK40BPH / JK40BPHSR / JK40BPN / JK40BPNSR / JK400BPM / JK400BPMSR**

Item #	Description	Qty	Item #	Description	Qty
JK25FS / JK25FS-SR	JK FRONT COIL SPRING (Included With JK350 Kit)	2	I-JK40BP	INST SHT: 3.5-4" JEEP JK	1
JK40FS / JK40FS-SR	JK FRONT COIL SPRING (Included With JK40 Kit)	2	B8537 / B8567 (Rear)	BLACK MAX SHK W/BLK (Included With BPB Kits)	2
JK25RS / JK25RS-SR	JK REAR COIL SPRING (Included With JK350 Kit)	2	(2 Door / 4 Door)		
JK40RS / JK40RS-SR	JK REAR COIL SPRING (Included With JK40 Kit)	2	B8565 (Front)	BLACK MAX SHK W/BLK (Included With BPB Kits)	2
CAM700	JK CAM BOLTS	2	H7037 / H7067 (Rear)	HYDRO SHCK W/RED	2
JK40RBS-S	JK REAR BMP STP BRKT	2	(2 Door / 4 Door)	(Included With BPH Kits)	
ABSS2535	JK FRT BMP STP SPACER	2	H7065 (Front)	HYDRO SHOCK W/RED (Included With BPH Kits)	2
JKFTB-B	JK FRONT TRK BAR BRKT	1	M9537 / M9567 (Rear)	MONOTUBE SHOCK	2
JK24RTB-B	JK REAR TRK BAR BRKT	1	(2 Door / 4 Door)	(Included With BPM Kits)	
SBE502	JK REAR SWAY BAR LKS	1	M9565 (Front)	MONOTUBE SHOCK (Included With BPM Kits)	2
HB-JK40	HDWR BAG: JK	1	N8037 / N8067 (Rear)	NITRO SHOCK W/RED	2
HB-JK4BL	HDWR BAG: BRK LINE BK	1	(2 Door / 4 Door)	(Included With BPN Kits)	
JKBRC15	JK RR TRK BAR BRACE	1	N8065 (Front)	NITRO SHOCK W/RED (Included With BPN Kits)	2
JKBRC34	JK FRT TRK BAR BRACE	1			

## Hardware Bag Breakdown:

### **Part # HB-SBE502**

Item #	Description	Qty	Item #	Description	Qty
403712	ES22 SLEEVE/1.25" LONG	4	12USSW	1/2" USS WASHER	4
12X212BHCTB	1/2" X 2 1/2" BUTTON HEAD BLT	4	12CTN	1/2" COARSE N/I LOCK NUT	4
12SAEW	1/2" SAE WASHER	4			

### **Part # HB-JK40**

Item #	Description	Qty	Item #	Description	Qty
14X80MMB	14MM X 80 METRIC BOLT	1	516FTN	5/16" FINE THRD LOCKNUT	4
14MMN	14MM NYLON LOCK NUT	1	716X1FTB	7/16 X 1 BOLT,FINE THD	1
12X114FTB	1/2 X 1 1/4 FINE THD BOLT	1	716X212FTB	7/16 X 2 1/2 FINE THRD BLT	2
12SAEW	1/2 SAE WASHER	1	716SAEW	7/16 SAE WASHER	5
12FTN	1/2-20 FINE N/I LOCK NUT	1	716FTN	7/16-20 FINE N/I LOCK NUT	3
38X4BHB	3/8 X 4 BUTTON HEAD BLT	2	916X3FTB	9/16 X 3 FINE THREAD BLT	1
38SAEW	3/8 SAE WASHER	2	916SAEW	9/16 SAE WASHERS	5
38CTN	3/8-16 COARSE LOCK NUT	2	916FTN	9/16-18 NYLON LOCKNUT	2
516X1FTB	5/16 X 1 FINE THRD BOLT	4	CS1625	CRUSH SLEEVE JKRTB	1
516SAEW	5/16 SAE WASHER	8	916X312FTB	9/16 X 3 1/2 FINE THRD BLT	1

## Part # HB-JK4BL

Item #	Description	Qty
JKBE4D	BRAKE LINE BRACKET	2
14X1FTB	1/4 X 1 FINE THRD BOLT	2

Item #	Description	Qty
14SAEW	1/4 SAE WASHER	4
14FTN	1/4" FINE THRD N/I LOCKNUT	2

## Part # HB-JKBRC15

Item #	Description	Qty
516X1CTB	5/16 X 1 CRS THREAD BOLT	3
516XTFW	5/16" EXTRA THICK FLAT WASH	3

Item #	Description	Qty
516LW	5/16" GRADE 8 LOCK WASHER	3

## Part # HB-JKBRC34

Item #	Description	Qty
516FTN	5/16" FINE THRD N/I LOCKNUT	3
516LW	5/16" GRADE 8 LOCK WASHER	3
516SAEW	5/16 SAE WASHER	9
516XTFW	5/16" EXTRA THICK FLAT WASH	3
516X1CTB	5/16 X 1 CRS THREAD BOLT	3

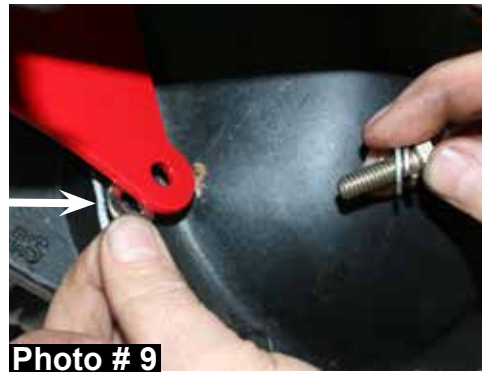
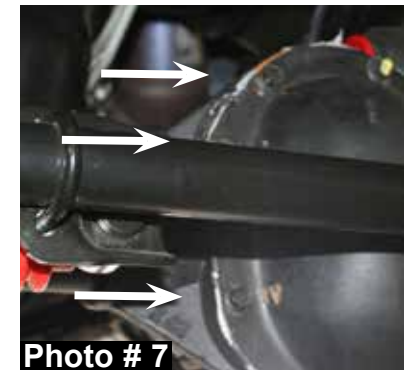
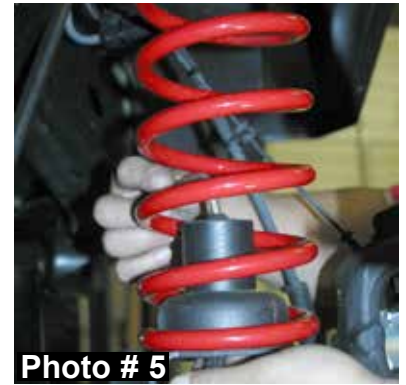
Item #	Description	Qty
516X1FTB	5/16 X 1 FINE THRD BOLT	3
716FTN	7/16-20 FINE N/I LOCK NUT	1
716SAEW	7/16 SAE WASHER	2
716X1FTB	7/16 X 1 BOLT,FINE THD GRD8	1

### Front Installation:

1. Park the vehicle on flat level ground & set the emergency brake.
2. Raise the front of the vehicle & support the frame rails using jack stands.
3. Remove the front tires / wheels.
4. Disconnect the OEM front sway bar end links using a 18mm socket.  
**Note:** Save the OEM hardware. It will be re-used later for Step # 27 of this installation.
5. Disconnect the OEM front track bar using a 21mm socket. (See Photo # 1)
6. If installing a Skyjacker Steering Stabilizer (Part# 7003), Remove the OEM steering stabilizer using a 18mm socket. (See Photo # 2)
7. Disconnect & remove the OEM front shocks using a 18mm socket.
8. Remove the OEM front coils. (See Photo # 3)
9. Mark the location of the driveshaft & yoke, then remove.
10. Locate the new Skyjacker front bump stop spacers. Place the bump stop spacers on the center of the bump stop pad located on the front axle. Mark & drill using a 25/64" drill bit. (See Photo # 4)



11. Install the bump stop spacer & coil spring. Attach the bump stop spacer to the axle using the 3/8" x 4" button head bolt, washer, & nut. (See Photo # 5)
12. Locate the OEM front track bar mount. Place the new Skyjacker relocation bracket inside the OEM mount. Drill the outer OEM holes all the way through the rearward plate using a 7/16" drill bit. (See Photo # 6) Attach the bracket at the outer two locations using the 7/16" x 2 1/2" fine thread bolts, washers, & nuts. Raise the differential in order to load the front coil springs & attach the track bar to the lower mount.
13. Remove the three upper left differential cover bolts. (See Photo # 7)
14. Hold the new Skyjacker differential bracket (D30 or D44) up to the differential. (See Photo # 8) Place the thick 5/16" washers between the new differential bracket & differential. (See Arrow in Photo # 9) Attach using the 5/16" x 1" coarse thread bolts, flat washers, & lock washers. (See Photo # 9) **Note:** Do not tighten at this time.
15. Attach the new Skyjacker rear brace to the upper rear mounting bolt of the track bar bracket. (See Photo # 10)





16. Install the new Skyjacker support brace between the new differential bracket & rear mounting bolt of the track bar bracket using the original 14mm hardware, 5/16" x 1" fine thread bolts, flat washers, & nuts. (See Photo # 11 & # 12)  
**Note:** Do not tighten at this time.
17. Clamp the new rear brace to the OEM spring perch & drill through the new rear brace & OEM spring perch using a 7/16" drill bit. Install the 7/16" x 1" fine thread bolt, washers, & nut to the perch & tighten at this time. (See Photo # 13)
18. Once the 7/16" hardware has been tightened, complete the install by tightening all remaining 14mm & 5/16" hardware.
19. Re-Attach the front drive shaft.
20. If installing a Skyjacker steering stabilizer (Part # 7003), install it at this time. (See Photo # 14)
21. Install the new Skyjacker front shocks using the supplied hardware. (See Photo # 15)
22. Install the front tires / wheels & lower the vehicle to the ground.

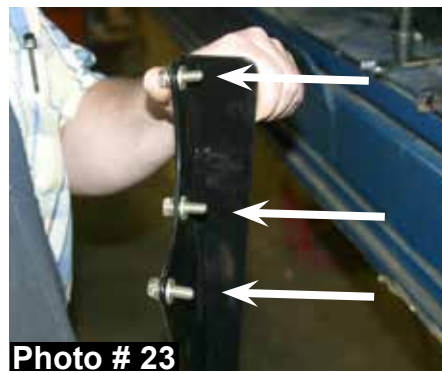
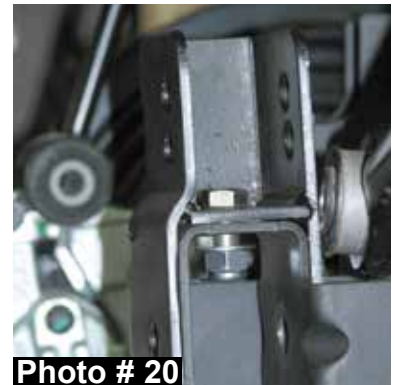


### **Rear Installation:**

23. Raise the rear of the vehicle & properly support the frame rails using jack stands.
24. Remove the rear tires / wheels.
25. Remove the OEM rear shocks using a 16mm socket. (See Photo # 16)
26. Disconnect the OEM rear track bar from the axle using a 21mm socket. (See Photo # 17)

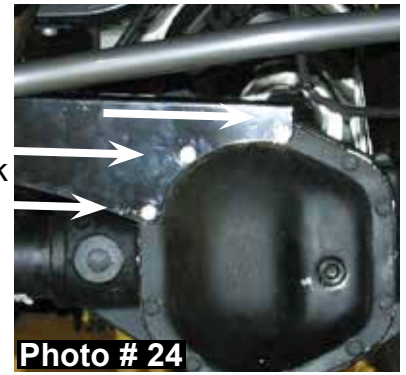


27. Disconnect the OEM rear sway bar end links using a 18mm socket. Relocate the OEM rear sway bar end links to the front of the vehicle & install using the OEM hardware saved from Step # 4. **Note:** Double disconnect front sway bar end links are available seperately (Part # SBE126).
28. Disconnect the ABS line from the frame & disconnect the brake line from the frame. (See Photo # 18)
29. Lower the differential & remove the OEM rear coil springs.
30. Place the new Skyjacker rear track bar relocation bracket over the OEM bracket on the axle. With the bracket seated flush, clamp the bracket in place, mark with a center punch, & drill the new center mounting holes using a 15/32" drill bit. (See Photo # 19)
31. Install the supplied 7/16" x 1" fine thread bolt, washer, & nut. (See Photo # 20)
32. It will be necessary to drill through the driver side bottom of the OEM bracket & through the new Skyjacker bracket. Drill using a 17/32" drill bit. Once drilled, install the supplied 1/2" x 1 1/4" fine thread bolt, washer, & nut. Install the 9/16" x 3 1/2" bolt, washers, & nut at the bottom location being sure to use the supplied crush sleeve. (See Arrow in Photo # 21)
33. Remove the three upper left differential cover bolts. (See Photo # 22)
34. Attach the new track bar brace to the differential using the 5/16 x 1" coarse thread bolts. **Do not tighten at this time.** The end of the bracket should be between the Skyjacker track bar bracket & the coil spring. Use the thick, gold plated 5/16" washer between the bracket & the differential cover. Use a 5/16" lock washer under the head of each bolt. (See Photo # 23 & # 24) **Do not tighten at this time.**





35. Attach the brace to the front side of the Skyjacker track bar bracket between the bracket & the coil spring. **Do not tighten at this time.** (See Photo # 25)
36. Torque the 5/16" bolts at the differential & the 14mm bolt on the track bar to OEM specifications.
37. Install the new Skyjacker rear coil springs. **Note:** Be sure to re-use the upper OEM rubber isolator pad.
38. Attach the new Skyjacker rear bump stop spacers to the OEM location on the axle using the 5/16" x 1" fine thread bolts, washers, & nuts. (See Photo # 26) **Note:** Be sure to install the bump stop spacer so that the angled end is towards the rear of the vehicle.
39. Raise the differential in order to load the rear coil springs & install the new Skyjacker sway bar end links using the supplied steel sleeves. Attach using the 1/2" x 2 1/2" button head bolts & nuts. **Note:** If using an OEM wheel, the upper end link bolt will need to be installed from the outside in for wheel clearance. Use the large USS washer under the head the bolts & the SAE washer under the nuts. (See Photo # 26)
40. Attach the new Skyjacker brake line brackets to the frame using the OEM hardware. Attach the OEM brake line to the new brackets using the supplied 1/4" x 1" fine thread bolts, washers, & nuts. (See Photo # 27)
41. Install the new Skyjacker rear shocks. (See Photo # 28)
42. Install the rear tires / wheels & lower the vehicle to the ground.



**Final Notes:**

- After the installation is complete, double check that all nuts & bolts are tight. Refer to the following chart for the proper torque specifications. (Do not retighten the nuts & bolts where thread lock compound was used.)
- With the vehicle placed on the ground, cycle the steering lock to lock & inspect the steering, suspension, brake lines, front & rear drivelines, fuel lines, & wiring harnesses for proper operation, tightness, & adequate clearance.
- Have the headlights readjusted to the proper settings.
- Have a qualified alignment center align the vehicle to the OEM specifications.
- After the first 100 miles, check all hardware for the proper torque & periodically thereafter.

<b><u>TORQUE SPECIFICATIONS</u></b>					
<b><u>INCH SYSTEM</u></b>			<b><u>METRIC SYSTEM</u></b>		
<b>Bolt Size</b>	<b>Grade 5</b>	<b>Grade 8</b>	<b>Bolt Size</b>	<b>Class 8.8</b>	<b>Class 10.9</b>
5/16	15 FT LB	20 FT LB	6MM	5 FT LB	9 FT LB
3/8	30 FT LB	35 FT LB	8MM	18 FT LB	23 FT LB
7/16	45 FT LB	60 FT LB	10MM	32 FT LB	45 FT LB
1/2	65 FT LB	90 FT LB	12MM	55 FT LB	75 FT LB
9/16	95 FT LB	130 FTLB	14MM	85 FT LB	120 FT LB
5/8	135 FT LB	175 FT LB	16MM	130 FT LB	165 FT LB
3/4	185 FT LB	280 FT LB	18MM	170 FT LB	240 FT LB

- The above specifications are not to be used when the bolt is being installed with a bushing.

**Seat Belts Save Lives, Please Wear Your Seat Belt.**