

# **HMS**

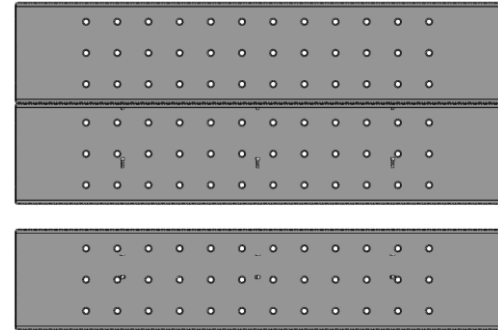
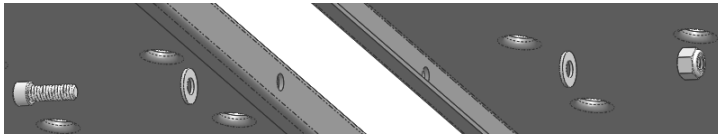
## **KARGO MASTER SAFARI**

### **55070 Installation Instructions**

**\*\*DO NOT TIGHTEN ANY BOLTS UNTIL ALL BOLTS ARE INSTALLED\*\***

#### **Step 1**

- Bolt each mid panel (55070-10-001) to one another using six 1/4" x 1" socket head cap screws, twelve 1/4" low flat washers and six 1/4" NYLOC nuts.
- Be sure to have the top of the panels all in line with one another.

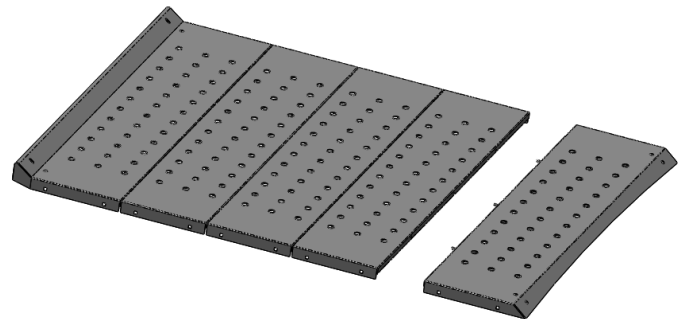


#### **Step 2**

- Bolt one mid panel to rear panel (55070-11-001) using three 1/4" x 1" socket head cap screws, six 1/4" low flat washers and three 1/4" NYLOC nuts.

#### **Step 3**

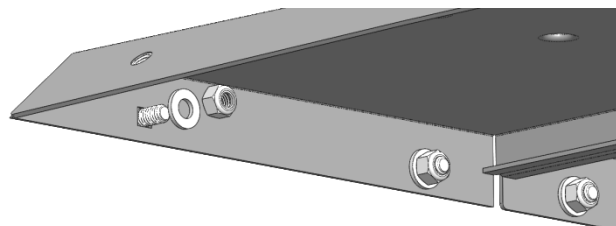
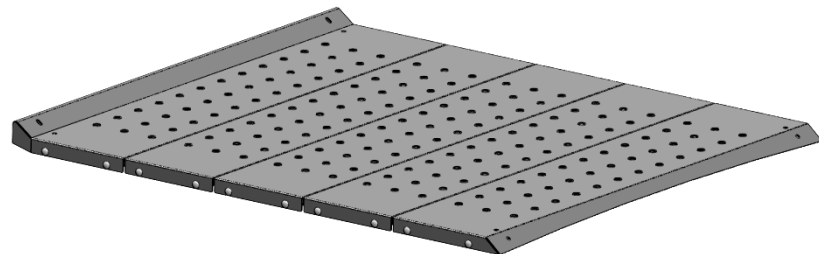
- Bolt other open ended mid panel to the front (55070-12-001) panel using three 1/4" x 1" socket head cap screws, six 1/4" low flat washers and three 1/4" NYLOC nuts.



#### **Step 4**

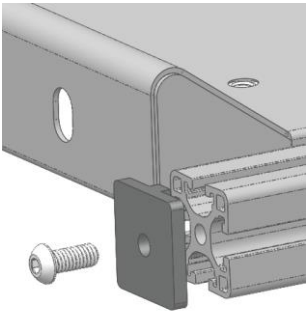
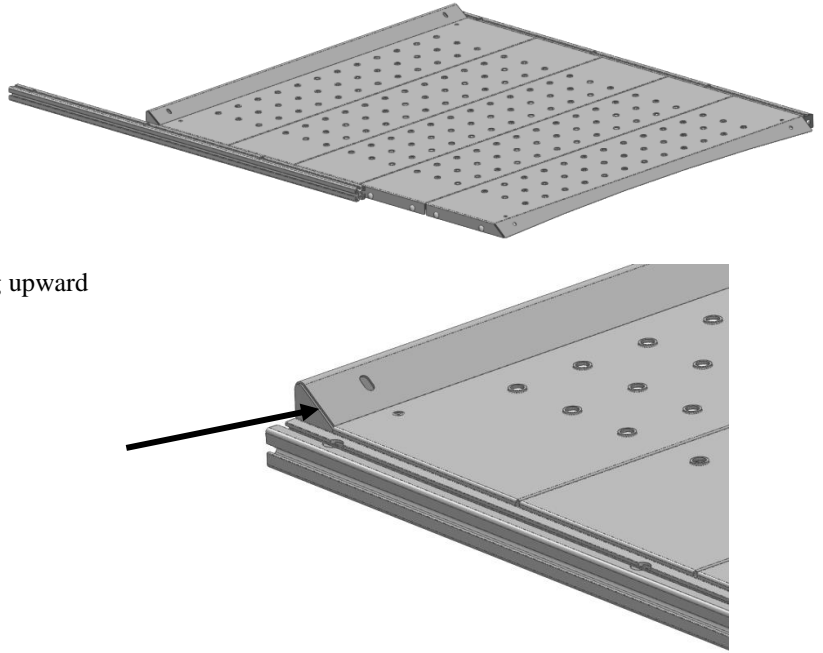
- Bolt twenty 5/16" carriage bolts down both sides of platform previously built. (10 each side) Bolt together with 5/16" flat washer and 5/16" NYLOC underneath platforms.

**\*\*HAND TIGHTEN ONLY**



### Step 5

- Slide extrusion (55070-10-003) down each side of platform while picking up each carriage bolt previously installed.
- Be sure to have hole that is 3" from the end of the extrusion to the rear of the platform. (see picture)
- Be sure to have the large holes in the extrusion facing upward

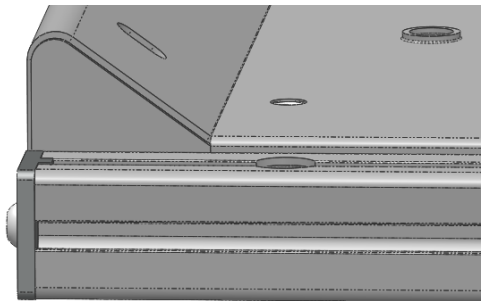


### Step 6

- Bolt end cap to the rear of the extrusion using a 5/16" x 3/4" button head screw.
- Repeat on both sides

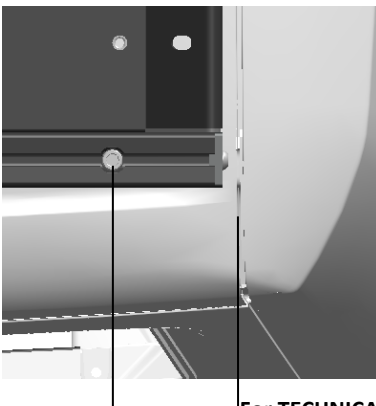
### Step 7

- Position the rear of extrusion and end cap assembly flush with the back of the rear panel.
- Tighten all carriage bolts down the length of the extrusion.
- Repeat on both sides.



### Step 8

- Place platform on roof of JEEP and center along the width. The center of the rear hole in the extrusion should be 3 5/8" from the body line in the rear of the JEEP.
- Use the through holes in the extrusion to locate where you need to drill through the roof of the JEEP.
- Drill four .390" holes into the roof of the JEEP.
- The hole closest to the front of the vehicle should line up with the hole in the roll bar inside the rear door.



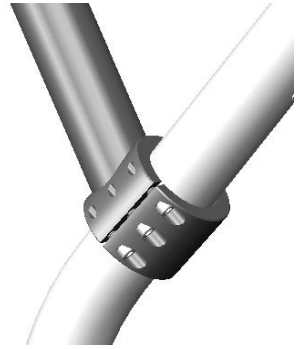
**\*\* BEFORE DRILLING, BE SURE TO CHECK FRONT MOUNT LOCATIONS LINE UP WITH THE HOLE IN THE ROLL BAR\*\***



### Step 9

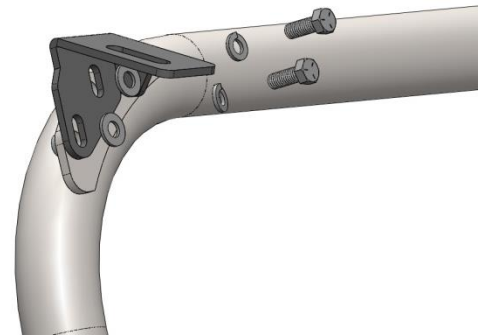
- From inside of JEEP, bolt the rear support hoop (55070-20) to the roll bar in the rear of the JEEP. Use twelve 5/16"-18 x 7/8" socket head cap screws and the clamp covers to secure around the roll bar.

\*picture shown without outside shell of JEEP



### Step 10

- On the Passenger side, bolt support bracket (55070-00-003) to support hoop using two 3/8" x 1" hex head cap screws, two 3/8" lock washers and two 3/8" NYLOC nuts.
- Repeat on driver side using the mirrored support bracket (55070-00-003M)

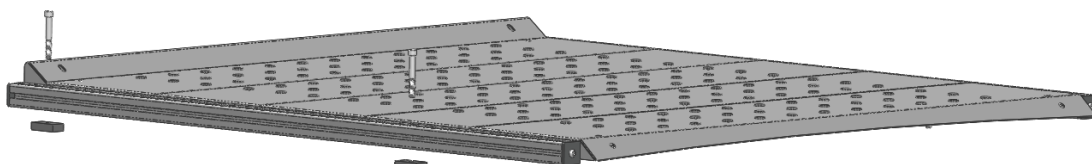
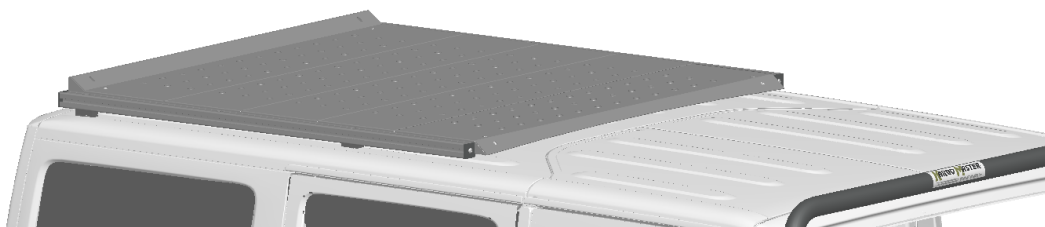


### Step 11

- Near the front holes drilled in the roof, bolt support bracket (55070-00-002) through an existing hole in the roll bar.
- Be sure to have the clamp bends to the inside of the tube.
- Repeat on drivers side.

### Step 12

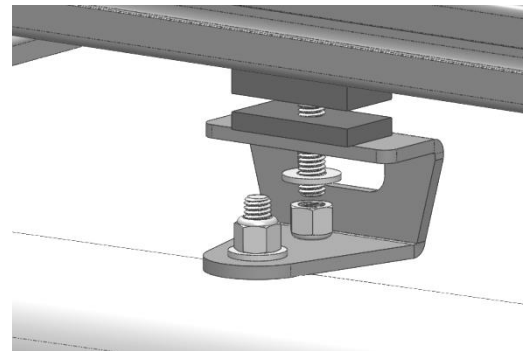
- Lift platform and place rubber spacers on both sides where the holes are drilled in the roof. In the rear place a 1/2" thick spacer and in the front place a 3/8" thick spacer.
- Drop 3/8" x 2 3/4" socket head cap screw through extrusion, spacers and roof of Jeep



### Step 13

- On the inside of the Jeep place 1/4" spacer in between the roof and front support (55070-00-002) that was installed in step 11.
- Bolt platform to roof using 3/8" socket head from previous step and a 3/8" flat washer and a 3/8" NYLOC nut.
- Repeat on both sides in the front and the rear.

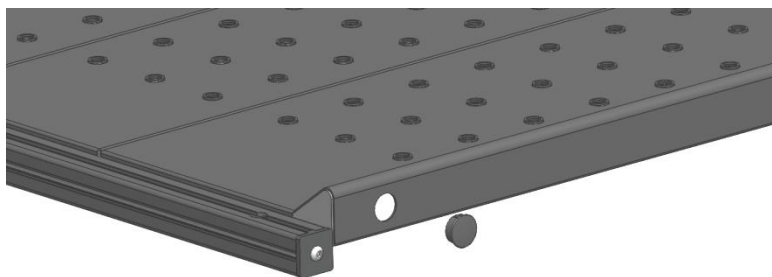
\*Roof not shown for simplicity



Front mount shown

### Step 14

- Push plastic caps (2) into the 1" holes in the rear of the platform.



### Step 15

- Go back through and tighten all bolts.

Your installation is now complete.

