



# DESTROYER SHORTY BUMPER INSTALL



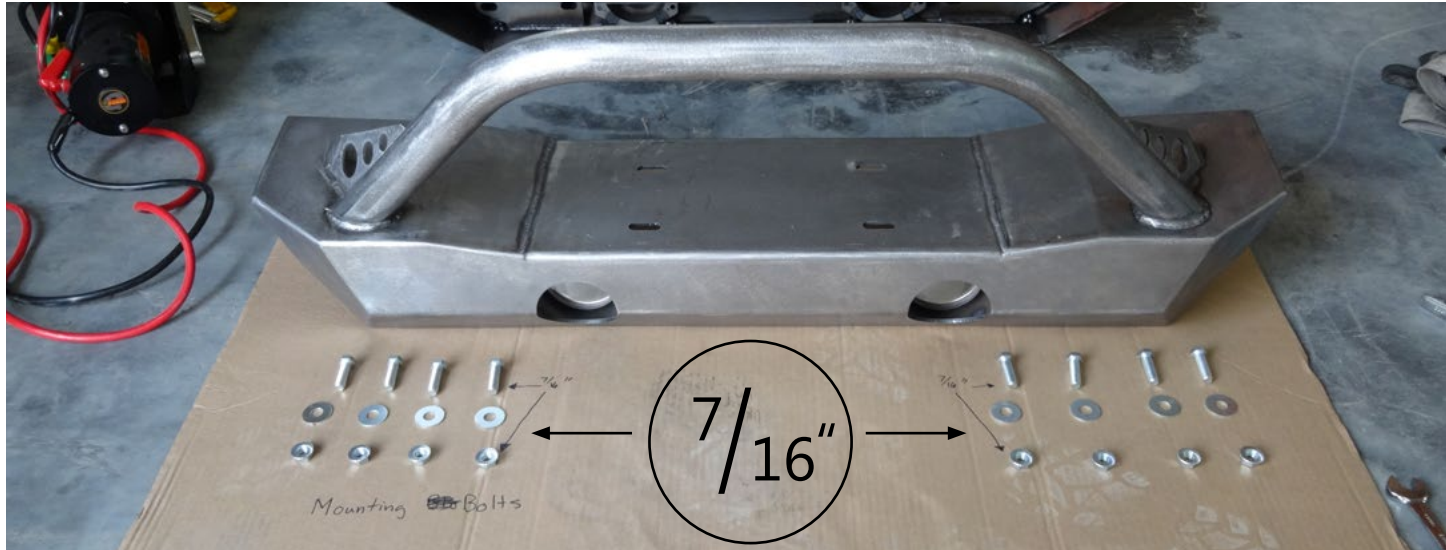
## **STEP 1:** GATHER YOUR TOOLS AND LAY OUT YOUR PARTS...

### **Tools Required:**

- Utility knife
- 11/16" Deep socket
- Ratchet
- 11/16" Crescent wrench
- Ratchet Extension
- 1/4" socket
- Electrical tape

### **Hardware Provided:**

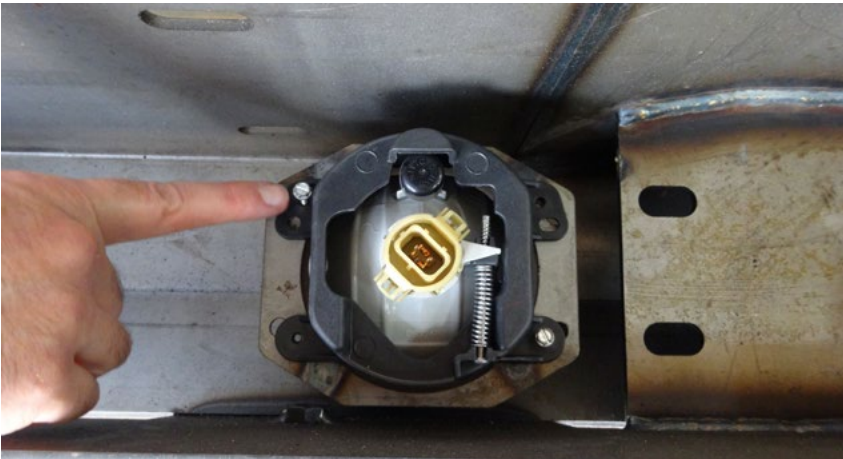
- Eight (7/16"-14 x 1.25") mounting bolts
- Eight (7/16"-14) flange nuts
- Four (7/16") washers
- Eight (#8 Size) screws





## **STEP 2 :**

TURN THE BUMPER AWAY FROM YOU, AND INSERT THE FACTORY FOGLIGHTS.



## **STEP 3 :**

LINE UP THE HOLES AND ATTACH THE LIGHTS WITH THE (8) PROVIDED SELF-TAPPING #8 HEX HEAD SCREWS.



## **STEP 4 :**

START BY INSERTING THE TOP CORNER BOLTS ON EACH SIDE, LEAVING THEM HANGING IN PLACE



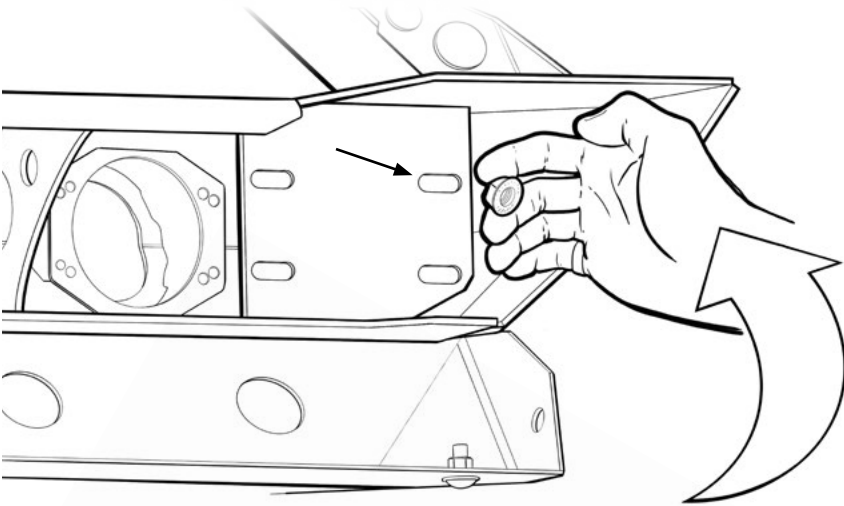
## **STEP 5 :**

LOCATE THE MOUNTING HOLES AND LIFT UP THE BUMPER TO ALIGN THE MOUNTING HOLES ON THE BUMPER AND THE VEHICLE FRAME.



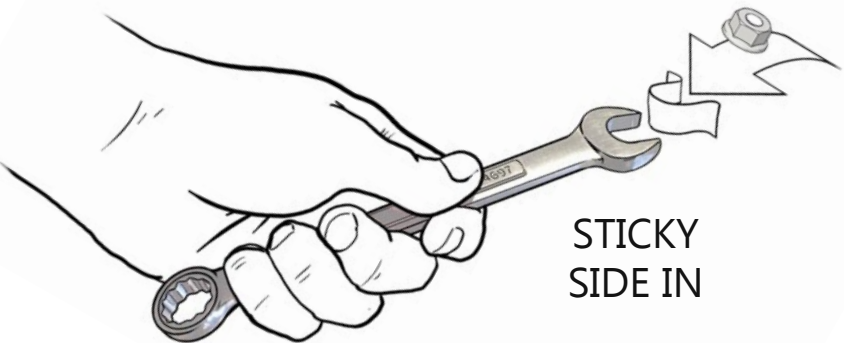
## **STEP 6 :**

GENTLY SLIDE THE BUMPER OVER THE FRAME MOUNTS AND SLOWLY MOVE IT FORWARD, LETTING IT REST ON TOP OF THE FRAME.



## **STEP 7 :**

HOLD A NUT BETWEEN YOUR FINGERS AND "HOOK" YOUR HAND, REACHING BEHIND THE MOUNT PLATE TO START THE OUTSIDE CORNER BOLTS.



## **STEP 8 :**

GRAB A PIECE OF TAPE AND STICK IT TO THE INSIDE OF THE WRENCH, TO ENSURE THE NUT FITS SNUGLY AND DOES NOT FALL OUT.



## **STEP 9 :**

PLACE A NUT INTO THE WRENCH, THEN PLACE THE WRENCH INTO THE ACCESS SLOT. ALIGN THE NUT WITH THE TOP CORNER BOLT.



## **STEP 10 :**

ALIGN THE NUT WITH TOP CORNER BOLT YOU INSERTED EARLIER, THEN HAND-TIGHTEN IT.

REPEAT STEPS 7+8 ON THE OPPOSITE CORNER BOLT.



## **STEP 11 :**

- CONTINUE TO USE THE TAPE+WRENCH TO HAND-TIGHTEN THE REST OF THE MOUNTING BOLTS.

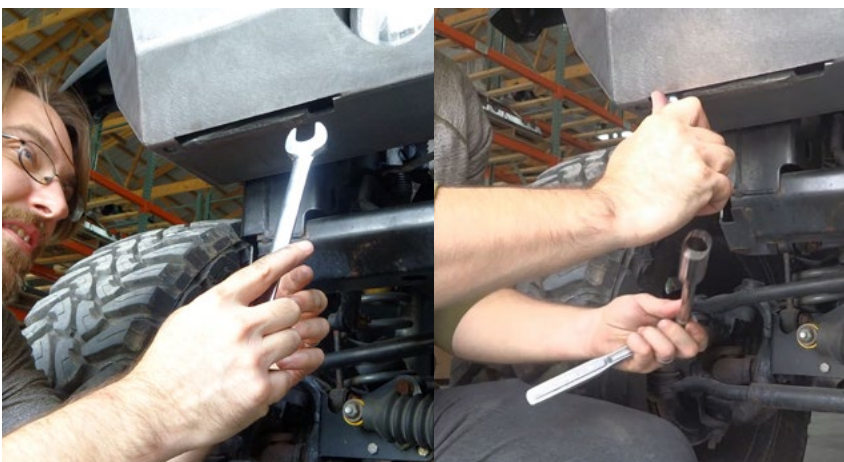
- REACH YOUR HAND THROUGH THE BACK OPENINGS TO FEEL FOR THE BOLTS.



## **STEP 12 :**

- MAKE SURE THE BUMPER IS CENTERED, WITH THE OUTER EDGES MATCHING UP TO THE GRILLE.

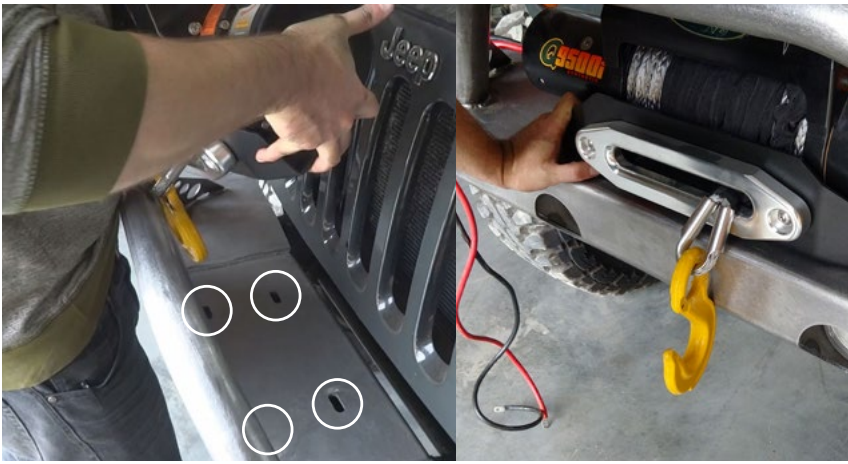
-VERTICAL ADJUSTMENTS CAN BE DONE AT THIS TIME, WITH ABOUT 1" OF TRAVEL AVAILABLE



## **STEP 13 :**

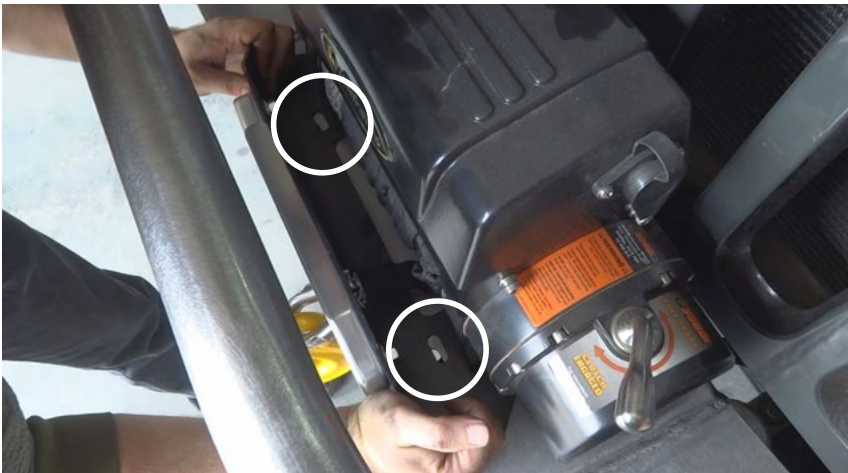
- ONCE ALL THE BOLTS ARE HAND-TIGHT, THE TAPE CAN BE REMOVED AND THE WRENCH AND SOCKET CAN BE USED TO TIGHTEN THEM THE REST OF THE WAY.

\*IF YOU'RE NOT USING A WINCH, SKIP STEPS 14 - 16.



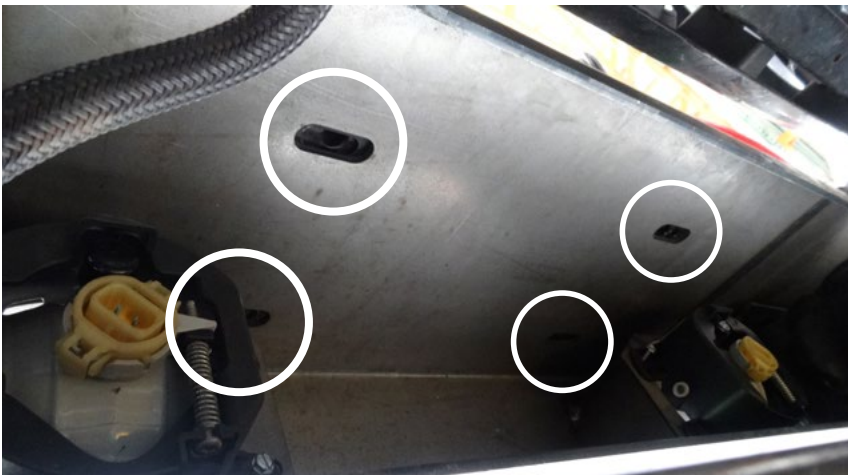
## **STEP 14 :**

- PLACE THE WINCH AND FAIRLEAD OVER THE BULLGUARD AND DOWN ONTO THE BUMPER.



## **STEP 15 :**

- LINE UP THE HOLES IN THE WINCH WITH THE SLOTTED HOLES ON TOP OF THE BUMPER. YOU SHOULD BE ABLE TO SEE DIRECTLY THROUGH THE HOLES.



## **STEP 16 :**

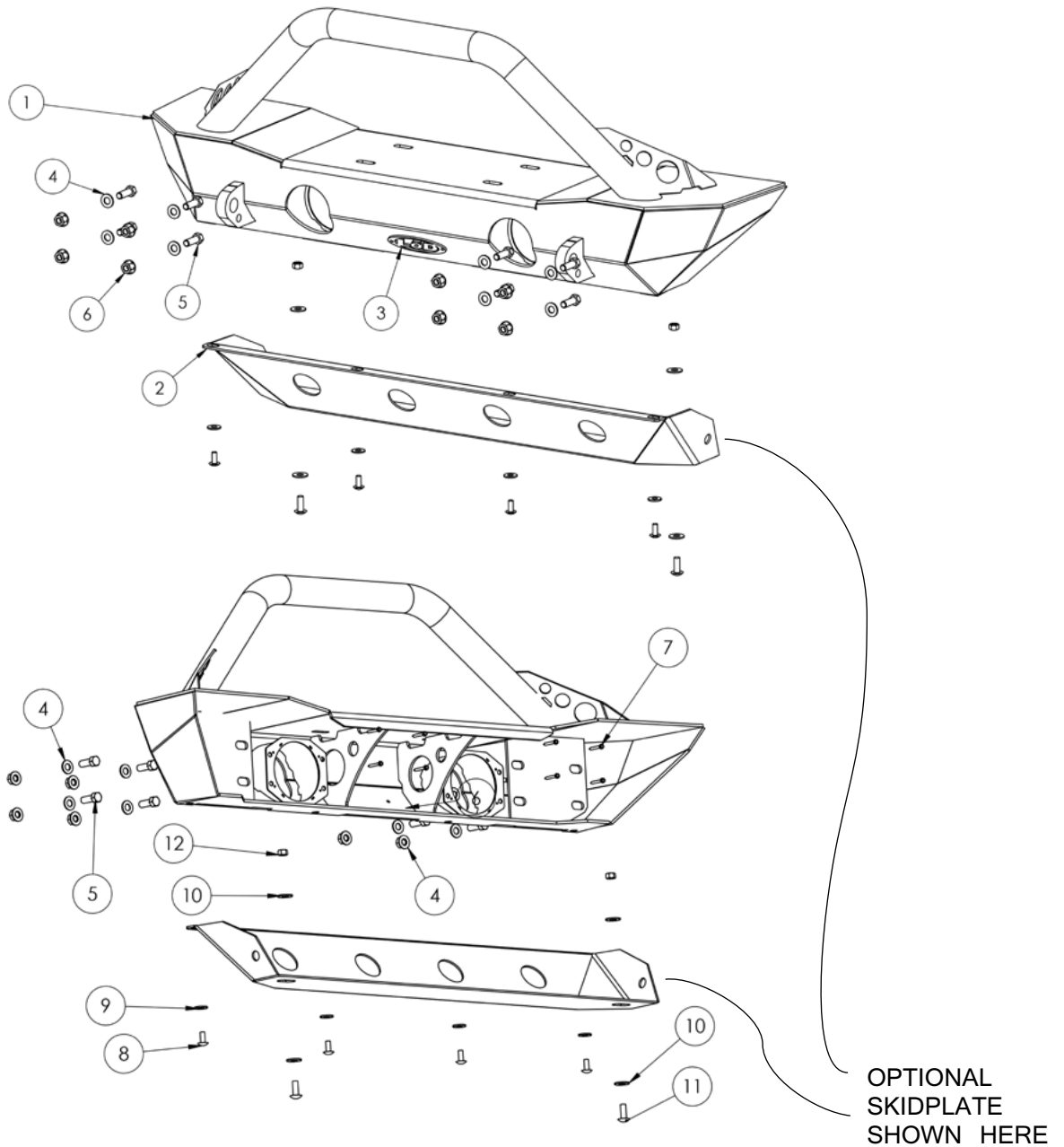
- INSERT THE FOUR WINCH MOUNT BOLTS INTO THE OPENINGS AND TIGHTEN THEM DOWN TO SECURE YOUR WINCH IN PLACE.



## **STEP 17 :**

- THIS CONCLUDES THE DESTROYER SERIES SHORTY FRONT BUMPER INSTALLATION, YOUR PRODUCT SHOULD BE MOUNTED AND READY TO USE.

- FOR SKIDPLATE USERS, FOLLOW ACCESSORY DIRECTIONS.



### Fabricated Assemblies List

ITEM NO.	PART NUMBER	DESCRIPTION	QTY.
1	4JFB1001-01	SHORTY FRONT BUMPER	1
2	4JKS1002	DESTROYER SKID PLATE	1

### Hardware Kit List

ITEM NO.	PART NUMBER	DESCRIPTION	QTY.
3	LOD logo	Logo Plate	1
4	Preferred Narrow FW 0.4375	7/16" Washer	8
5	HBOLT 0.4375-14x1.25x1.125-N	7/16" Hex Bolt	8
6	FNUT 0.4375-14-D-N	7/16" Flange Nut	8
7	hex tapping screw_ai	#8 Self Tap Screw	8
8	HB 0.3125x1	5/16" Buttonhead Bolts	4
9	Preferred Wide FW 0.3125	5/16" Washers	4
10	Preferred Wide FW 0.375	3/8" Washers	4
11	HB 0.375	3/8" Bolts	2