

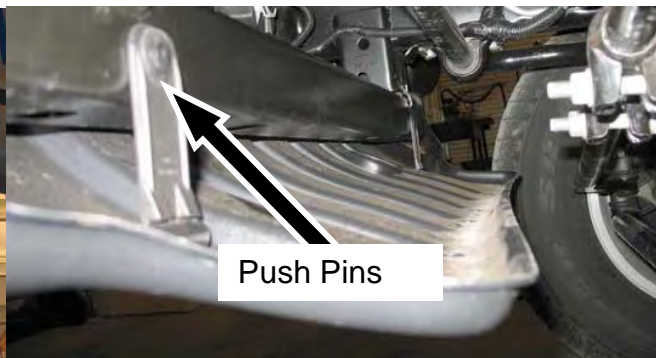
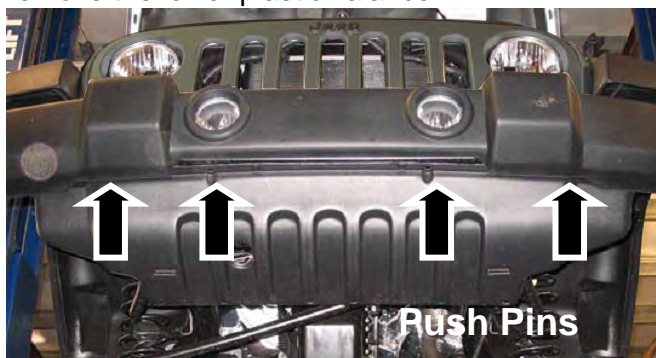
# Installation Instructions

Description: BUMPER FOR JEEP WRANGLER JK 2007-2016

#	Description	Qty	Specification	#	Description	Qty	Specification
1	Front Bumper	1		6	Flat Washer	8	M4
2	D-Ring	2		7	Clip Nut	8	M4
3	Flat Washer	8	M10	8	Phillips-Head Bolt	8	M4x15
4	Hex Nut	8	M10	9	Spring Washer	8	M4
5	Spring Washer	8	M10				

## Installation Steps:

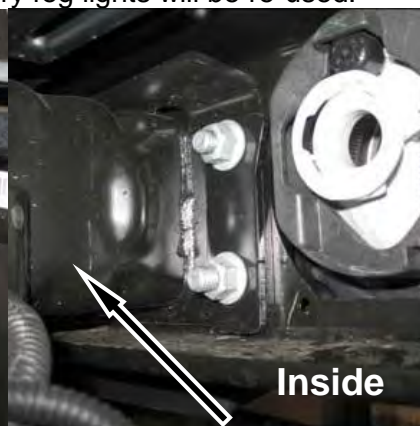
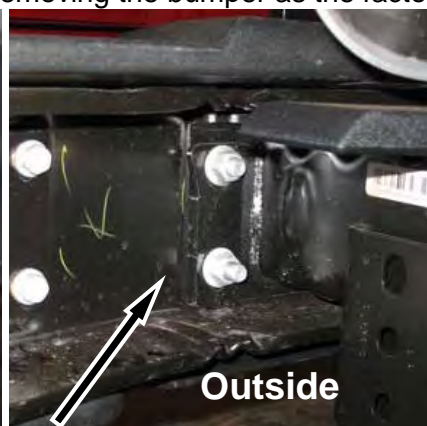
1. Use a flat head screwdriver to remove the (4) push pins and (2) push pins on back side and then remove the lower plastic valance.



2. With the valance removed, disconnect the fog lights wiring harnesses from fog lights (if equipped) and remove wiring harness and clips from lower bumper.



3. Use an 18mm socket to remove the (8) nuts and spacer plates holding the bumper to the front of the frame rails. Be careful when removing the bumper as the factory fog lights will be re-used.



Factory bumper

Frame rail

4. Remove the last two push pins on the upper filler panel and then remove the upper filler panel.



**Note:** Remove eight screws and two fog lights from front bumper. Secure your fog lights to your new bumper using the supplied (4) M4x15 Phillips-Head bolts, (4) M4 clip nuts, (4) M4 flat washers and (4) M4 spring washers, same on opposite side.



5. Slide the Bumper onto the frame rails to install the screws back onto the bumper and secure using the supplied hardware: (8) M10 hex nuts, (8) M10 flat washers and (8) M10 spring washers. Level and adjust the bumper and then tighten all hardware at this time. It is best to use two people when installing the bumper.



6. Reconnect the wiring harnesses. Test before you drive.  
7. Do periodic inspections of the installation to make sure that all hardware is secure and tight.



**Exploded view**

Secure the bumper onto vehicle  
using the washers and locknuts.  
(Fig. A & B)

Fig. A

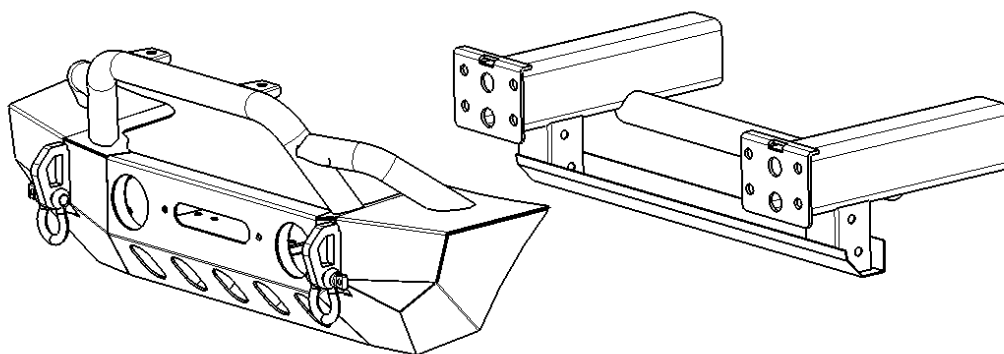


Fig. B

