



SYNERGY MFG. 870 INDUSTRIAL WAY, SAN LUIS OBISPO, CA (805) 242-0397

## PPM-8012-13 JK WELD ON FRONT TRACK BAR BRACKET, STOCK TUBE

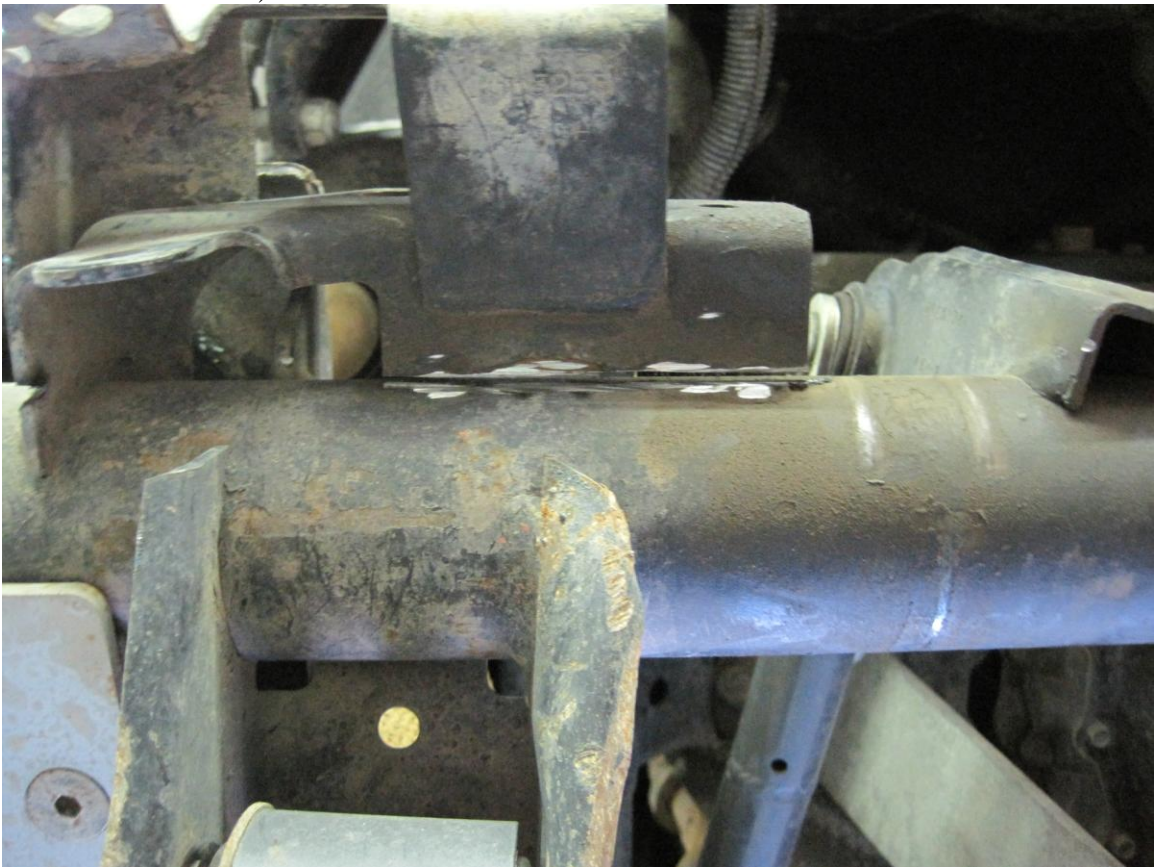
Version 2

### GENERAL NOTES:

- These instructions are also available on our website; [www.synergymfg.com](http://www.synergymfg.com). Check the website before you begin for any updated instructions and additional photos for your reference.
  - This track bar relocation bracket moves the track bar mounting location up by 3". This will give you the correct track bar mounting location to use when flipping the draglink to the top of the knuckle or when using the Reid Racing knuckles.
  - The installation of this bracket requires the complete removal of the stock track bar bracket with a sawz-all and cut off wheel or plasma cutter or oxy-acetylene torch. The new bracket must be welded to the axle tube. An experienced fabricator/welder is recommended to properly install this bracket.
  - A minimum of 3" tall bumper stop spacers are required to prevent the track bar relocation bracket from contacting the frame when the suspension is at full bump.
1. Remove the track bar, steering stabilizer sway bar links and tie rod from the front axle.
  2. Cut off the factory track bar bracket from the axle tube.
    - a) Cut the top weld with a cut off wheel



b) Cut the bottom welds with a cut off wheel



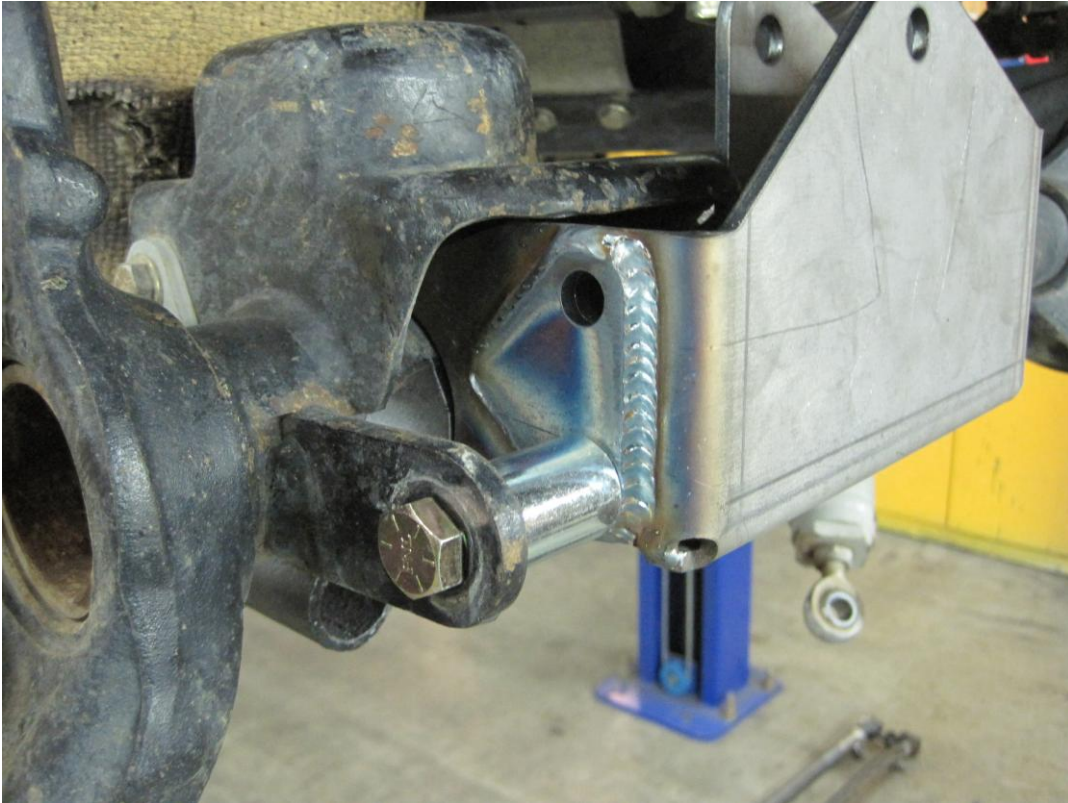
c) Cut the side weld, a saws all works well for this cut



d) Remove the track bar bracket and grind smooth



3. Locate the new weld on track bar bracket using a 1 1/2" long spacer between the lower side hole of the track bar bracket and the stock sway bar tab. This spacer is not provided, you can also use your stock sway bar link as a spacer.

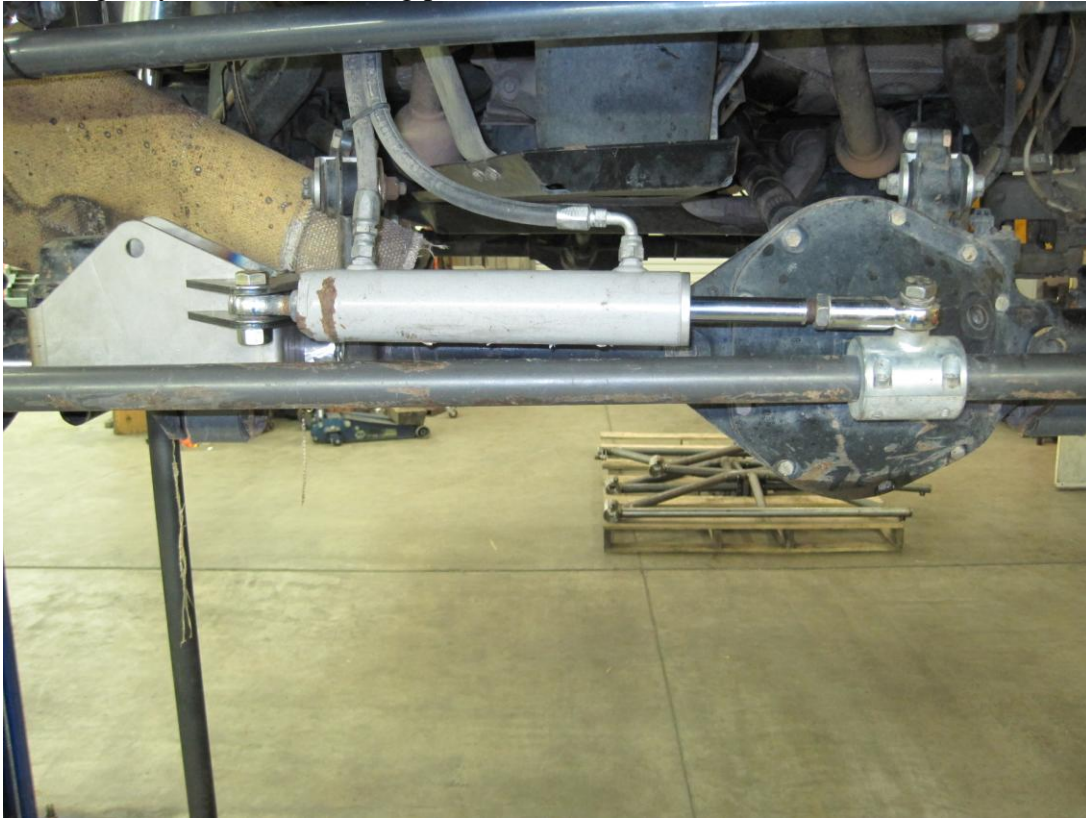


4. You will be welding both sides, top and bottom of the new track bar bracket so make sure the paint is removed from those areas.
5. The bracket should be at the same angle as the diff spreader holes. Zero against this mounting surface and match the track bar bracket to the same angle.



6. If you are using the supplied tabs to mount a hydraulic assist steering ram, follow the instructions below:
  - a) If you are using Reid Racing JK high steer knuckles, position the ram tabs as shown below.

This will give you a ram mounting position shown below.



b) If you are using the stock JK steering knuckles, position the ram tabs as shown below.



7. If you are mounting a steering stabilizer, mount the steering stabilizer bracket as shown below. A few different mounting locations are shown; it will be up to you to determine where exactly you want to mount the bracket. If you are using a Fox steering stabilizer, you will need to use one wide (7/16) and one narrow (5/16) bearing spacer.

a) This is shown with the stock JK steering knuckles



b) This is one option if using Reid Racing high steer knuckles



c) Another option if using Reid Racing high steer knuckles



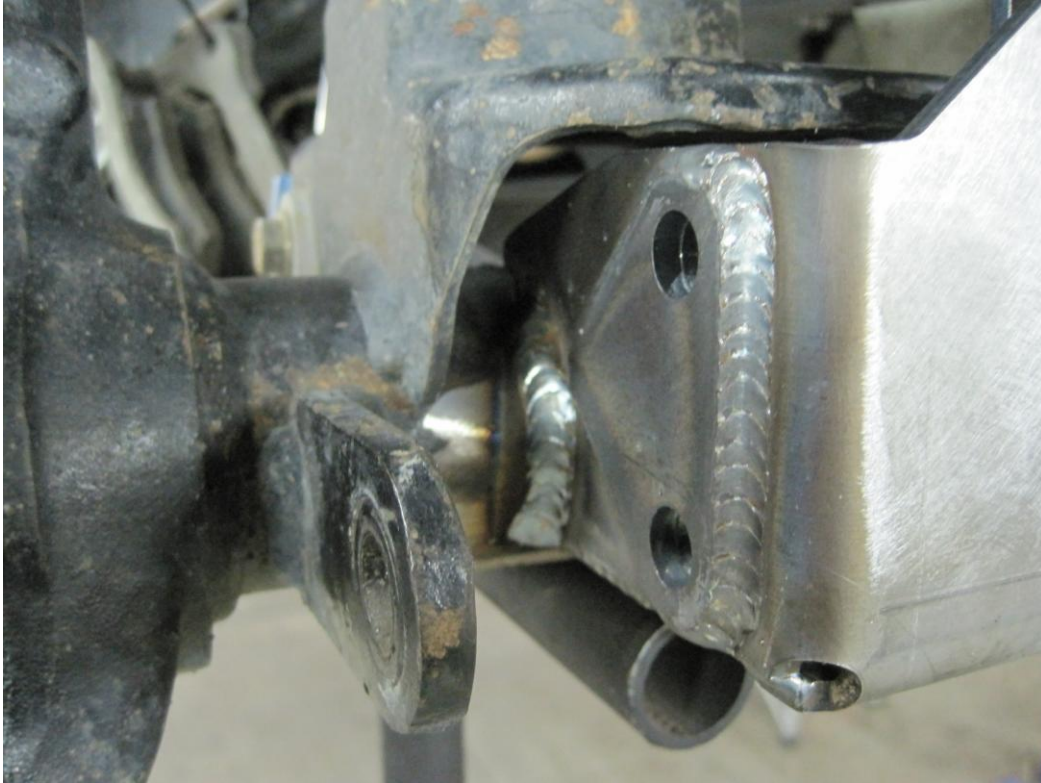
8. Or simply bolt on a PPM-8007 stabilizer bracket as shown below.



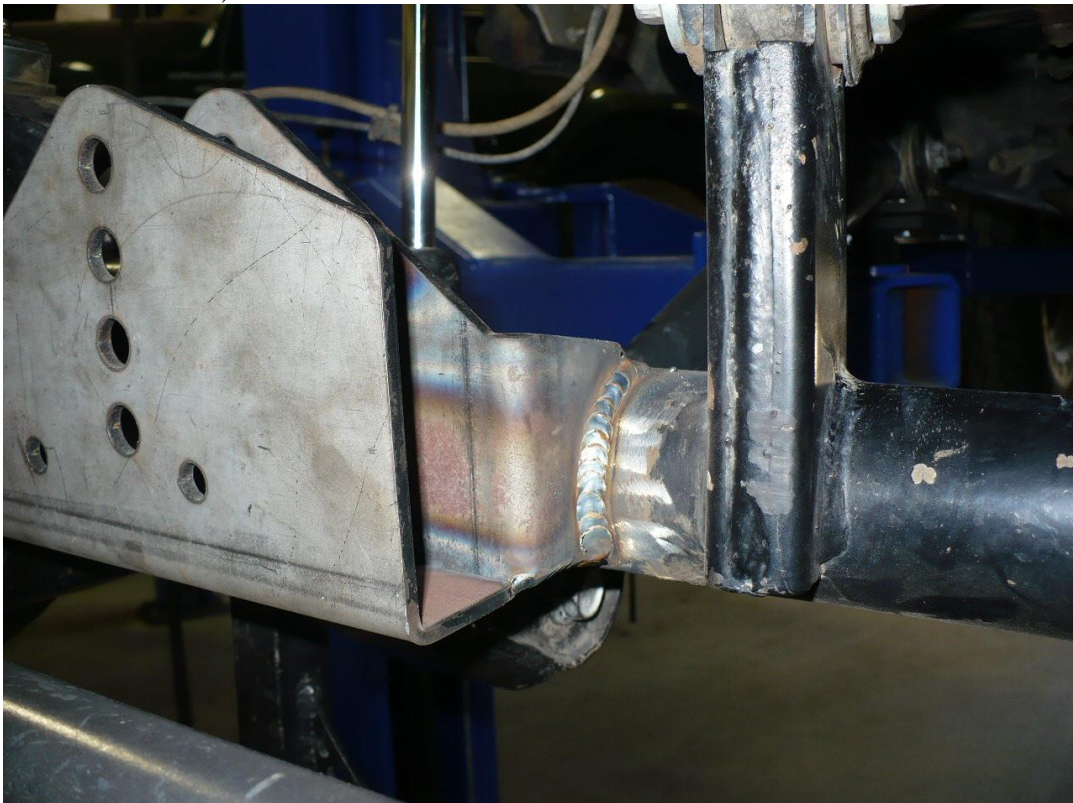
9. When you have determined your steering stabilizer or hydro ram bracket position, remove the track bar bracket and weld the tabs to the track bar bracket on a welding bench.



10. Make sure all of the paint is removed from the areas you will be welding the track bar bracket to the frame.
11. Reposition the track bar bracket to the axle tube and weld into place.
  - a) Weld the outside



- b) Weld the inside



c) Weld the bottom



d) Weld the top



12. Clean the welds and paint the track bar bracket and axle tube.
13. Attach the track bar and steering stabilizer or hydro ram.
14. If you want to relocate the sway bar tab to the upper mounting hole in the track bar bracket you will need to weld on the driver side sway bar relocation bracket. This is required if you are using a sway bar disconnect system with pins. Using a 1 1/2" long spacer or sway bar link, bolt the sway bar relocation bracket to the stock sway bar tab, then weld on.



Installation is Complete