



Barricade Adventure HD Front Bumper w/ LED Fog Lights (07-18 JK)

TOOLS REQUIRED

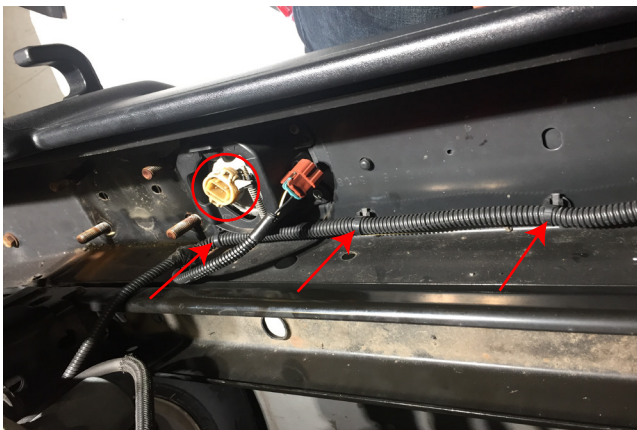
Basic Hand Tools



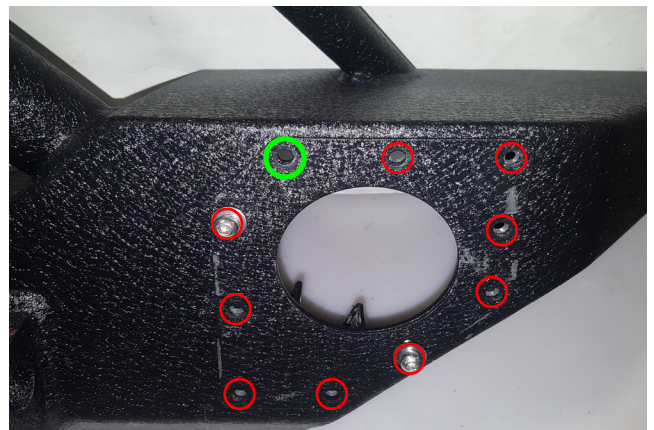
STEP 1 // Remove the (6) plastic push pins securing the factory splash shield to the vehicle. (4) Across the front edge, (2) on the rear edge.



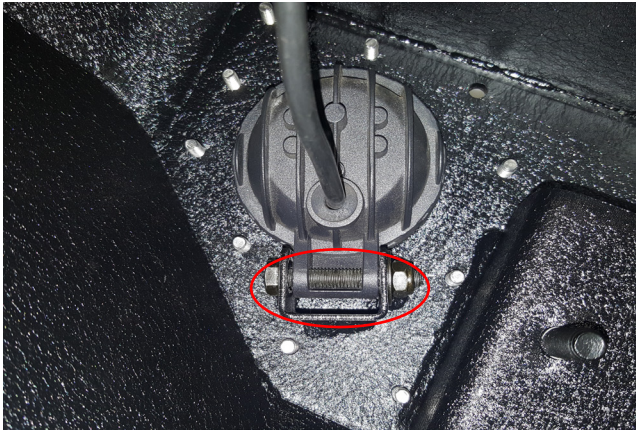
STEP 3 // From under the vehicle, access and remove the (8) 18mm nuts securing the factory bumper to the vehicle.



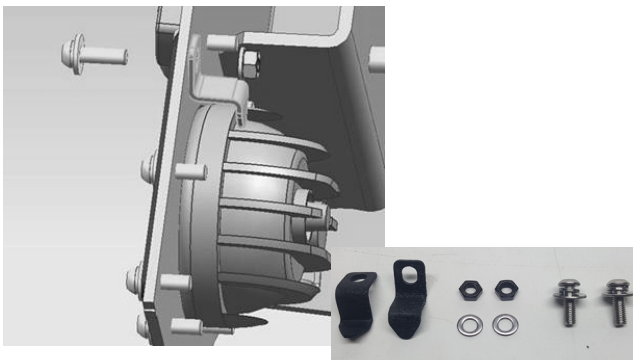
STEP 2 // From under the vehicle, remove the factory fog light connectors and free the fog light wiring loom from the bumper.



STEP 4 // Install the fog light bezels to the bumper by using the (18) M6x1.0x20mm Bolts, lock washers, and flat washers. **Note: Leave the hole highlighted in green empty until step 6.



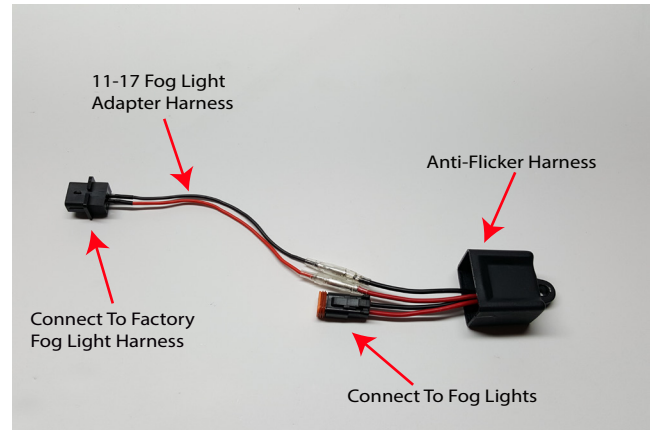
STEP 5 // Install the (2) Fog Lights using the (2) M8x1.25x50mm bolts, (4) M8 flat washers, and (2) M8 lock nuts.



STEP 6 // Insert the (1) M6 bolt through the empty hole in the fog light bezel plate. Attach the fog light hook clip around the fog light, and secure it in place with (1) M6 hex nut, and flat washer. Repeat the process on both sides.



STEP 7 // Install the bumper by using the (4) M10 nuts, (4) M10 x 25mm bolts, (8) lock washers, and (8) flat washers to the vehicle. Torque to 40 lb ft.



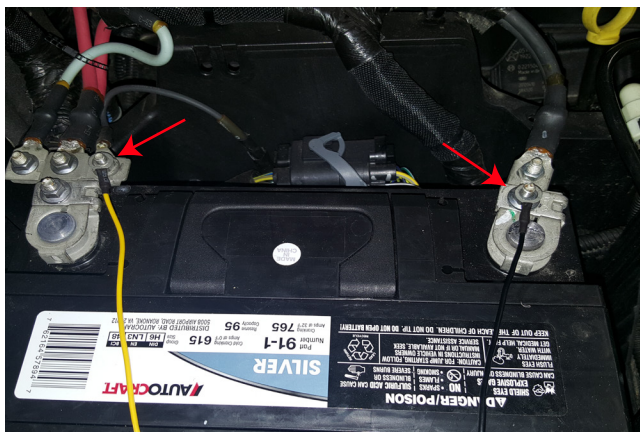
STEP 8 // Connect the anti-flicker harness to the fog light adapter harness. Connect the fog light adapter harnesses to the factory fog light wiring harnesses. Connect the fog light to the anti-flicker harness. ****Note:** There are (2) different style factory fog light connectors. Use the correct harness for your vehicle.



STEP 9 // Optional Light Bar Installation:
Begin by installing the 70mm bolt through the silver light bracket. Install the bracket to the light bar using (1) M8x1.25x60mm bolts, flat washers, lock washers and nuts for each side. Slide the light bar bracket spacer onto the 70mm bolt. Install the light bar to the bumper using the flat washer, lock washers, and nuts.

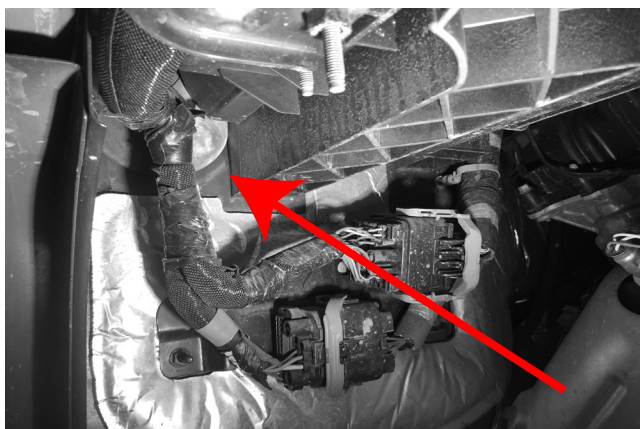


STEP 10 // Optional Light Bar Wiring:
Connect the light bar into the supplied harness. Zip tie any excess wire away from moving and/or hot engine components.



STEP 11 // Optional Light Bar Wiring:

Install the yellow 12+ volt wire to the positive battery terminal. Connect the black ground wire to the negative battery terminal. Secure any extra wire out of the way.



STEP 12 // Optional Light bar Wiring:

Route the on/off switch to the interior of the vehicle. Mount the switch in the desired location. Zip tie any extra loose wiring out of the way.

Contents:

- (1) - Front Bumper
- (2) - D Rings
- (2) - LED Fog Lights
- (2) - Anti Flicker Harnesses
- (2) - 07-10 Fog Light Adapter Harnesses
- (2) - 11-17 Fog Light Adapter Harnesses
- ** (1) - Optional LED Light bar
- ** (1) - Optional Flood Light Harness

Bumper Hardware:

- | | |
|------------------------------|----------------------------|
| (4) - M10 x 1.5 x 25mm Bolts | (20) - M6 x 1.0 x 20 Bolts |
| (8) - M10 Flat Washers | (20) - M6 Lock Washers |
| (8) - M10 Lock Washers | (22) - M6 Flat Washers |
| (4) - M10 Nuts | (2) - M6 Hex Nuts |
| (2) - M8 x 1.25 x 50mm Bolts | |
| (4) - M8 Flat Washers | |
| (2) - M8 Lock Nuts | |
| (2) - M8 Lock Washers | |
| (2) - M6 Nuts | |
| (2) - Fog Light Hook Clips | |

Light Bar Hardware:

- (2) - M8 x 1.25 x 70mm Bolts
- (2) - M8 x 1.25 x 60mm Bolts
- (4) - M8 Polished Nuts
- (4) - M8 Polished Flat Washers
- (4) - M8 Polished Lock Washers
- (2) - Brackets
- (2) - Light bar Spacers
- (4) - M5 x 0.8 x 10mm Bolts
- (1) - Allen Key

Trouble Shooting:

If the LED light stops working at any time begin by checking the fuse. If the fuse is blown, check the switch wiring. Make sure it matches the diagram on the back of the switch. The colors may not always be the same as pictured. If the light still doesn't work, ensure the plug is seated all the way, they are a tight connection.