

## 500-Series Front Bumpers

OEM plastic end caps and/or bumperettes cannot be used with any of the 500-Series Front Bumpers. On vehicles with auxiliary lights, the auxiliary lights must be relocated. You can install an Olympic 180-Aux bar or drill holes into the heavy-duty bumper for the auxiliary lights. License plate must be relocated. Olympic 4x4 Products are serviced by our factory. We provide answers to installation questions. We ship parts ASAP. Try us before the hassle of returning Olympic 4x4 Products to your retailer or mail order specialist.

**For assistance please call (800) 777-0878.**



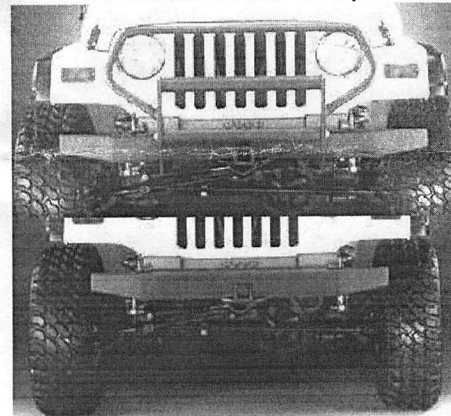
530-Rock Bumper 57"



533-Rock Receiver Bumper 57"



505- Rock bumper 50" with 180-Aux bar



533-Rock Receiver Bumper with 610-Front End Guard and 670-Brush Guard (Top)  
543-Rock Receiver Bumper 50" (Bottom)

**Contents: One of the following:**

- 505-Rock bumper 50"
- 530-Rock bumper 57"
- 533-Rock receiver bumper 57"
- 543-Rock receiver bumper 50"

**Hardware list:**

- 4 1/2" flat washers

**Tools required:**

- #55 Torx bit socket
- 1/2" or 3/8" drive ratchet wrench



Photo 1



Photo 2



- Step 1. Remove old bumper from vehicle frame using #55 Torx bit, depending on vehicle year and/or modifications, your bumper may have different mounting bolts. **Save the bumper bolts, they will be used to mount your new bumper.** See photos 1&2.

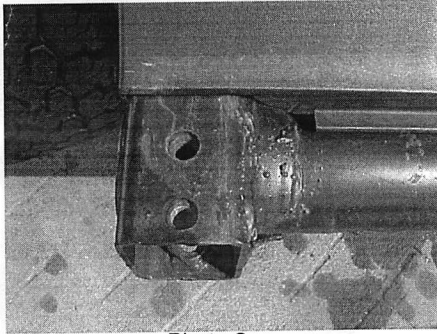


Photo 3

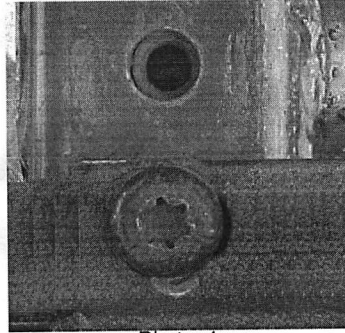


Photo 4

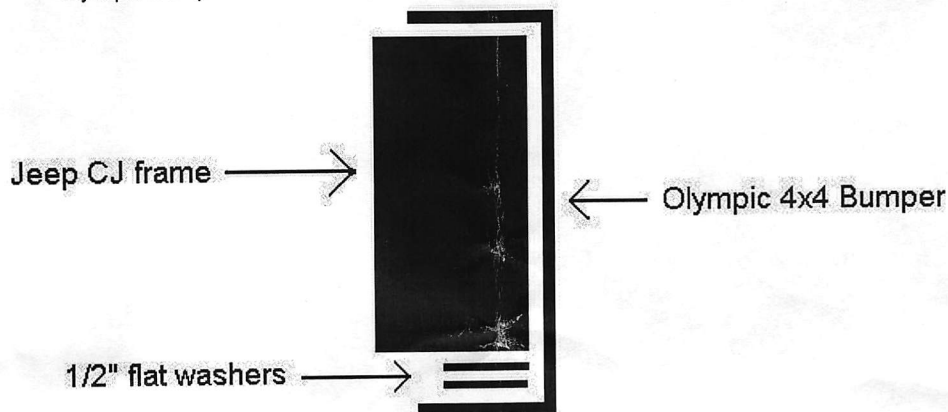
- Step 2. Slide your new bumper over the vehicle frame and line up the mounting holes in the bumper with the mounting holes in the frame. See photos 3 & 4. Photo 4 shows how the bumper mounts only through the front hole on the Wrangler.

- Step 3. Secure bumper using the Torx bit bolts you removed in step 1. See photo 4.

- Step 4. After 500 miles or first off-road trip, re-check tightness on all nuts and bolts.

**Note:** The bumpers come with mounting holes for TJ & YJ Wranglers and CJ's. The round holes are used when mounting the bumper to a CJ, and the oblong holes are used for mounting the bumper to TJ & YJ Wranglers (1988-present). The wrangler mounts to front bumper mounting holes only and does not use both holes like the OEM bumper. To re-use factory tow hooks on Wranglers install a 1/2" flat washer under tow hook before mounting tow hook over new bumper and flat washer.

**CJ owners:** The CJ frame is thinner than the Olympic bumper and you will want to slip the supplied 1/2" flat washers between the bottom of the vehicle frame and the top of the lower inside lip of the Olympic bumper.



**Note:** For getting unstuck in an off road situation, simply place your snatch strap into your receiver hitch and secure it in place with a clevis/hitch pin. You can place a receiver D ring into the receiver hitch to assist you when attaching a winch cable hook or tow strap to the bumper, simply attach the hook on the end of the cable to the back side of the receiver hitch.