



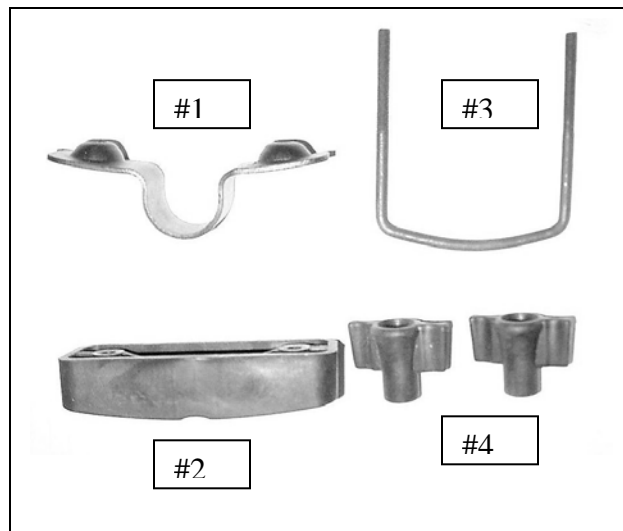
Installation Instructions

Rugged Rack

Part # 17185

NOTE: Carefully read entire instructions thoroughly before attempting to install this part.

Rugged Rack Assembling Components		Mounting Foot Hardware	
Description	Qty.	Description	Qty.
Floor slat attachment screws	25 ea.	#1. Upper Cross Bar Bracket	4 ea.
Assembly screws	8 ea.	#2. Center Cross Bar Bracket	4 ea.
Side uprights	2 ea.	#3. Lower Cross Bar Bracket	4 ea.
Front and rear uprights	2 ea.	#4. Wing Nuts	8 ea.
Floor slats	5 ea.		
Cross Members	5 ea.		



ASSEMBLING THE RACK

Step 1: On a clean smooth surface lay out the parts. (Figure 1)

Step 2: Begin the assembly process by sliding the cross member tube into the holes on the side of the uprights. (Figure 2) Be sure to turn the cross members so that the threaded holes are facing up. (Figure 3)

For Technical Support/Warranty Information please call 310-762-9944

Smittybilt, 1600 Walnut Parkway, Rancho Dominguez, CA 90220



Installation Instructions

Rugged Rack

Part # 17185

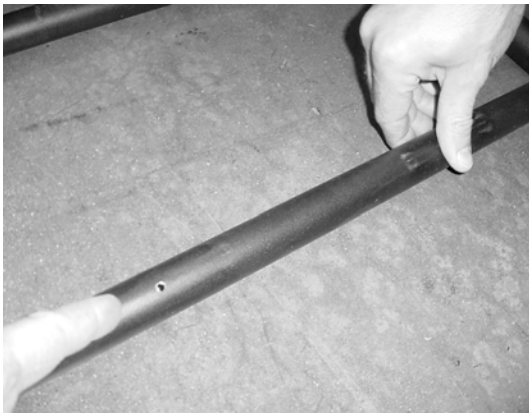
Step 3: Push the front upright into the side upright. (Figure 4) Do this step at all four corners.

Note: It may be necessary to use a rubber mallet to carefully tap parts together

(Figure 1)



(Figure 2)



(Figure 3)



(Figure 4)

Step 4: Lay the floor flat slats out over the cross members. Align the holes in the floor slats with the holes on the cross members. (Figure 5)

Step 5: Attach the floor slats to the cross members using the screws provided. (Figure 6)

For Technical Support/Warranty Information please call 310-762-9944

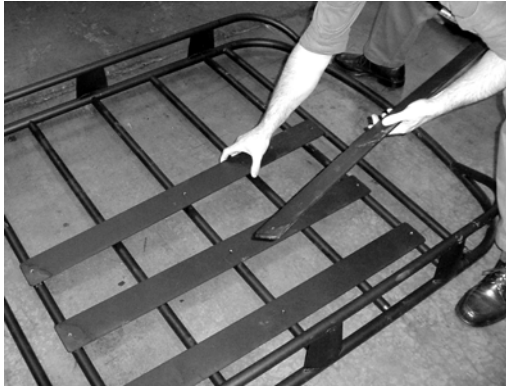
Smittybilt, 1600 Walnut Parkway, Rancho Dominguez, CA 90220



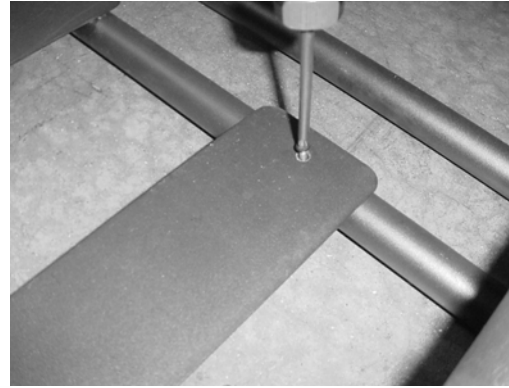
Installation Instructions

Rugged Rack

Part # 17185

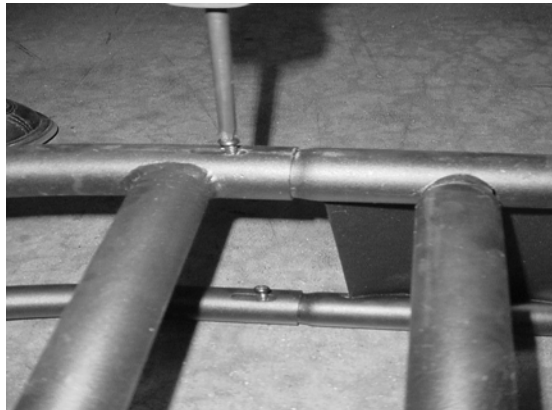


(Figure 5)



(Figure 6)

Step 6: With care, turn the rack upside down. Align the slots in the front upright with the holes in the side upright. Attach the parts using the screws provided. (Figure 7)



(Figure 7)

ATTACHING THE RUGGED RACK TO VEHICLE ROOF RACK

Note: The Rugged Rack comes complete with installation hardware. To attach the Rack your vehicle must be equipped with a roof rack and cross rails.

Step 1: Loosen the vehicles factory cross rails and move them to the furthest outside position. Place the assembled Rack onto the vehicles cross members (Figure 1)

Step 2: Align the vehicles roof rack cross rails with the outside cross member of the Rack. (Figure 2)

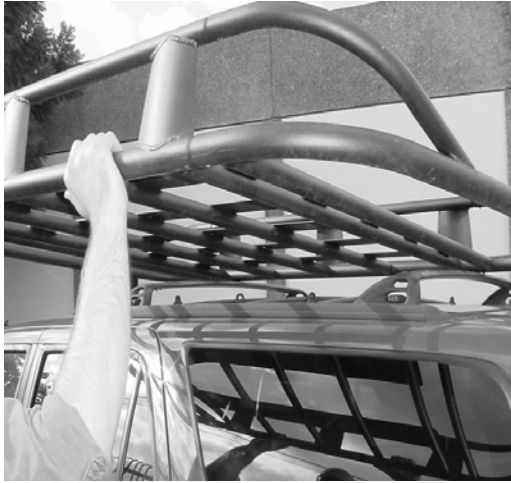
For Technical Support/Warranty Information please call 310-762-9944



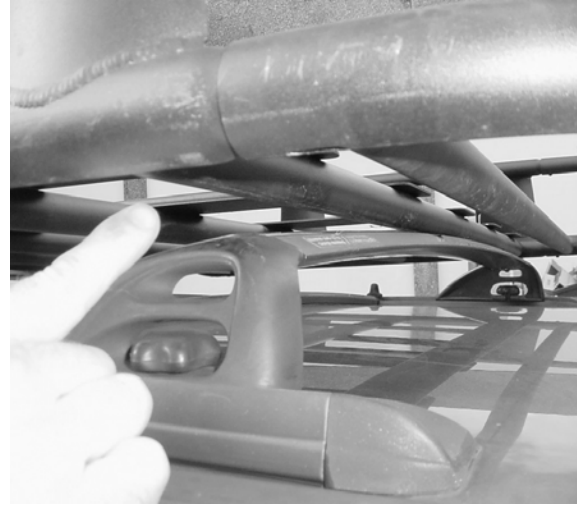
Installation Instructions

Rugged Rack

Part # 17185

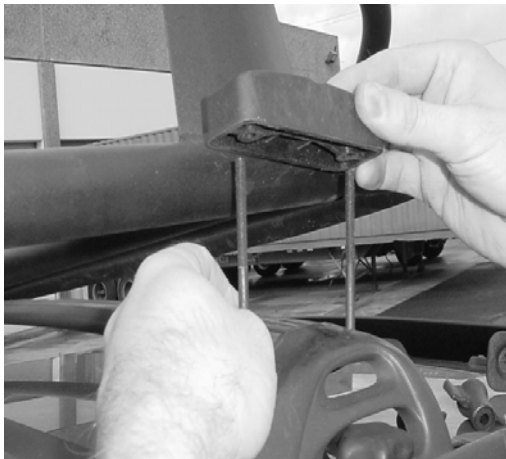


(Figure 1)



(Figure 2)

Step 3: Place the lower cross bar bracket under the vehicle roof rack cross rail. Push the lower bracket through the holes in the center cross bar bracket. (Figure 3, 4)



(Figure 3)



(Figure 4)

Step 4: Place the upper cross bar bracket over the Racks cross member and push down onto the lower cross bar bracket. (Figure 5)

For Technical Support/Warranty Information please call 310-762-9944

Smittybilt, 1600 Walnut Parkway, Rancho Dominguez, CA 90220



Installation Instructions

Rugged Rack

Part # 17185



Upper cross bar bracket

Center cross bar bracket

Lower cross bar bracket

(Figure 5)

Step 5: Secure the Rack to the vehicle with the supplied wing nuts. (Figure 6,7)



(Figure 6)



(Figure 7)

Step 6: Make sure all hardware is tight. Installation is now complete.

NOTE: To protect your investment, wax this product after installing. Regular waxing is recommended. Do not use any type of polish/wax that contains abrasives that could damage the finish.

For Technical Support/Warranty Information please call 310-762-9944

Smittybilt, 1600 Walnut Parkway, Rancho Dominguez, CA 90220



Installation Instructions

Rugged Rack

Part # 17185

LIMITED WARRANTY

Smittybilt (The Company) warrants to the original purchaser of this product that should the product or any part thereof, under normal use and conditions, be proven defective in material or workmanship within the warranty period of 3 years from the date of purchase, such defect(s) will be repaired or replaced (At the Company's option) without charge for parts or labor. To obtain repair or replacement within the terms of the warranty, the product is to be delivered with proof of warranty coverage (e.g. dated bill of sale, receipt), specification of defect, freight pre-paid with Returns Good Authorization Number from Smittybilt to place of purchase or to Smittybilt. Items returned to Smittybilt Automotive without an Returns Authorization Number will be refused and returned to sender at the senders expense.

This warranty does not apply to any product or part thereof which, in the opinion of the Company, has suffered or been damaged through altercation, improper installation, mishandling, misuse, neglect accident or acts of nature. **THE EXTENT OF THE COMPANY'S LIABILITY UNDER THIS WARRANTY IS LIMITED TO THE REPAIR OR REPLACEMENT PROVIDED ABOVE AND, IN NO EVENT, SHALL THE COMPANY'S LIABILITY EXCEED THE PURCHASE PRICE PAID BY THE PURCHASER FOR THIS PRODUCT.**

This warranty is in lieu of all expressed warranties and liabilities. ANY IMPLIED WARRANTIES, INCLUDING ANY IMPLIED WARRANTY OF MERCHANTABILITY SHALL BE LIMITED TO THE DURATION OF THIS WRITTEN WARRANTY. ANY ACTION FOR BREACH OF ANY WARRANTY HEREUNDER INCLUDING ANY IMPLIED WARRANTY OF MERCHANTABILITY MUST BE BROUGHT WITHIN A PERIOD OF 90 DAYS FROM DATE OF ORIGINAL PURCHASE. IN NO CASE SHALL THE COMPANY BE LIABLE FOR ANY CONSEQUENTIAL OR INCIDENTAL DAMAGES FOR BREACH OF THIS OR ANY OTHER WARRANTY, EXPRESSED OR IMPLIED, WHATSOEVER. No person or representative is authorized to assume for the company any liability other than expressed herein in connection with the sale of this product. Some states do not allow limitations on how long an implied warranty lasts or the exclusion or limitation of incidental or consequential damage, therefore above limitations may not apply to you. This warranty gives the purchaser specific legal rights. The purchaser may have additional rights, which vary from state to state.

Some states do not allow limitations on how long an implied warranty lasts or the exclusion or limitation of incidental or consequential damage, therefore above limitations may not apply to you. This warranty gives the purchaser specific legal rights. The purchaser may have additional rights, which vary from state to state.

For Technical Support/Warranty Information please call 310-762-9944

Smittybilt, 1600 Walnut Parkway, Rancho Dominguez, CA 90220