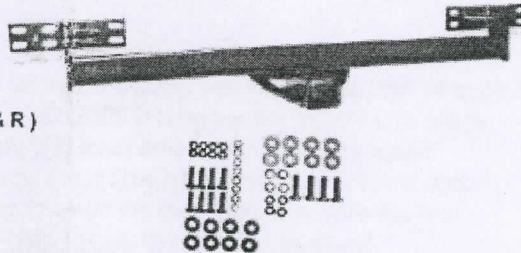


# Rugged Ridge™ Installation Instructions

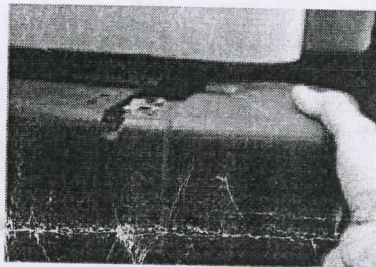
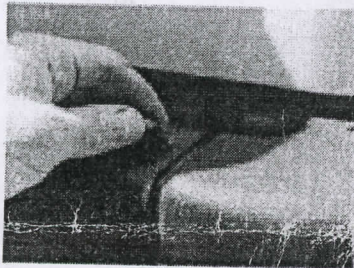
## Rear 2" receiver hitch 1987-2006 Wranglers

- Parts List:**
- (1) Rear Hitch
  - (8) 10mm Nuts
  - (4) 12mm Bolts
  - (4) 12 mm Lock Washers
  - (2) Rear mounting Brackets ( L & R )
  - (16) 10mm Flat Washers
  - (8) 12mm Flat Washers
  - (8) 10mm Bolts
  - (8) 10mm Lock Washers
  - (4) 12mm Nuts

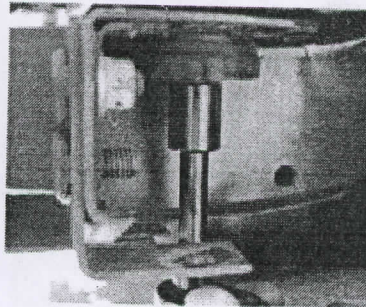
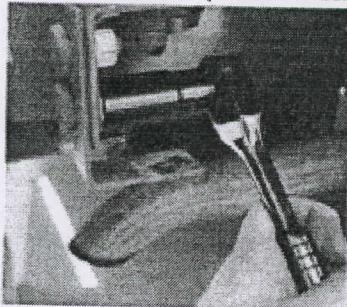


**Installation:**

- Step (1)** Remove factory rear bumper and brackets. For the 97-2006 Wrangler the plastic side guards will need to be removed.



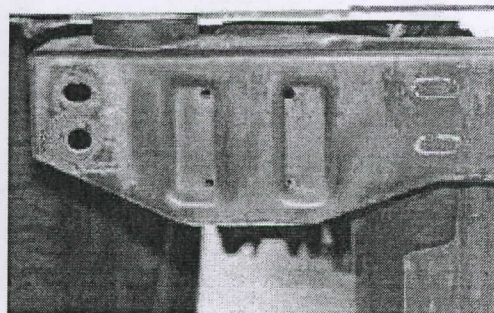
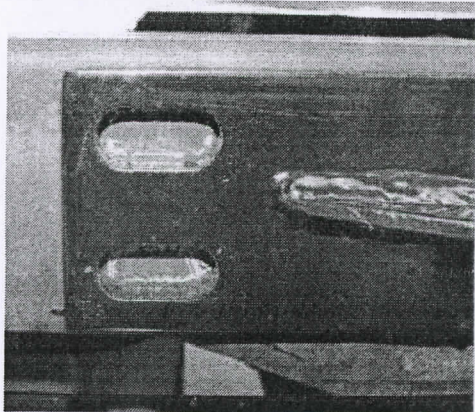
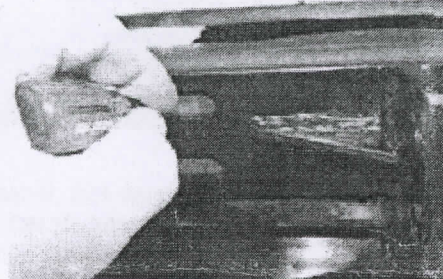
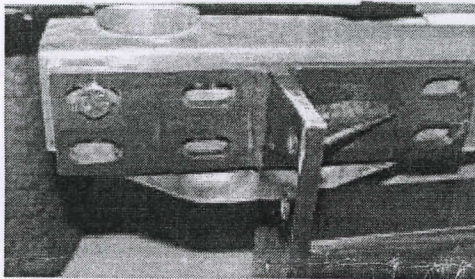
For some 97-2006 Wranglers the rear body mount and bolt may need to be removed to gain access to the top inside rear bumper bolt.





# Rugged Ridge™

- Step (2)** Place the hitch mounting brackets as shown in images below. For 1987-95 Wranglers the holes in the frame will line up. On 1997-2006 Wranglers the outer holes will be located to the outer mounting holes and the inner holes will need to be drilled. For 97 and newer Wranglers temporarily mount the hitch into place. With a scribe or small screwdriver mark the inner holes through the mounting face onto the rear cross member. A second person to help locate the hitch is advised.

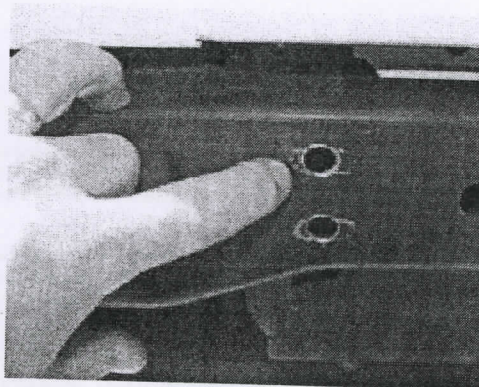
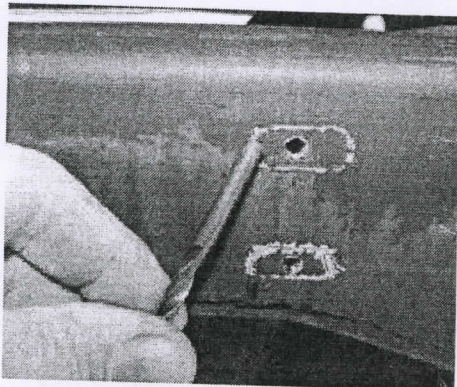


- Step (3)** Drill holes into rear cross member. WARNING ... BE VERY CAREFUL WHEN DRILLING MOUNTING HOLES. THE FUEL TANK IS LOCATED JUST BEHIND THE CROSS MEMBER. Great care will be needed to avoid puncturing the fuel tank. Use a small 3/16" drill bit for a starter hole. After the small holes have been drilled, enlarge them with a 1/2" drill bit. **BE VERY CAREFUL TO AVOID HITTING THE FUEL TANK WHEN DRILLING.**

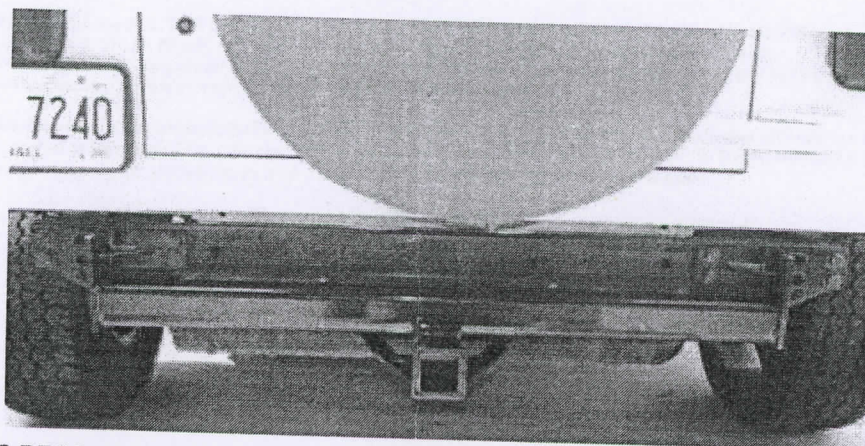


# Rugged Ridge™

Step (3) continued.



Attach the hitch with the (4) 10mm bolts, flat washer, lock washer and nuts supplied for each side. Tighten to 45lbs (Total of 8). **NOTE: ON 97-2006 Wranglers there might be a tight fit between the rear cross member and the fuel tank. A second person will help with installation.**



**WARNING: IT IS RECOMMENDED NOT TO EXCEED ANY TONGUE WEIGHT IN EXCESS OF 200LBS**

# **Rugged Ridge** ™

## **LIMITED 90 DAY WARRANTY**

Applies to Rugged Ridge by Onix-ada Inc. Products

Rugged Ridge Off Road (the Company) warrants to the original purchaser of this product that should the product or any part thereof, under normal use and conditions, be proven defective in material or workmanship within 90 DAYS from the date of original purchase, such defect(s) will be repaired or replaced or credited at the Company's sole option.

To obtain repair or replacement within the terms of this Warranty, the product is to be delivered with proof of warranty coverage (e.g. Dated bill of sale), specification of defect(s) to the place of purchase or, with prior approval from the Company (Return Authorization Number s required), freight pre-paid to the Company address listed below.

This warranty does not apply to any product or part thereof which, in the opinion of the Company, has suffered or been damaged through alteration, improper installation, mishandling, misuse, neglect, accident or by acts of nature. THE EXTENT OF THE COMPANY'S LIABILITY UNDER THIS WARRANTY IS LIMITED TO THE REPAIR OR REPLACEMENT PROVIDED ABOVE AND IN NO EVENT, SHALL THE COMPANY'S LIABILITY EXCEED THE PURCHASE PRICE PAID BY PURCHASER FOR THE PRODUCT.

This Warranty is in lieu of all express warranties or liabilities. ANY IMPLIED WARRANTIES, INCLUDING ANY IMPLIED WARRANTY OF MERCHANTABILITY, SHALL BE LIMITED TO THE DURATION OF THIS WRITTEN WARRANTY. ANY ACTION FOR BREACH OF ANY WARRANTY HEREUNDER INCLUDING ANY IMPLIED WARRANTY OF MERCHANTABILITY MUST BE BROUGHT WITHIN THE PERIOD OF 90 DAYS FROM DATE OF ORIGINAL PURCHASE.

IN NO CASE SHALL THE COMPANY BE LIABLE FOR ANY CONSEQUENTIAL OR INCIDENTAL DAMAGES FOR BREACH OF THIS OR ANY OTHER WARRANTY, EXPRESS OR IMPLIED, WHATSOEVER. No person or representative is authorized to assume for the Company any liability other than expressed herein in connection with the sale of this product.

Some States do not allow limitations on how long an implied warranty lasts or the exclusion or limitation of incidental or consequential damage, so the above limitations may not apply to you. This warranty gives you specific legal rights and you may also have other rights, which vary from state to state.

Onix-ada Inc.  
460 Horizon Dr. Suite 400  
Suwanee, Georgia 30024